

POS	QTY	PART NUMBER	DESCRIPTION
1	1	NLT50L	TANK 50L 1.6 MPa CE
2	1	VBA43A-F04	BOOSTER REGULATOR
3	1	AF40-F04-R-A	AIR FILTER
4	1	AR40-F04-X425	REGULATOR
5	1	ANA1-04	SILENCER HIGH NOISE
6	1	K8-10-40	PRESSURE GAUGE 0-10 BAR
7	1	K4-16-50	PRESSURE GAUGE 0-16 BAR
8	1	WNH-04-04	FITTING
9	1	WNH-12M0-04	SELF-ALIGN FITTING
10	1	WNL-12M0-04	SELF-ALIGN FITTING
11	2	WNL-04-F04V	FITTING
12	1	WNH-04-F01V	FITTING
13	1	WNT-04-F04V-04	FITTING

AIR SUPPLY G1/2"
PRESSURE RANGE 0.1 TO 1 MPa

OUT G1/2"

DRAIN VALVE G3/8"

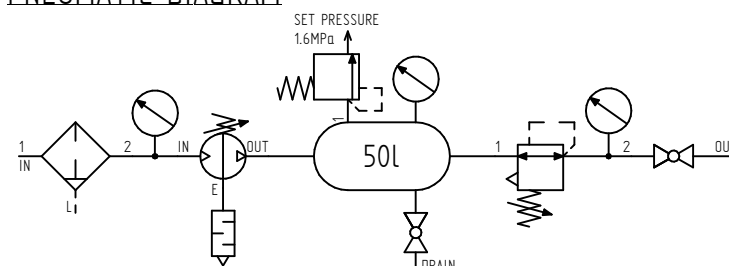
Ø 15 (4x)
FOR MOUNTING


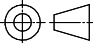
NOTES

1) FOR UNDISPLAYED DIMENSIONS AND SPECIFICATIONS PLEASE REFER TO PRODUCT CATALOGUE.

2) UNLESS OTHERWISE NOTED ALONG WITH A SEPARATE CONTRACT OR AGREEMENT WITHIN THE PRODUCT DELIVERY SPECIFICATIONS, THE SAFETY INSTRUCTIONS SPECIFIED IN THE PRODUCT CATALOGUE ARE APPLIED. PLEASE CONTACT SMC PNEUMATICS BV FOR FURTHER DETAILS.

PNEUMATIC DIAGRAM



 SMC PNEUMATICS BV DE RUYTERKADE 120 1011AB AMSTERDAM									
		THIRD ANGLE							
		SIZE: A3							
ALL DIMS IN MM		REV	CHANGE NOTE		MODIFICATION			NAME	DATE
MATERIAL / FINISH		DRAWN	LIESHOUT		PRODUCT PART NUMBER VBA43A-SDU11615				
DATE		12-9-2016		DESCRIPTION TANK BOOSTER COMBINATION 1.6MPa 50dm³					
MATERIAL:		DESIGNED LIESHOUT							
DATE		12-9-2016							
FINISH:		CHECKED BOSMAN		TRACKING NUMBER			SCALE 1:8		
DATE		20-9-2016		SDU11615					
TREATMENT		APPROVED BOSMAN		DOCUMENT NUMBER			REVISION		
DATE		20-9-2016		VBA43A-SDU11615			SHEET 1 / 1		
© THE REPRODUCTION, DISTRIBUTION AND UTILIZATION OF THIS DOCUMENT AS WELL AS THE COMMUNICATION OF ITS CONTENTS TO OTHERS WITHOUT THE WRITTEN AUTHORIZATION OF SMC IS PROHIBITED. PENALTIES WILL BE IMPOSED FOR THE PAYMENT OF DAMAGES. ALL RIGHTS RESERVED.									

THE REPRODUCTION, DISTRIBUTION AND UTILIZATION OF THIS DOCUMENT AS WELL AS THE COMMUNICATION OF ITS CONTENTS TO OTHERS WITHOUT THE WRITTEN AUTHORIZATION OF SMC IS PROHIBITED. OFFENDERS WILL BE HELD LIABLE FOR THE PAYMENT OF DAMAGES. ALL RIGHTS RESERVED.