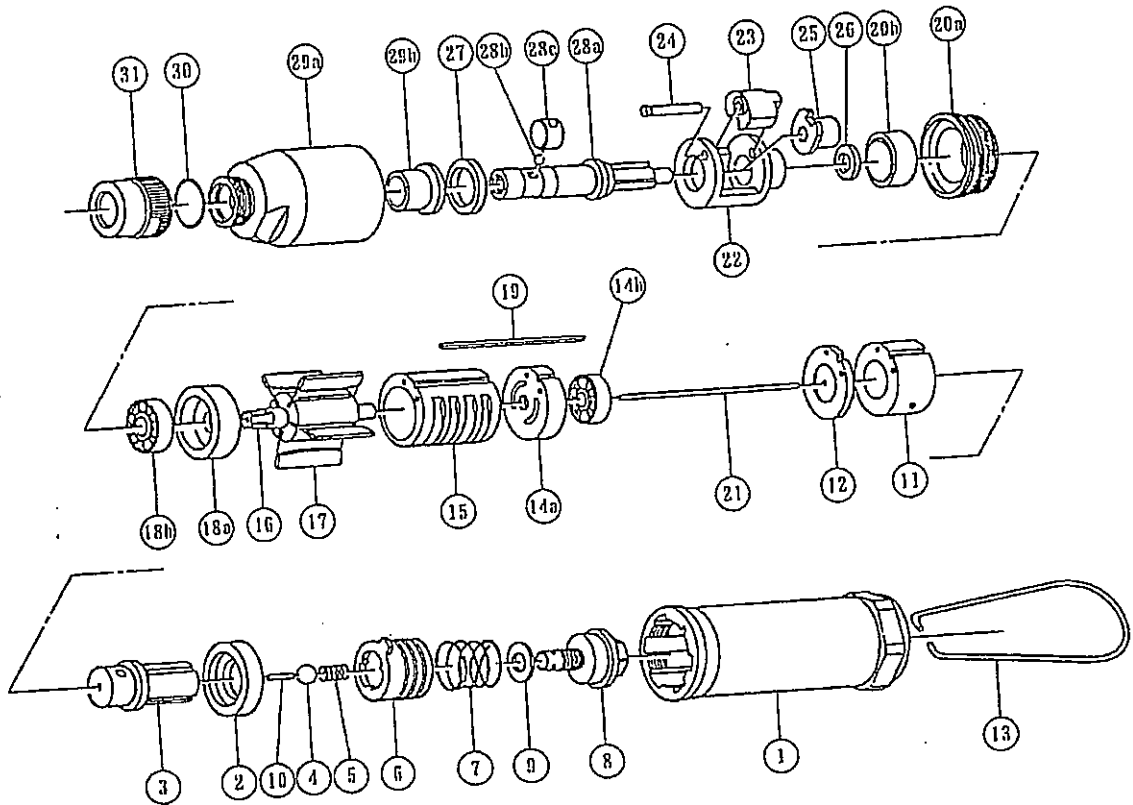


DRIVER

| MODEL (YESNo.) | TOOL No.        |
|----------------|-----------------|
| YD-5A (05)     | 2044 0000 05 00 |





# YOKOTA EUROPA BV

[e-mail: info@impulsetools.com](mailto:info@impulsetools.com)   
 <http://www.impulsetools.com>  
 P.O. BOX 392 NL-1000 AJ AMSTERDAM PHONE: 020-625 29 53 FAX: 020-625 35 69  
 Hydraulic Impulse Wrenches, Impact Wrenches, Drills, Grinders, Screw drivers, Chippers, Scales, Pumps.

■ PARTS LIST

| No. | Name of Parts         | Per set | Parts No.       | No.                  | Name of Parts            | Per set | Parts No.       |
|-----|-----------------------|---------|-----------------|----------------------|--------------------------|---------|-----------------|
| 1   | Motor Case            | 1       | 2004 0011 01 00 | 20                   | Motor Case Joint Assy.   | 1 set   | 2004 0015 01 99 |
| 2   | Reverse Washer        | 1       | 2004 0043 00 00 |                      | a)Motor Case Joint       | 1       | 2004 0015 01 00 |
| 3   | Reverse Valve         | 1       | 2004 0005 00 00 |                      | b)Needle Bearing TLA1612 | 1       | 9120 0022 00 00 |
| 4   | Ball M8 S             | 1       | 9150 1009 00 00 | 21                   | Rod                      | 1       | 2044 1368 00 00 |
| 5   | Spring 6X12           | 1       | 8020 1037 00 00 | 22                   | Hammer Frame             | 1       | 2004 0402 00 00 |
| 6   | Reverse Lever         | 1       | 2004 0007 00 00 | 23                   | Hammer                   | 1       | 2004 0403 01 00 |
| 7   | Spring 20X28          | 1       | 8020 1108 00 00 | 24                   | Hammer Pin               | 1       | 2004 0404 00 00 |
| 8   | Hose Joint            | 1       | 2004 0113 00 00 | 25                   | Driver                   | 1       | 2004 0405 00 00 |
| 9   | Fa-Packing 8X16X0.2   | 1       | 8010 3003 00 00 | 26                   | Upper Washer             | 1       | 2004 0407 00 00 |
| 10  | AF Pin 3X15           | 1       | 8051 2006 00 00 | 27                   | Washer 17X21X5           | 1       | 8040 2019 00 00 |
| 11  | Reverse Guide Bushing | 1       | 2004 0042 01 00 | 28                   | Anvil Assy.              | 1 set   | 2044 0410 00 99 |
| 12  | Roller Washer         | 1       | 2004 0044 01 00 |                      | a)Anvil                  | 1       | 2044 0410 00 61 |
| 13  | Hanger                | 1       | 0004 0017 00 00 |                      | b)Ball M4 S              | 1       | 9150 1005 00 00 |
| 14  | Upper Plate Assy.     | 1 set   | 2006 0303 00 99 | 29                   | c)Band                   | 1       | 2032 0415 00 00 |
|     | a)Upper Plate         | 1       | 2006 0303 00 00 |                      | Hammer Case Assy.        | 1 set   | 2004 0401 00 99 |
|     | b)Ball Bearing 626    | 1       | 9100 1007 00 00 |                      | a)Hammer Case            | 1       | 2004 0401 00 00 |
| 15  | Cylinder              | 1       | 2004 0304 01 00 | 30                   | b)Anvil Bushing          | 1       | 2001 0409 00 00 |
| 16  | Rotor                 | 1       | 2004 0305 01 00 |                      | O-Ring P16               | 1       | 9010 1015 00 00 |
| 17  | Vane                  | 6       | 2004 0306 00 00 | 31                   | Main Shaft Cover         | 1       | 2001 0690 01 00 |
| 18  | Lower Plate Assy.     | 1 set   | 2004 0307 00 99 | Standard Accessories |                          |         |                 |
|     | a)Lower Plate         | 1       | 2004 0307 00 00 |                      | Regulator 1/8X1/8        | 1       | 8130 1001 00 00 |
|     | b)Ball Bearing 608    | 1       | 9100 1004 00 00 |                      | Touch Joint 1/8          | 1       | 9690 0004 00 00 |
| 19  | Key 3.5X2.8X62        | 1       | 8060 1024 00 00 |                      |                          |         |                 |