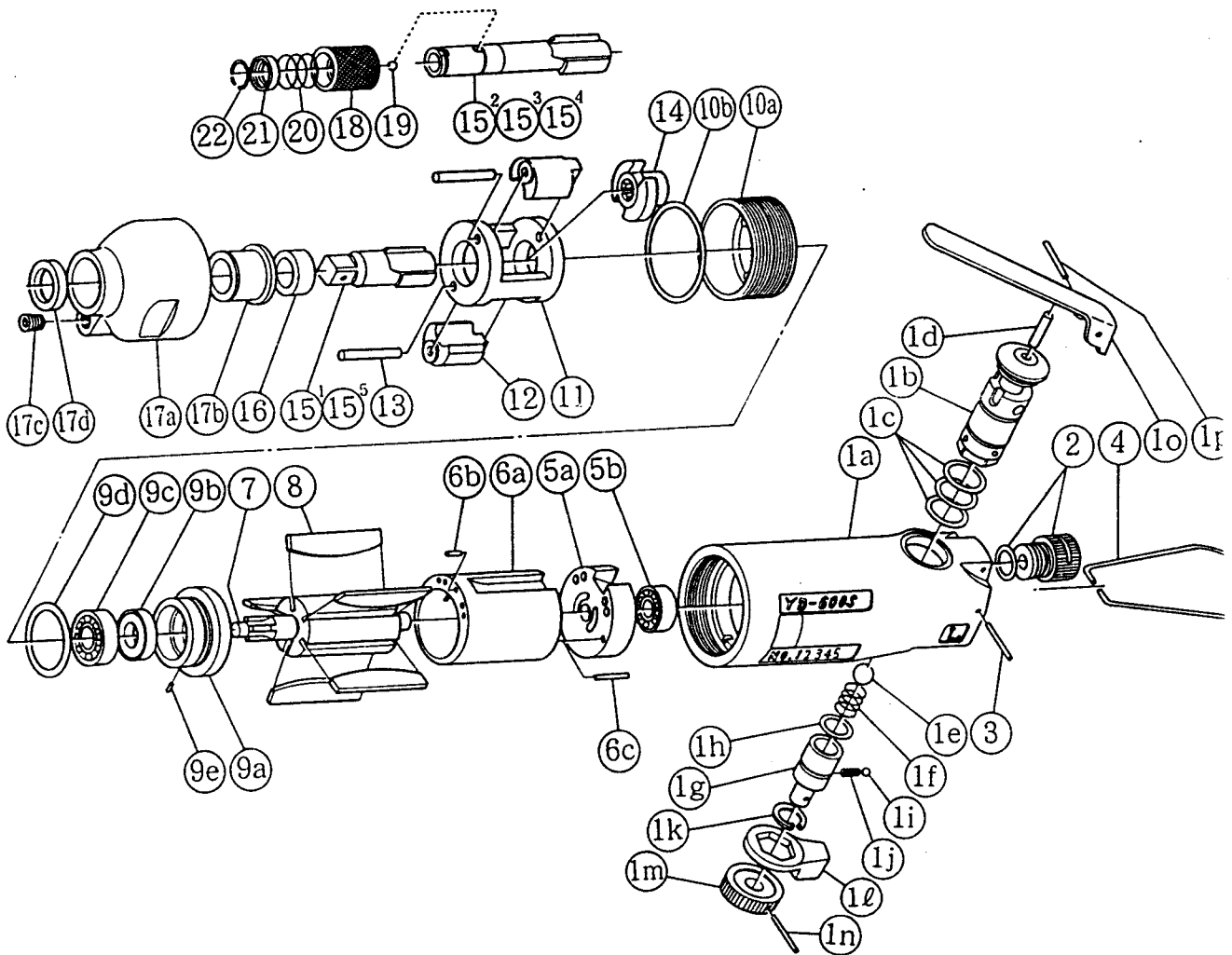




SCREW DRIVERS

MODELS (YES.NO.)	TOOL NO.
YD - 600SW (00)	2323 0000 00 00
YD - 600SZ (00)	2323 0000 00 01
YD - 600SBZ (00)	2323 0000 00 02

EXPLODED VIEW





SCREW DRIVERS

MODELS (YES.NO.)	TOOL NO.
YD - 600SW (00)	2323 0000 00 00
YD - 600SZ (00)	2323 0000 00 01
YD - 600SBZ (00)	2323 0000 00 02

■ PARTS LIST

No.	Name of Parts	Per Set	Parts No.	No.	Name of Parts	Per Set	Parts No.	
1	Motor Case Assy.	1set	2323 0011 00 99	9	Lower Plate Assy.	1set	2308 0307 01 99	
	(a) Motor Case	1	2323 0011 00 00		(a) Lower Plate	1	2308 0307 01 00	
	Reverse Valve Assy.	1	2323 0005 00 99		(b) Oil Seal (KB10204.5)	1	9030 2001 00 00	
	(b) Reverse Valve	1	* ↑		(c) Ball Bearing (# 6900)	1	9100 1046 00 00	
	(c) "O"Ring (N14)	3	9010 4007 00 00		(d) "O"Ring (P22)	1	9010 1019 00 00	
	(d) Pin (4 × 21.8)	1	8051 3057 00 00	(e) Pin (2.5 × 5)	1	8051 1071 00 00		
	(e) Ball (3/8)	1	9150 4005 00 00	10	Lower Plate Spacer Assy.	1set	2324 0311 00 99	
	(f) Spring (9.2 × 16)	1	8020 1076 00 00		(a) Lower Plate Spacer	1	2324 0311 00 00	
	Regulator Valve Assy.	1set	2015 0202 01 99	(b) "O"Ring (N38)	1	9010 4016 00 00		
	(g) Regulator Valve	1	* ↑	11	Hammer Frame	1	2315 0402 00 00	
	(h) "O"Ring (N10)	1	9010 4004 00 00	12	Hammer	2	2315 0403 00 00	
	(i) Ball (1/8)	1	9150 3009 00 00	13	Hammer Pin	2	2096 0404 00 00	
	(j) Spring (3 × 10)	1	8020 1004 00 00	14	Driver	1	2315 0405 00 00	
	(k) Snap Ring (IRTW - 13)	1	9040 3003 00 00	15 ¹	Anvil for YD - 600SW	1	2315 0410 00 41	
	(l) Reverse Lever	1	2015 0007 00 00	15 ²	Anvil for YD - 600SZ	1	2308 0410 00 73	
	(m) Regulator Lever	1	2015 0203 01 00	15 ³	Anvil for YD - 600SBZ	1	2308 0410 00 72	
	(n) Spring Roll Pin (2 × 20)	1	9250 1021 00 00	16	Hammer Frame Bushing	1	2096 0406 00 00	
	(o) Throttle Lever	1	0931 0110 00 00		17	Hammer Case Assy.	1set	2324 0401 00 99
	(p) Spring Roll Pin (3 × 25)	1	9250 5001 00 00			(a) Hammer Case	1	2324 0401 00 00
2	Silencer Assy.	1set	2323 0053 00 99			(b) Anvil Bushing	1	2308 0409 00 00
3	Spring Roll Pin (3 × 22)	1	9250 1054 00 00	(c) Oil Plug (NPTF1/16)		1	8210 4001 00 00	
4	Hanger	1	0004 0017 00 00	(d) Oil Seal (OS13193)	1	9030 3006 00 00		
5	Upper Plate Assy.	1set	2308 0303 00 99	YD - 600SZ & 600SBZ				
	(a) Upper Plate	1	2308 0303 00 00	18	Bit Chuck	1	2057 0414 00 00	
	(b) Ball Bearing (# 697)	1	9100 1060 00 00	19	Ball (1/8)	1	9150 3009 00 00	
6	Cylinder Assy.	1set	2323 0304 00 99	20	Spring (13.5 × 11.2)	1	8020 1137 00 00	
	(a) Cylinder	1	* ↑	21	Spring Washer	1	2057 0419 00 00	
	(b) Spring Roll Pin (2.5 × 6)	1	9250 1030 00 00	22	Retaining Ring (10 × 1)	1	8030 1009 00 00	
	(c) Spring Roll Pin (2 × 12)	1	9250 1015 00 00					
7	Rotor	1	2308 0305 01 00					
8	Vane	5	2096 0306 00 00					

The part marked "*" can not be supplied individually. So please order it as a unit of assembly shown by arrow mark (↑).