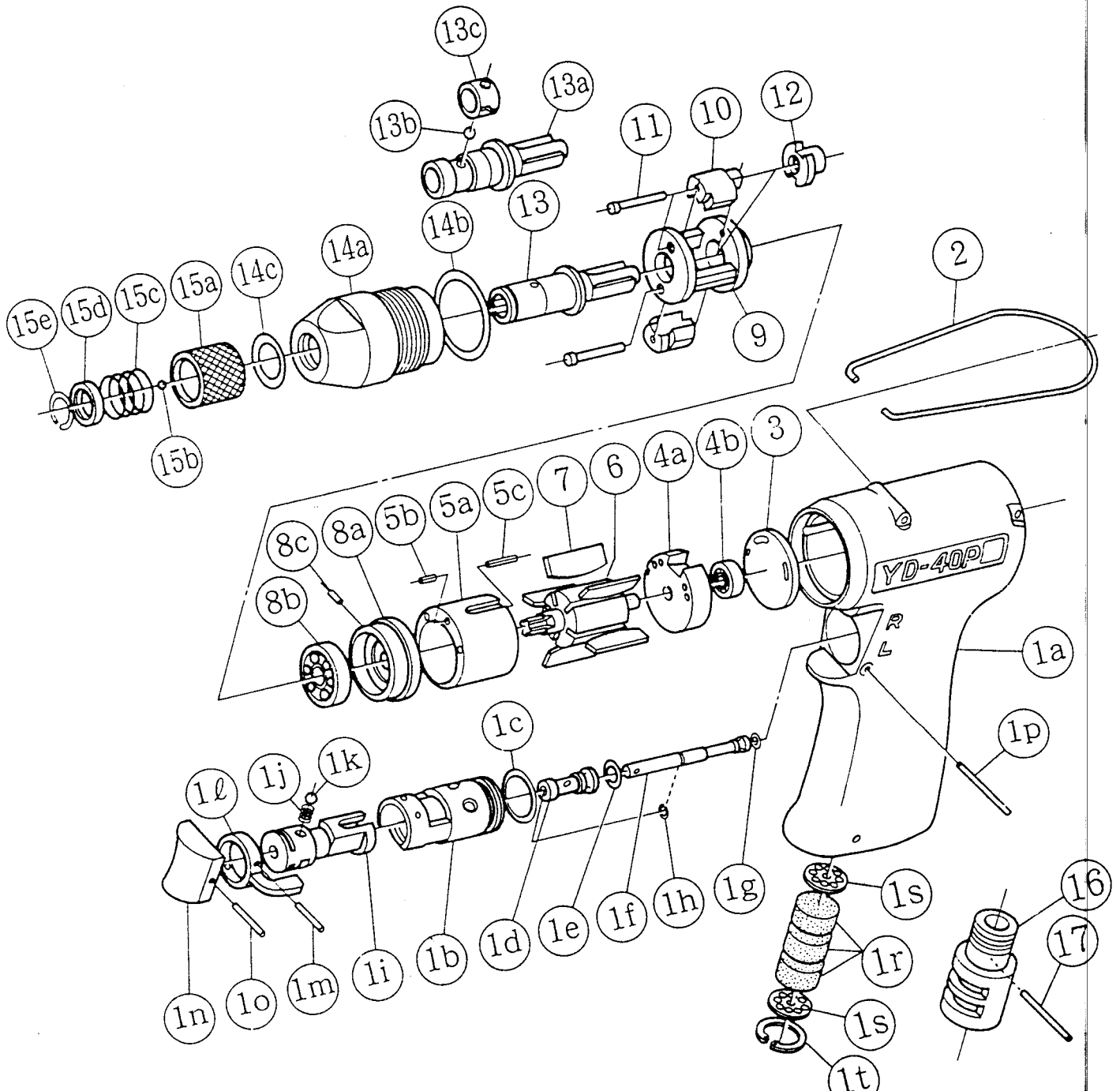


## SCREW DRIVERS

MODELS (YES. NO.)	TOOL NO.
YD - 40PA (00)	2316 0000 00 09
YD - 40PB (00)	2316 0000 00 10
YD - 40PZ (00)	2316 0000 00 01
YD - 40PBZ (00)	2316 0000 00 02

### EXPLODED VIEW



# YOKOTA EUROPA BV

P.O. BOX 392 NL - 1000 AJ AMSTERDAM PHONE 020 - 625 29 53 FAX 020 - 625 35 69

Hydraulic Impulse Wrenches, Impact Wrenches, Drills, Grinders, Screwdrivers, Chippers, Scalars, Pumps.

## SCREW DRIVERS

MODELS (YES. NO.)	TOOL NO.
YD - 40PA (00)	2316 0000 00 09
YD - 40PB (00)	2316 0000 00 10
YD - 40PZ (00)	2316 0000 00 01
YD - 40PBZ (00)	2316 0000 00 02

### ■ PARTS LIST

No.	Name of Parts	Par Set	Parts No.	No.	Name of Parts	Par Set	Parts No.
1	Motor Case Assy.	1set	2316 0011 00 99	7	Vane	5	2058 0306 00 00
	(a) Motor Case	1	2316 0011 00 00	8	Lower Plate Assy.	1set	2023 0307 00 99
	Throttle Bushing Assy.	1set	2315 0104 00 99		(a) Lower Plate	1	2023 0307 00 00
	(b) Throttle Bushing	1	* ↑		(b) Ball Bearing (# EE - 2)	1	9100 6001 00 00
	(c) "O"Ring (N15)	1	9010 4008 00 00		(c) Spring Roll Pin (2 × 5)	1	9250 1010 00 00
	Throttle Rod Bushing Assy.	1set	0117 0105 00 99	9	Hammer Frame	1	2316 0402 00 00
	(d) Throttle Rod Bushing	1	* ↑	10	Hammer	2	2003 0403 01 00
	(e) "O"Ring (No.3)	1	9010 3003 00 00	11	Hammer Pin	2	2003 0404 00 00
	Throttle Rod Assy.	1set	0229 0106 00 99	12	Driver	1	2316 0405 00 00
	(f) Throttle Rod	1	* ↑	13 <sup>1</sup>	Anvil Assy. YD - 40PA	1set	2316 0410 00 99
	(g) "O"Ring (N2)	1	9010 4001 00 00		(a) Anvil	1	2316 0410 00 61
	(h) Snap Ring (ETW - 2.8)	1	9040 5008 00 00		(b) Ball (M4)	1	9150 1005 00 00
	(i) Reverse Valve	1	2315 0005 00 00		(c) Band	1	2032 0415 00 00
	(j) Spring (3 × 4)	1	8020 1246 00 00	13 <sup>2</sup>	Anvil Assy. YD - 40PB	1set	2316 0410 01 99
	(k) Ball (1/8)	1	9150 3009 00 00		(a) Anvil	1	2316 0410 00 62
	(l) Reverse Lever	1	2315 0007 00 00		(b) Ball (M4)	1	9150 1005 00 00
	(m) Spring Roll Pin (2 × 12)	1	9250 1015 00 00		(c) Band	1	2032 0415 00 00
	(n) Throttle Knob	1	2024 0153 00 00	13 <sup>3</sup>	Anvil YD - 40PZ	1	2316 0410 00 71
	(o) Spring Roll Pin (1.5 × 14)	1	9250 1005 00 00	13 <sup>4</sup>	Anvil YD - 40PBZ	1	2316 0410 00 72
	(p) AA Pin (3 × 23.8)	1	8051 3041 00 00	14	Hammer Case Assy.	1set	2058 0401 00 99
(q) Not Used			(a) Hammer Case		1	2058 0401 00 00	
(r) Silencer Sheet D	3	7211 0032 00 04	(b) "O"Ring (P - 22)		1	9010 1019 00 00	
(s) Silencer Sheet C	2	0035 0032 00 03	(c) "O"Ring (P - 12)		1	9010 1011 00 00	
(t) Snap Ring (RTW - 14)	1	9040 1006 00 00	YD - 40PZ & 40PBZ				
2	Hanger	1	0004 0017 00 00	15	Bit Chuck Assy.	1set	2057 0414 00 99
3	Upper Plate Spacer	1	2316 0301 00 00		(a) Bit Chuck	1	2057 0414 00 00
4	Upper Plate Assy.	1set	2017 0303 00 99		(b) Ball (1/8)	1	9150 3009 00 00
	(a) Upper Plate	1	2017 0303 00 00		(c) Spring (13.5 × 11.2)	1	8020 1137 00 00
	(b) Ball Bearin (# 605)	1	9100 1001 00 00		(d) Spring Washer	1	2057 0419 00 00
5	Cylinder Assy.	1set	2058 0304 00 99		(e) Retaining Ring (10 × 1)	1	8030 1009 00 00
	(a) Cylinder	1	* ↑	Optional Parts			
	(b) FF Pin (1.5 × 16)	1	8055 1026 00 00	16	Silencer Assy.	1set	0081 0053 00 99
	(c) FF Pin (1.5 × 6)	1	8055 1020 00 00	17	Spring Roll Pin (3 × 16)	1	9250 1050 00 00
6	Rotor	1	2058 0305 00 00				

The part marked "\*" can not be supplied individually. So please order it as a unit of assembly shown by arrow mark (↑).



# YOKOTA EUROPA BV

P.O. BOX 392 NL - 1000 AJ AMSTERDAM PHONE 020 - 625 29 53 FAX 020 - 625 35 69

Hydraulic Impulse Wrenches, Impact Wrenches, Drills, Grinders, Screwdrivers, Chippers, Scalers, Pumps.