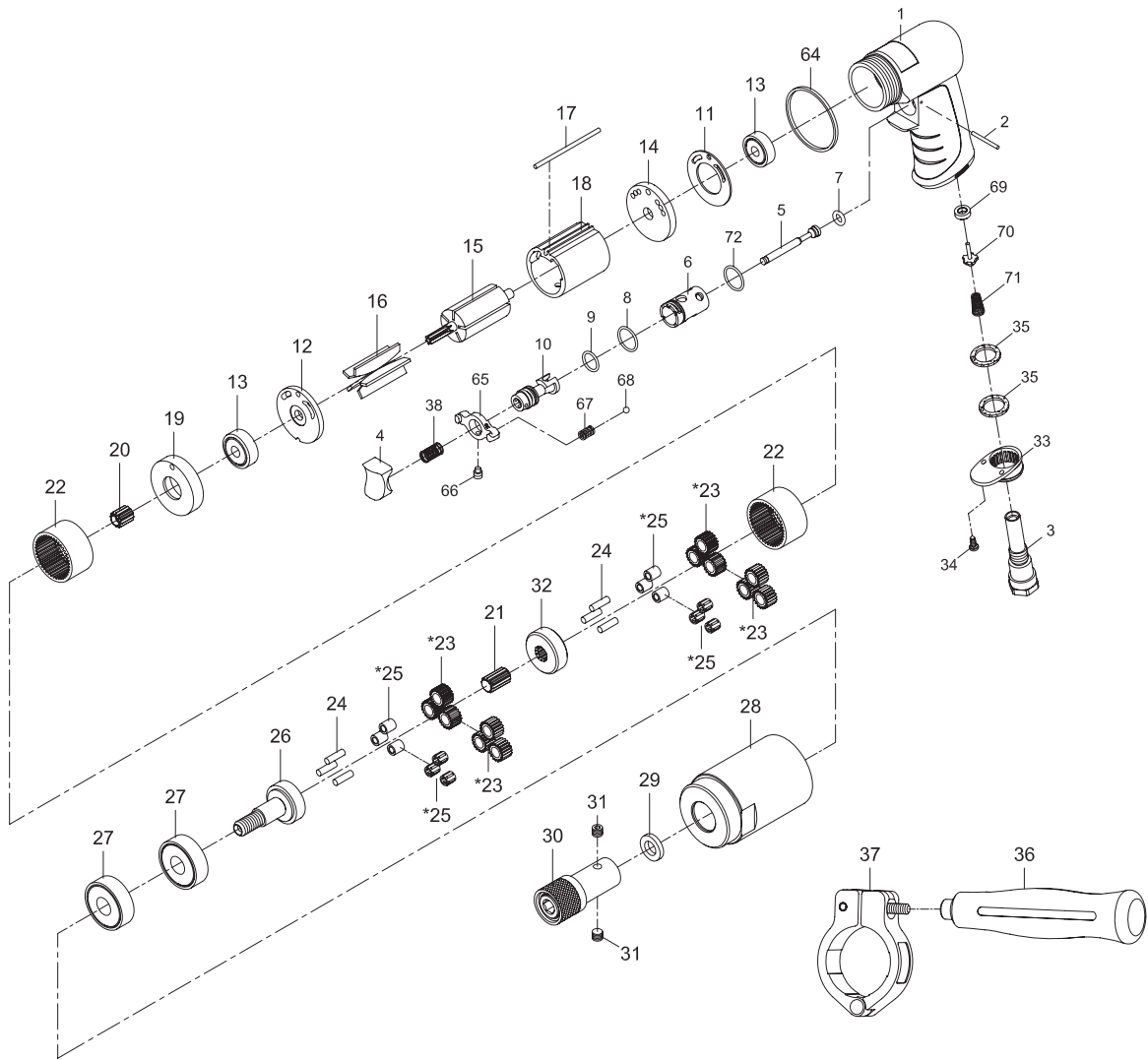


# RR-0800DD SCREWDRIVER



Index No.	Parts No.	Description	Index No.	Parts No.	Description
1	75-7255P01	Motor Housing	*25	70425	Bushing (6)
2	73102	Spring Pin (2x24L)		070428	Needle Bearing (6) (4x6x8)
3	75-725503	Air Inlet	26	70426	Work Spindle
4	75-725304	Trigger	27	080227	Ball Bearing (2) (6201z)
5	75-725505-12	Valve Stem	28	70436	Clamp Nut
6	75-725506	Reverse Bushing	29	70133	Washer
7	70107	O-Ring (4.8x1.9)	30	QC-01SUB	Quick Change Chuck (1/4")
8	795820	O-Ring (15.5x1.5)	31	71946	Set Screw (2) (M5x4)
9	OR01200105	O-Ring (12x1.5)	32	70427	Reduction Spindle
10	74-796210	Reverse Valve	33	70110-21	Exhaust Diffuser
11	80211	Motor Gasket	34	40309	Screw (2) (TS2.9)
12	80214	End Plate	35	75-725350	Damping Material (2)
13	030113	Ball Bearing (2) (626zz)	36	822340	Handle
14	75-725314	Rear End Plate	37	75-725139-0001S	Retainer
15	80215-12	Rotor	38	82208	Valve Spring
16	80216	Rotor Blade (5)	64	75-725351	Decoration Ring
17	75-725317	Pin (2.5x57)	65	75-725521	Reverse Lever
18	80218-22	Cylinder	66	526328	Screw (M4x5)
19	80219	Front End Plate	67	78-728408	Spring
20	70420	Pinion Gear	68	52245	Steel Ball (3/32")
21	70421	Center Gear	69	32-301207	Valve Seat
22	80222	Internal Gear (2)	70	32-301210	Valve
*23	70423-11	Planet Gear (6)	71	32-301208	Spring
	70423-14	Planet Gear (6)	72	72009	O-Ring (15.7x1.7)
24	30124	Pin (6) (4x13.8)			

\* Optional Parts

89-7255P-0001