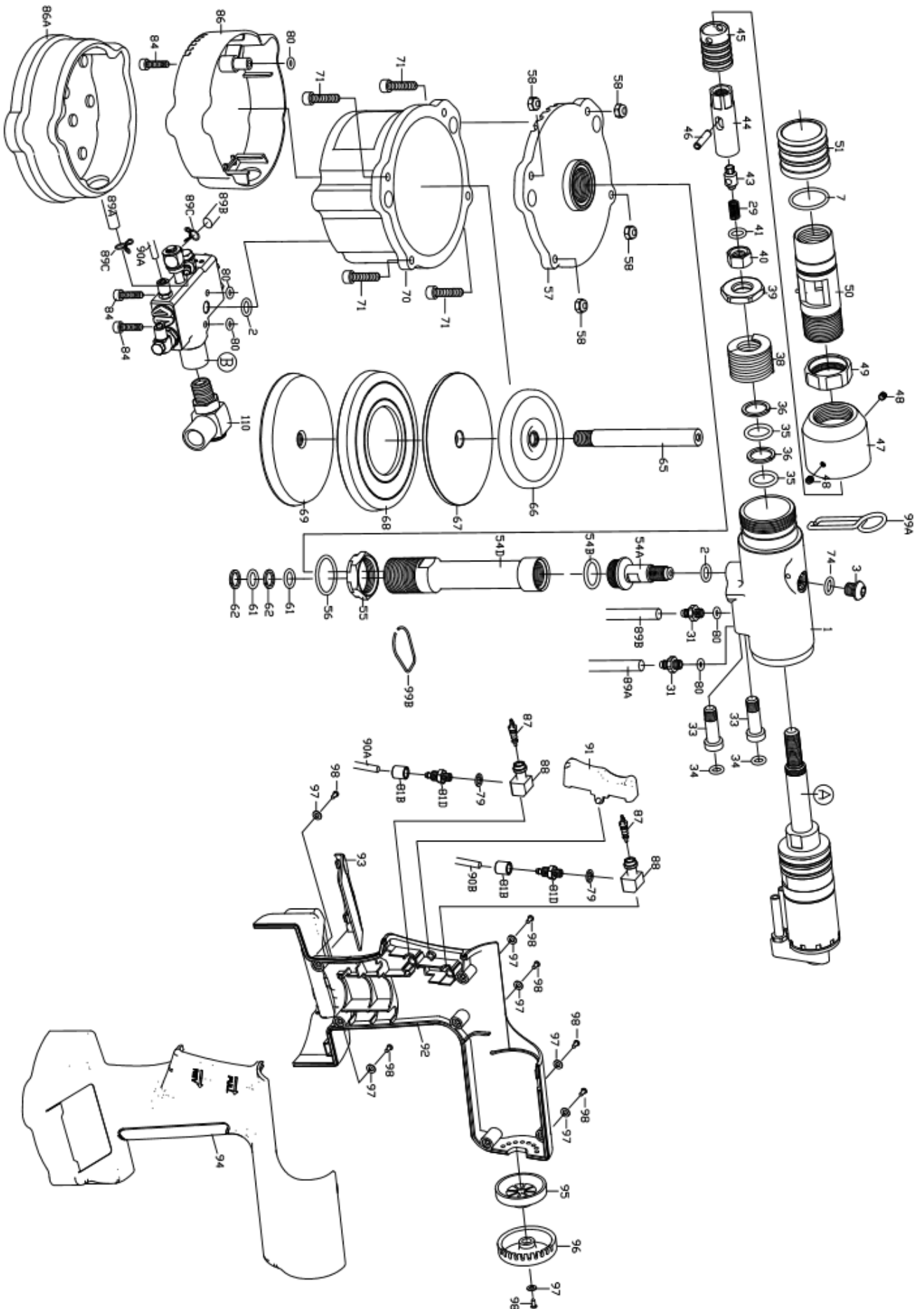


RRI-PRN41612M RIVETER

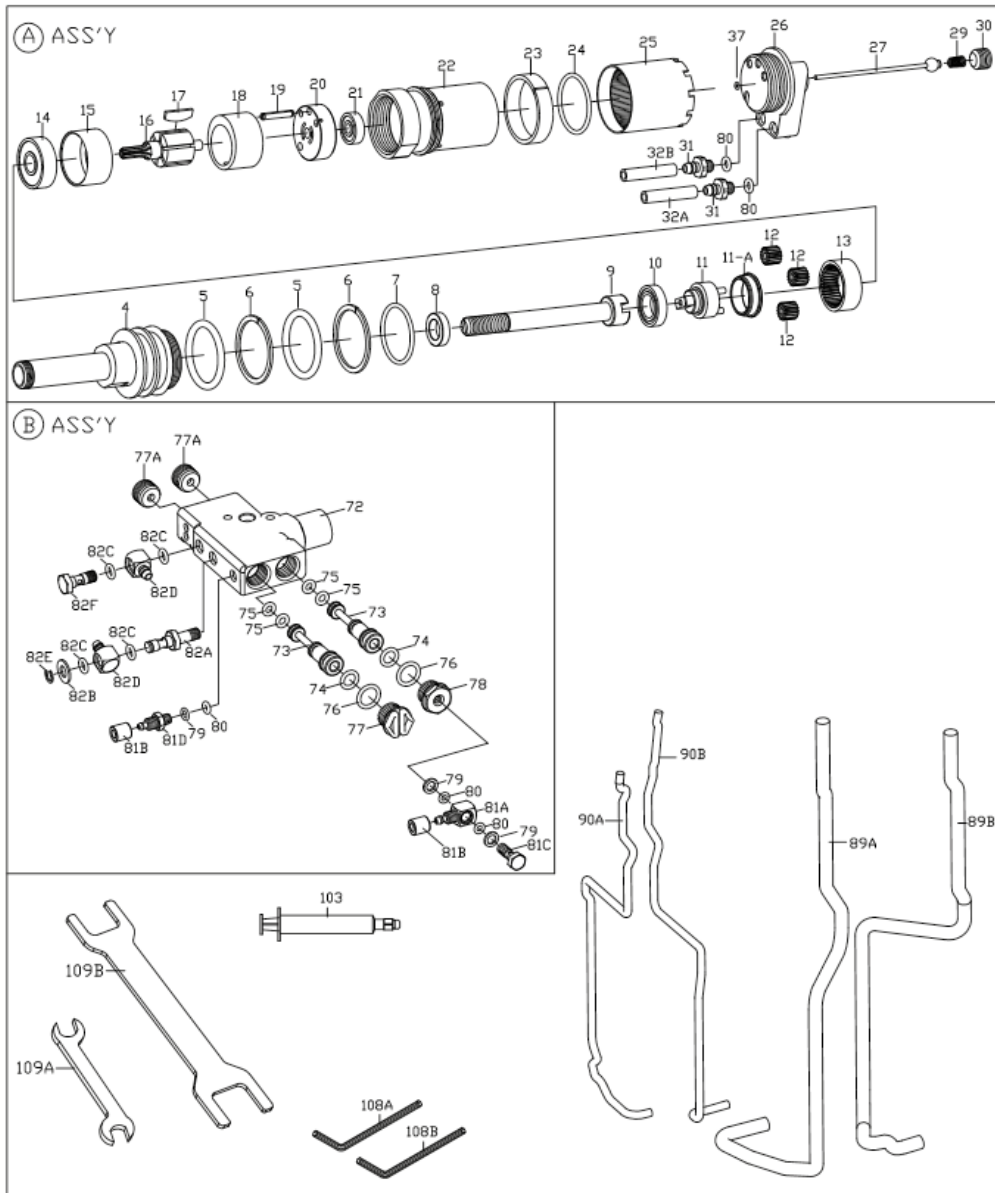
Index no.	Part No.	Description	Q'ty
1	CP258101GW	Hydraulic Section (RAL 7024)	1
2	CPOR0812	O-ring	2
3	CPHR00812508	Set screw	1
4	CP258301	Hydraulic plunger	1
5	CPOR2936	O-ring	2
6	CPBR3036	Back-up ring	2
7	CPOR2225	O-ring	2
8	CP258302	Washer	1
9	CP258303	Shaft	1
10	CPB26801	Ball bearing	1
11	CP2583G3	Gear spindle	1
11-A	CP2583G4	Position guide	1
12	CP2583G2	Gear	3
13	CP2583G1	Ring gear	1
14	CPB20629	Ball bearing	1
15	CP2583M3	Front end plate	1
16	CP2583M4	Rotor	1
17	CP2583M5	Rotor blade	6
18	CP2583M1	Cylinder	1
19	CPRP3030	Pin	1
20	CP2583M2	Rear end plate	1
21	CPB20625	Ball bearing	1
22	CP2583M6	Motor cage	1
23	CP2583M7	Seal	1
24	CPOR2832	O-ring	1
25	CP2583M8	Muffler cap	1
26	CP2583V1	Motor valve body	1
27	CP2583V5A	Ball valve ass'y	1
29	CP318603	Spring	2
30	CPHS01802808	Set screw	1
31	CP258717	Hose connector (4 x 6)	4
32A	CP258702A	4 x 6 PU Hose (reverse)-orange	1
32B	CP258702B	4 x 6 PU Hose (forward)-black	1
33	CP2583V3	Air inlet hose	2
34	CPOR0610	O-ring	2
35	CPOR1419	O-ring	2
36	CPBR1419	Back-up ring	2
37	CPOR0205	O-ring	1
38	CP258309	Spring	1
39	CP258304	Nut	1
40	CP258310	Nut	1
41	CPOR0913	O-ring	1
43	CP258307	Hexagon bit	1
44	CP258306	Bolt bushing	1
45	CP258308	Adjustable bushing	1
46	CPSP4018	Spring	1
47	CP258102	Front cap nut	1
48	CPHS00407004	Set screw	2
49	CP258104	Nut	1
50	CP258103	Front cap	1
51	CP258105	Protection sleeve	1
54A	CP2581082	Hydraulic tube connector-B	1
54B	CPOR1417	O-ring	1
54D	CP1661081	Hydraulic tube connector-A	1
55	CP918106	Nut	1
56	CPOR2025	O-ring	1
57	CP258401GW	Upper cover (RAL 7024)	1
58	CPNN005080B	Nut	4

Index	Part No.	Description	Q'ty
61	CPOR1520	O-ring	2
62	CPBR1520	Back-up ring	2
65	CP166501	Plunger rod	1
66	CP202505	Bumper ring	1
67	CP107503	Front head disc	1
68	CP819502	Packing ring	1
69	CP107502	Lower plate	1
70	CP166403GW	Air cylinder body (RAL 7024)	1
71	CPHC00508020	Set screw	4
72	CP258201	Valve case	1
73	CP919202A	Valve stem	2
74	CPOR0711	O-ring	3
75	CPOR0408	O-ring	4
76	CPOR1014	O-ring	2
77	CP107409	Inlet plug	1
77A	CP922409	Socket screw	1
78	CP258409	Inlet plug	1
79	CP612714	Washer	5
80	CPOR0306	O-ring	10
81A	CP612712	Swivel	1
81B	CP612711	Cap	4
81C	CP612713	Socket	1
81D	CP612717	Socket	3
82A	CP166715	Socket	1
82B	CPPW0613	Washer	1
82C	CPOR0509	O-ring	4
82D	CP166702	Swivel	2
82E	CPES0511	Snap ring	1
82F	CP166705	Socket	1
84	CPHC00407016	Set screw	3
86	CP258402	Base	1
86A	CP922404	Rubber boot	1
87	CP107601	Bleeding valve	2
88	CP107602	Valve body	2
89A	CP166703A	4 x 6 PU hose (reverse)-orange	1
89B	CP166703B	4 x 6 PU hose (forward)-black	1
89C	CP258806	6 mm Hose loop	2
90A	CP166704A	2,5 x 4 PU Hose (reverse)-orange	1
90B	CP166704B	2,5 x 4 PU Hose (pull)-black	1
91	CP258601R	Trigger	1
92	CP258107R	Plastic grip-right	1
93	CP258107C	Battery cap	1
94	CP258107L	Plastic grip-left	1
95	CP919903	Muffler cap holder	1
96	CP919906	Muffler cap	1
97	CPPW0306	Washer	7
98	CPST0310	Screw	7
99A	CP258801	Hanger	1
99B	CP258802	Hose bind	1
103	CP922901	Oiler	1
108A	CP314755	5 mm Hex. wrench	1
108B	CP314934	2 mm Hex. wrench	1
109A	CP144903	10 x 11 Wrench	1
109B	CP258927	27 x 30 Wrench	1
110	CP92L2	Air inlet assembly	1
Ⓐ ASS'Y	1606M-APART	Motor assembly	1
Ⓑ ASS'Y	1606M-BPART	Valve case assembly	1

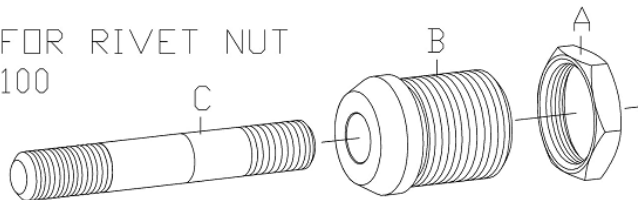
RRI-PR41612M RIVETER



RRI-PR41612M RIVETER



FOR RIVET NUT
100



100-M4	CP258N12	Rivet Nut Head Assembly (M4)
A	CP258106	Nut
B	CP258B12	Nut Anvil (M4)
C	CP258A12	Bolt (M4)

100-M6	CP258N14	Rivet Nut Head Assembly (M6)
A	CP258106	Nut
B	CP258B14	Nut Anvil (M6)
C	CP258A14	Bolt (M6)

100-M10	CP258N16	Rivet Nut Head Assembly (M10)
A	CP258106	Nut
B	CP258B16	Nut Anvil (M10)
C	CP258A16	Bolt (M10)

100-M5	CP258N13	Rivet Nut Head Assembly (M5)
A	CP258106	Nut
B	CP258B13	Nut Anvil (M5)
C	CP258A13	Bolt (M5)

100-M8	CP258N15	Rivet Nut Head Assembly (M8)
A	CP258106	Nut
B	CP258B15	Nut Anvil (M8)
C	CP258A15	Bolt (M8)

100-M12	CP258N17	Rivet Nut Head Assembly (M12)
A	CP258106	Nut
B	CP258B17	Nut Anvil (M12)
C	CP258A17	Bolt (M12)