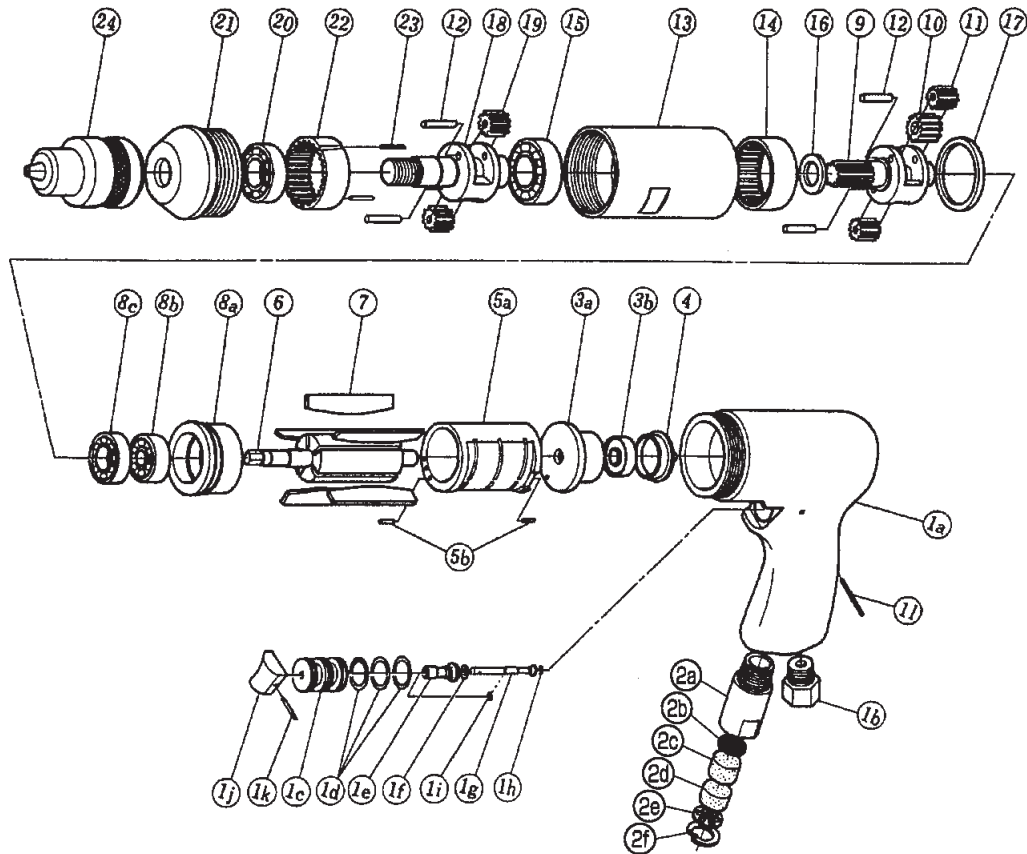


# BABY ROTARY DRILL

MODEL (YES.No.)	TOOL No.
YRD-10N-S (02)	3031 0000 0219
YRD-10N (02)	3031 0000 0200

## Exploded View



## Parts List

No.	Name of Parts	Per Set	Parts No.	No.	Name of Parts	Per Set	Parts No.	
1	Motor Case Assy.	1set	3022 0011 01 99	8	Lower Plate Assy.	1set	3031 0307 01 99	
	(a) Motor Case	1	3022 0011 00 00		(a) Lower Plate	1	3031 0307 01 00	
	(b) Hose Joint	1	2015 0113 00 00		(b) Ball Bearing (629)	1	9100 1009 00 00	
	Throttle Bushing Assy.	1set	2058 0104 00 99	(c) Ball Bearing (EE4)	1	9100 6003 00 00		
		(c) Throttle Bushing	1	* †	9	Planet Frame	1	3013 0804 00 00
	(d) O - Ring (N15)	3	9010 4008 00 00	10		Rotor Gear	1	3013 0316 00 00
	Throttle Rod Bushing Assy.	1set	0078 0105 00 99		11	Planet Gear A	2	3013 0607 00 01
	(e) Throttle Rod Bushing	1	* †	12		FF Pin (4×18)	4	8051 1143 00 00
	(f) O - Ring (No.3)	1	9010 3021 00 00		13	Gear Case	1	3031 0603 00 00
	Throttle Rod Assy.	1set	2058 0106 00 99	14		Internal Gear A	1	3013 0605 00 01
	(g) Throttle Rod	1	* †		15	Ball Bearing (6003)	1	9100 1018 00 00
(h) O - Ring (N2)	1	9010 4001 00 00	16	Washer (13.5×21×2.5)		1	8040 1031 00 00	
(i) Snap Ring (ETW-2.8)	1	9040 5008 00 00		17	Washer (34×40×2.5)	1	8040 1064 00 00	
(j) Throttle Knob	1	2024 0153 00 00	18		Main Shaft S	1	3013 0614 01 02	
(k) Spring Roll Pin (1.5×14)	1	9250 1005 00 00		19	Planet Gear B	2	3013 0607 00 02	
(l) Pin G (3×24)	1	8410 6024 00 00	20		Ball Bearing (6002)	1	9100 1017 00 00	
2	Silencer Assy.	1set		3021 0053 00 99	21	Gear Case Cap	1	3013 0611 00 00
	(a) Silencer Body	1	* †	22		Internal Gear B	1	3013 0605 00 02
	(b) Silencer Sheet (A)	1	0117 0032 00 01		23	FF Pin (2.5×12)	1	8051 1079 00 00
	(c) Silencer Sheet (B)	1	0117 0032 00 02	YRD-10N-S Standard Accessories				
	(d) Silencer Sheet (D)	1	3021 0032 00 04	Touch Joint (1/4)		1	9600 0002 00 00	
	(e) Silencer Sheet (C)	1	0117 0032 00 03	Parts for YRD-10N				
	(f) Snap Ring (IRTW-17)	1	9040 3008 00 00	24	Drill Chuck (10EL-S)	1	9600 2010 00 00	
3	Upper Plate Assy.	1set	3022 0303 01 99		YRD-10N Standard Accessories			
	(a) Upper Plate	1	3003 0303 02 00	Touch Joint (1/4)	1	9600 0002 00 00		
(b) Ball Bearing (608)	1	9100 1004 00 00	6	Chuck Handle (8)	1	9600 3002 00 00		
	4	Plate Cap		1	3022 0302 00 00			
5	Cylinder Assy.	1set	3031 0304 00 99	7	Rotor	1	3013 0305 01 00	
	(a) Cylinder	1	* †		Vane	5	3003 0306 00 00	
(b) Spring Roll Pin (2.5×8)	1	9250 1031 00 00						

The part "※" can not be supplied individually.  
So please order it as a unit of assembly shown by arrow mark (†).