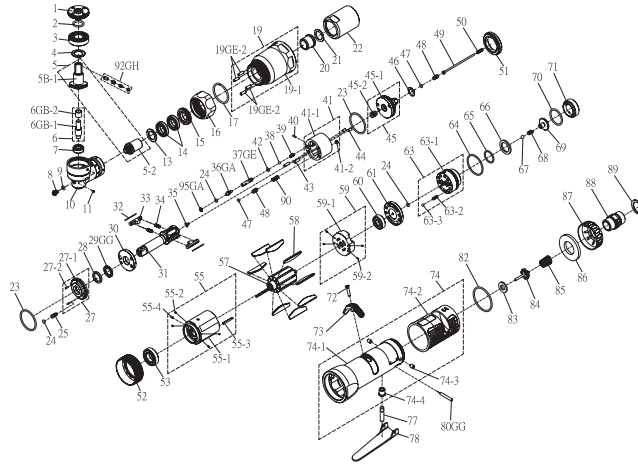


RRI-70RGT IMPULSE WRENCH



Index No.	Part No.	Description	Q'ty
1	I70RH-706	Lock Nut	1
2	00-41192	O-Ring (ø17xø2)	1
3	00-2353	Ball Bearing (16003)	1
4	I70RH-711	Washer	1
5	420-RW75-283-0705-11	Shaft Gear, Compl.	1
5B-1	I70RG-705-B	Shaft Gear	1
5-2	I70RH-704	Main Shaft Gear	1
6	420-RW70-284-0707-11	Shaft, Compl.	1
6GB-1	I70RH-707-B	Shaft	1
6GB-2	I70RH-713	Bushing	1
7	00-2357	Ball Bearing (696ZZ)	1
8	I90-410	Oil Plug	1
9	00-4153	O-Ring (ø3xø1.5)	1
10	I70RH-701	Angle Housing	1
11	00-0605	Set Screw (M4xP0.7x4L)	1
13	I70RH-712	Washer	1
14	00-2376	Ball Bearing (6803ZZ)	2
15	I70RH-709	Lock Nut	1
16	I70RH-702	Lock Nut	1
17	I70RH-708	Anvil Collar	1
19	420-RW70-284-0201-10	Front Housing, Compl.	1
19-1	I70RH-201	Front Housing	1
19GE-2	00-3448	Pin (ø2.5x8)	4
20	I40S-202	Bushing	1
21	I40S-424	Washer	1
22	I70-401	Pulse Cylinder Housing	1
23	00-41160	O-Ring (ø30xø1.5)	2
24	00-41113	O-Ring (ø2xø1.5)	3
25	I70-410	Oil Plug	1
27	420-PW70-283-0403-10	Front Plate Cover, Compl.	1
27-1	I70-403	Front Plate Cover	1
27-2	00-3318	Spring Pin (ø1.6x5)	2
28	I70-409	Back Up Ring	1
29GG	00-2612	X-Ring (ø10.77xø16.01x2.62)	1
30	I70-408	Front Plate	1
31	I70RH-405	Main Shaft	1
32	I70-452	Roller	2
33	I70-406-B	Drive Blade	2
34	I70-407	Spring	2
35	IS40-450	Block Valve	1
36GA	I80-411	Adjust Screw	1
37GE	IS70-412-C	Valve	1
38	00-3813	Steel Ball (1/8")	1
39	IS70RG-425	Spring	1
40	00-3436	Pin (ø1.5x5)	1
41	420-PW70-283-0404-11	Pulse Cylinder, Compl.	1
41-1	I70-404-B	Pulse Cylinder	1
41-2	I40S-454	Block Cap	1
42	00-41130	O-Ring (ø2xø1)	1
43	00-3435	Pin (ø3x9)	2
44	00-3407	Pin (ø3x5)	2
45	420-PW70-183-0415-12	Rear Plate, Compl.	1
45-1	IS70-415@	Rear Plate	1
45-2	IS40S-420-B	Block Cover	1
46	I40S-423	Washer	1
47	00-41173	O-Ring (ø1.42xø1.53)	2
48	IS40S-421	Pressure Valve	2
49	IS130-314	Shut Off Stem	1
50	IS150-317	Spring	1

Index No.	Part No.	Description	Q'ty
51	I70-402	Lock Nut	1
52	I70S-306	Lock Nut	1
53	00-2348	Ball Bearing (6901ZZ)	1
55	420-SW70-283-0302-10	Cylinder, Compl.	1
55-1	I70S-302	Cylinder	1
55-2	I40S-318	Block	4
55-3	00-3326	Spring Pin (ø2x18)	1
55-4	00-3324	Spring Pin (ø2x5)	1
57	I70S-303	Rotor	1
58	I70S-304	Rotor Blade	9
59	420-RW75-283-0305-10	Rear Plate, Compl.	1
59-1	I70RG-305	Rear Plate	1
59-2	I40S-318	Block	4
60	00-2356	Ball Bearing (607ZZ)	1
61	I40S-310	Airinlet Plate	1
63	420-SW40-183-0502-10	F/R Valve, Compl.	1
63-1	IS40S-502	F/R Valve	1
63-2	305F-034	Spring	1
63-3	00-3813	Steel Ball (1/8")	1
64	00-41146	O-Ring (ø21xø1.5)	1
65	00-4121	O-Ring (ø15xø1.5)	1
66	IS40S-312	Valve Washer	1
67	00-3824	Steel Ball (ø4)	1
68	IS40S-313	Spring	1
69	IS40S-311	Valve	1
70	00-41125	O-Ring (ø20.35xø1.78)	1
71	I40S-309	Seat	1
72	00-0507	Flat Head Screw (M3xP0.5x10L)	1
73	I40S-503	Regulator Knob	1
74	420-SW70-283-0101-20	Motor Housing, Compl.	1
74-1	I70S-101B	Motor Housing	1
74-2	I40S-103	Housing Rubber	1
74-3	I40S-108	Bushing	2
74-4	I40S-509	Bushing	1
77	IS40S-510	Pin	1
78	I40S-504	Trigger	1
80GG	00-3302	Spring Pin (ø3x24)	1
82	00-41127	O-Ring (ø27xø1.5)	1
83	I40S-508	Bushing	1
84	305C-021	Valve Stem	1
85	I40S-507	Spring	1
86	I40S-601	Muffler	1
87	I40S-603	Exhaust Deflector	1
88	I40S-604A	Air Inlet 1/4" -19PF	1
	I40S-604B	Air Inlet 1/4" -19PT	1
	I40S-604C	Air Inlet 1/4" -18NPT	1
89	00-3509	C type Retainer Ring (S17)	1
90	I70S-453	Spring	1
92GH	32055-WRBA-03	Pin Assembly	1
95GA	I80-422	Back Up Ring	1
※	IS70RGRK-YO	Repair kit :Index No- 23(2); 24(2); 28; 29GG; 34(2); 42; 47(2); 95GA	
※	IS70RGSK	Service kit :Index No- 5; 30; 31; 32(2); 33(2); 45; 58(9); 68; 83; 84; 85	
※	01-0507B	Impulse Oil (1000c.c)	
※	01-0508B	Impulse Oil (100c.c)	

★ Pulse unit includes: IS70RG-400ASM

Index No : 22, 23, 24, 25, 27, 28, 29GG, 30, 31, 32, 33, 34, 35, 36GA, 37GE, 38, 39, 40, 41, 42, 43, 44, 45, 47, 48, 51, 90, 95GA