

Parts List

| No. | Name of Parts | Per Set | Parts No. |
|-----|----------------------------------|---------|----------------|
| 1 | Motor Case Assy. | 1set | 0458 0011 0099 |
| * | (a) Motor Case (A) | 1 | 0460 0011 6001 |
| * | (b) Motor Case (B) | 1 | 0460 0011 6002 |
| | (c) Motor Case (C) | 1 | 0460 0011 0003 |
| | (d) Slide Cover | 1 | 0460 0035 0000 |
| | (e) Plate (A) | 1 | 0460 1303 0001 |
| | (f) Tapping Screw(M3×16) | 7 | 9540 1018 0000 |
| | (g) Motor Assy. | 1set | 0458 0330 0299 |
| | (h) FanProtector | 1 | 0460 0363 0000 |
| | (i) Fan D03X-05TM11(CX) | 1 | 0446 1556 0000 |
| | (j) Rubber Packing | 1 | 0446 0359 0000 |
| | (k) Cross Recessed Screw (M3×16) | 2 | 9410 2056 0000 |
| | (l) Power Circuit Board Assy. | 1set | 0446 0195 0299 |
| | (m) Head Screw | 3 | 9410 4002 0000 |
| | (n) Harness (A) | 1 | 0460 0208 0001 |
| | (o) Control Circuit Board Assy. | 1set | 0458 1608 0099 |
| | (p) O-Ring S6 | 2 | 9010 4026 0000 |
| | (q) Harness (B) | 1 | 0460 0208 0002 |
| | (r) Connector Board | 1 | 0460 1624 0000 |
| | (s) Display Board | 1 | 0460 1625 0000 |
| | (t) Lamp Holder | 1 | 0460 0959 0000 |
| | (u) Throttle Knob Assy. | 1set | 0446 0153 0199 |
| | (v) Spring (7.5×26) | 1 | 8020 1449 0000 |
| | (w) Spring (3.5×23) | 1 | 8020 1450 0000 |
| | (x) Reverse Lever Assy. | 1set | 0446 0007 0099 |
| | (y) Reverse Lever Spring | 1 | 0446 1615 0000 |
| | (z) Tapping Screw (M2.6×5) | 1 | 9540 1019 0000 |
| | (A) Binding Band (CV-70N) | 4 | 9790 1008 0000 |
| | (B) Tapping Screw (M3×8) | 2 | 9540 1021 0000 |
| 2 | Liner Case Assy. | 1set | 0454 0422 0099 |
| | (a) Liner Case | 1 | 0444 0422 0000 |
| | (b) O-Ring (1.78×29.87×33.43) | 1 | 9011 2003 0000 |
| | (c) Liner Cap | 1 | 0186 0423 0000 |
| | (d) Liner Upper Plate | 1 | 0186 0424 0000 |
| | (e) O-Ring (1.78×26.7×30.26) | 1 | 9011 6064 0000 |
| | Liner Assy. | 1set | 0444 0425 0099 |
| | (f) Liner | 1 | ※ ↑ |
| | (g) Pin 2×3.5 | 2 | 8052 1028 0000 |
| | (h) Pin 2×4.8 | 2 | 8052 1041 0000 |
| | (i) Relief Valve | 1 | 0444 0245 0000 |
| | (j) Pin 1.5×4 | 1 | 8051 1314 0000 |
| | (k) Main Shaft | 1 | 0454 0614 0001 |
| | (l) Blade | 2 | 0371 0719 0000 |
| | (m) Spring 3.1×20 | 2 | 8020 1296 0000 |
| | Liner Lower Plate Assy. | 1set | 0186 0426 0099 |
| | (n) Liner Lower Plate | 1 | ※ ↑ |
| | (o) Pin 3×5 | 1 | 8052 1031 0000 |
| | (p) Adjust Bolt | 1 | 0444 0522 0000 |
| | (q) O-Ring (N2) | 1 | 9010 4001 0000 |
| | (r) Back-up Ring (N2) | 1 | 9090 2001 0000 |

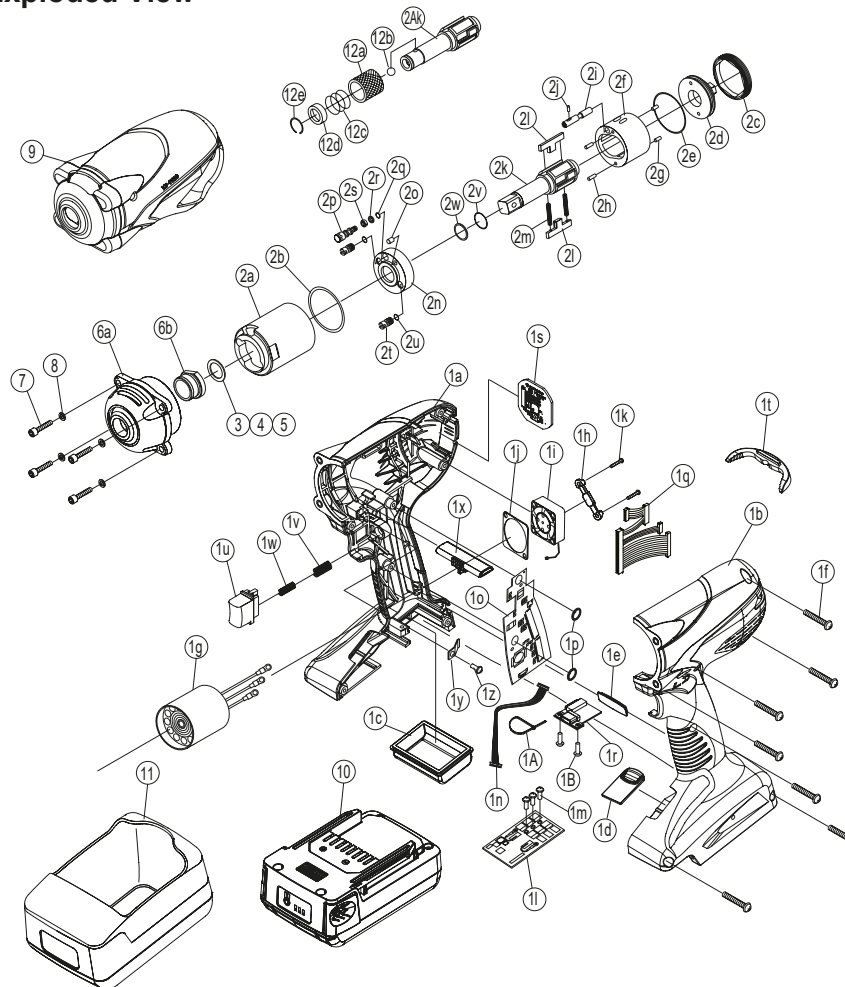
| No. | Name of Parts | Per Set | Parts No. |
|-----|---|---------|----------------|
| | (s) Nylon Bushing | 1 | 0181 0431 0000 |
| | (t) Oil Plug | 2 | 0181 0010 0000 |
| | (u) O-Ring (N2) | 2 | 9010 4001 0000 |
| | (v) O-Ring (P12) | 1 | 9011 7001 0000 |
| | (w) Back-up Ring (12×16×0.8) | 1 | 9090 1010 0000 |
| 3* | Washer (12.5×18×0.3) | 1 | 8041 5034 0000 |
| 4* | Washer (12.5×18×0.5) | 1 | 8041 5011 0000 |
| 5* | Washer (12.5×18×1) | 1 | 8041 5021 0000 |
| 6 | Hammer Case Assy. | 1set | 0454 0401 0099 |
| | (a) Hammer Case | 1 | 0454 0401 0000 |
| | (b) Main Shaft Bushing | 1 | 0259 0612 0000 |
| 7 | Hex. Socket Head Bolt (M4×14) | 4 | 8070 3008 0000 |
| 8 | Spring Washer (M4) | 4 | 9200 3012 0000 |
| | Parts for YZ-T600A | | |
| 1A | Motor Case Assy. | 1set | 0458 0011 0098 |
| 2A | Liner Case Assy. | 1set | 0454 0422 0098 |
| | (k) Main Shaft | 1 | 0454 0614 0051 |
| 12 | Bit Chuck Assy. | 1set | 2057 0414 0099 |
| | (a) Bit Chuck | 1 | 2057 0414 0000 |
| | (b) Ball (1/8) | 1 | 9150 3009 0000 |
| | (c) Spring (13.5×10) | 1 | 8020 1340 0000 |
| | (d) Spring Washer | 1 | 2331 0419 0000 |
| | (e) Retaining Ring(10×1) | 1 | 8030 1009 0000 |
| | Standard Accessories | | |
| | TF Pin (2×90) | 1 | 8051 6001 0000 |
| 9 | Protector | 1 | 0458 0029 0000 |
| 10 | Battery Pack (BPL-1820) | 1 | 0446 1521 0000 |
| | Optional Accessories | | |
| 11 | Protector (for BPL-1820) | 1 | 0446 0029 0001 |
| 10 | Battery Pack (BPL-1820) | 1 | 0446 1521 0000 |
| | Battery Charger (BC0075G) | 1 | 0446 1606 0000 |
| | Power Cord 1.5M (Domestic) | 1 | 8521 0008 0000 |
| | Power Cord 2.0M (R. Pin for Europe) | 1 | 8521 0009 0000 |
| | Power Cord 1.5M<VM0718-VM0719>(for China) | 1 | 8521 0029 0000 |
| | Power Cord 1.5M<VM0228A-VM0296>(for US) | 1 | 8521 0032 0000 |
| | Power Cord 1.5M<VM0773-VM0776>(for India) | 1 | 8521 0033 0000 |
| | Hanger (A) | 1 | 0446 0017 0001 |
| | Hanger Crip (A) | 1 | 0446 1801 0001 |



Battery Shut-off Wrenches

| MODEL (YES.No.) | TOOL No. |
|-----------------|----------------|
| YZ-T600 (00) | 0458 0000 0000 |
| YZ-T600A (00) | 0458 0000 0001 |

Exploded View



*Please replace the Motor Case(A) and the Motor Case(B) as a unit. Also please describe our model name when you order.

The part "※" can not be supplied individually. So please order it as a unit of assembly shown by arrow mark(↑).

★Marked parts may not be used, in some case.