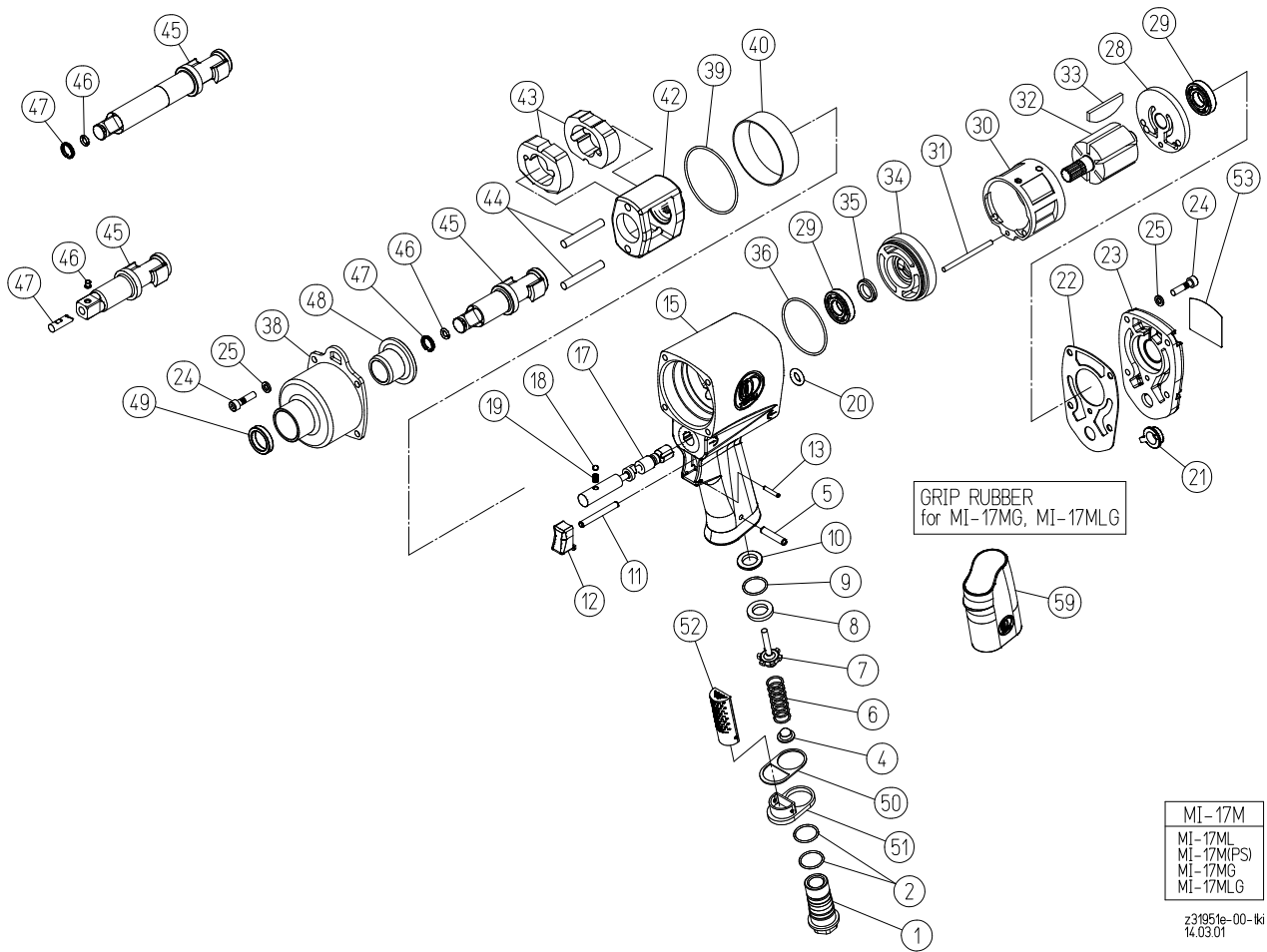


# MI-17MG IMPACT WRENCH



Index no.	Part no.	Description	Q'ty
1	43-18-70-850	Air Inlet	1
2	13-11-03-015	O Ring (S-18)	2
4	13-68-03-049	Air Screen	1
5	13-06-04-025	Spring Pin (4 X 25)	1
6	13-08-03-181	Throttle Valve Spring	1
7	43-13-94-080	Throttle Valve	1
8	13-68-04-007	Throttle Valve Seat	1
9	13-11-03-015	O Ring (S-18)	1
10	43-13-95-D80	Throttle Valve Spacer	1
11	13-04-03-140	Throttle Pin	1
12	13-67-03-034	Trigger	1
13	13-06-02-118	Spring Pin (3/32 X 11/16)	1
15	43-19-51-01B	Motor Housing CP	1
17	43-13-94-210	Reverse Valve	1
18	13-05-02-010	Steel Ball 5/32 (M3.97)	1
19	13-08-03-182	Detent Spring	1
20	13-11-17-203	O Ring (AS568-203)	1
21	13-67-04-001	Regulator Switch	1
22	13-62-02-059	Housing Cover Gasket	1
23	43-19-51-350	Housing Cover	1
24	13-17-05-020	Hex. Socket Head Cap Screw (M5 X 20)	8
25	13-13-10-005	Spring Washer (M5)	8
28	43-11-10-370	Rear End Plate	1
29	13-01-20-004	Bearing (EE-4)	2
30	43-18-70-360	Liner	1

Index no.	Part no.	Description	Q'ty
31	13-04-03-123	Liner Pin (3.71 X 54.76)	1
32	43-18-03-390	Rotor	1
33	13-71-10-108	Vane	6
34	43-11-10-380	Front End Plate	1
35	13-12-10-003	Oil Seal (AF-0437H1)	1
36	13-11-17-032	O Ring (AS568-032)	1
38	43-18-70-520	Clutch Housing	1
39	13-11-17-035	O Ring (AS568-035)	1
40	13-66-22-001	Housing Adaptor Ring	1
42	43-18-70-440	Hammer Frame	1
43	43-18-01-450	Hammer	2
44	43-18-70-460	Hammer Pin	2
45	43-18-70-500	Anvil Shank	1
46	13-11-05-006	O Ring (6227-6)	1
47	13-08-05-006	Socket Retainer	1
48	43-18-70-490	Shank Bushing	1
49	13-12-02-023	Oil Seal (VB - 19.05 x 25.4 x 3.2)	1
50	13-62-02-040	Exhaust Deflector Gasket	1
51	13-74-03-021	Exhaust Deflector	1
52	13-74-03-022	Muffler	1
53	13-73-05-190	Name Plate	1
59	13-66-07-061	Grip Rubber	1
	43-18-70-50C	Anvil Shank CP (Incl. Index No.45, 46 & 47)	(1CP)