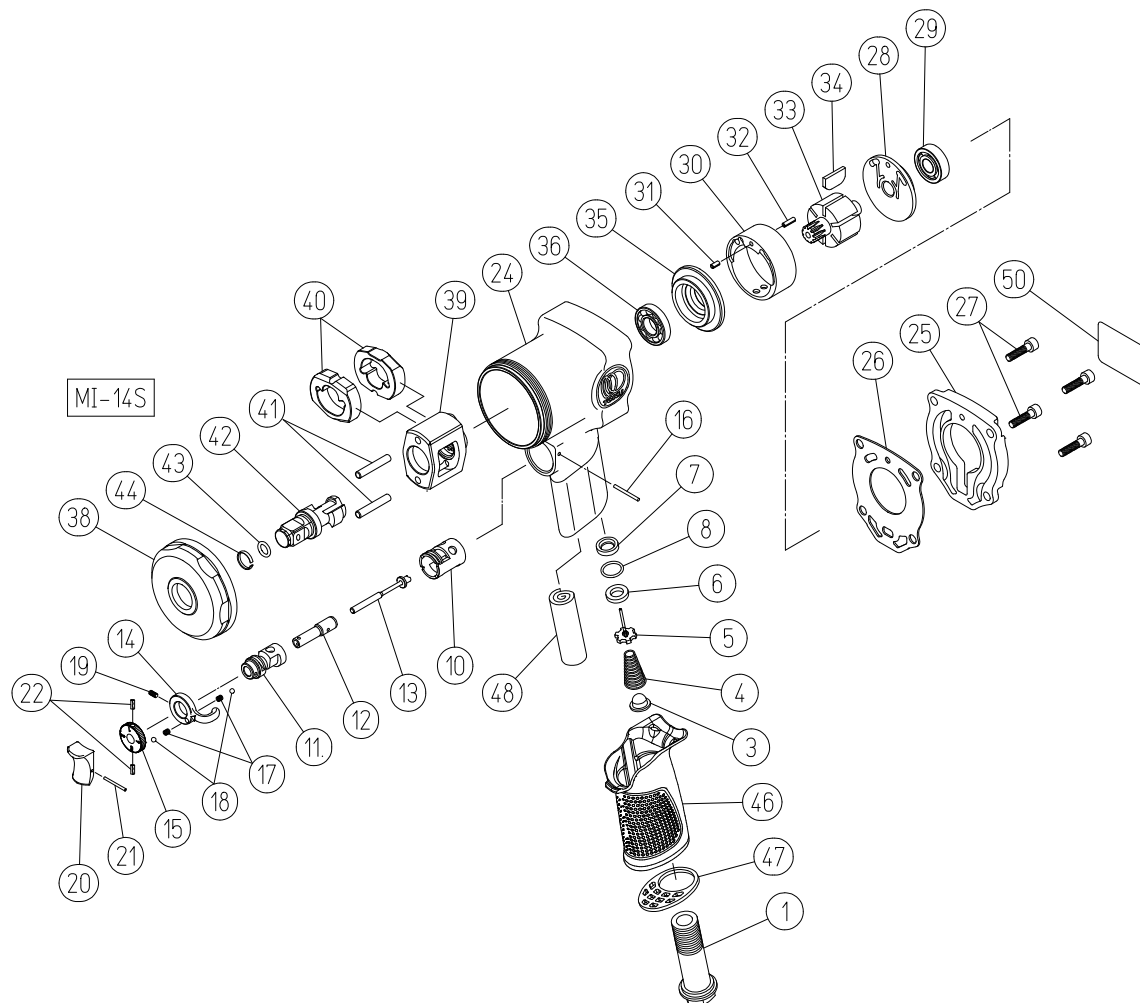


# MI-14S1/2 IMPACT WRENCH



Index no.	Part no.	Description	Q'ty
1	431977840	Air inlet (PT)	1
3	136803049	Air screen	1
4	130803202	Throttle valve spring	1
5	136805003	Throttle valve	1
6	136804009	Throttle valve seat	1
7	431702D80	Throttle valve spacer	1
8	131103011	O-Ring S-12,5	1
10	431890200	Reverse valve bushing	1
11	431890210	Reverse valve	1
12	431890150	Control valve	1
13	431890100	Throttle push pin	1
14	431977230	Reverse valve lever	1
15	431890260	Control valve knob	1
16	469711230	Pin 2 x 23	1
17	130809005	Spring 3 x 4 (0,4)	2
18	130502008	Steel ball 1/8	2
19	132203006	Hex screw m3 x 6	1
20	136703076	Trigger	1
21	130601134	Spring pin 1,6 x 14	1
22	130602206	Spring pin 2 x 6	2
24	431977010	Motor housing	1
25	431977350	Housing cover	1
26	136104168	Housing cover gasket	1
27	131705014	Hex bolt M5 x 14	4
28	431977370	Rear plate	1

Index no.	Part no.	Description	Q'ty
29	130120003	Bearing EE-3	1
30	431977360	Liner	1
31	130603006	Spring pin 3 x 6	1
32	130603010	Spring pin 3 x 6	1
33	431977390	Rotor	1
34	137107023	Vane	6
35	431977380	Front plate	1
36	130120004	Bearing EE-4	1
38	431977520	Clutch housing	1
39	431977440	Hammer frame	1
40	431977450	Hammer	2
41	431977460	Hammer pin	2
42	431977900	Anvil shank (RH)	1
43	131105006	O-Ring 6227-6	1
44	130805006	Socket retainer	1
46	136607103	Grip	1
47	137403030	Exhaust deflector	1
48	137403032	Silencer	1
50	137305202	Name plate	1
54	136503002	Poly cap 1/4	1
56	134804005	1/4 coupler stem	1
58	431977850	Air inlet (NPT)	0
	43197790C	Anvil shank (RH) CP	1
<b>Option</b>			
	43197850C	Anvil shank (3/8) CP	1