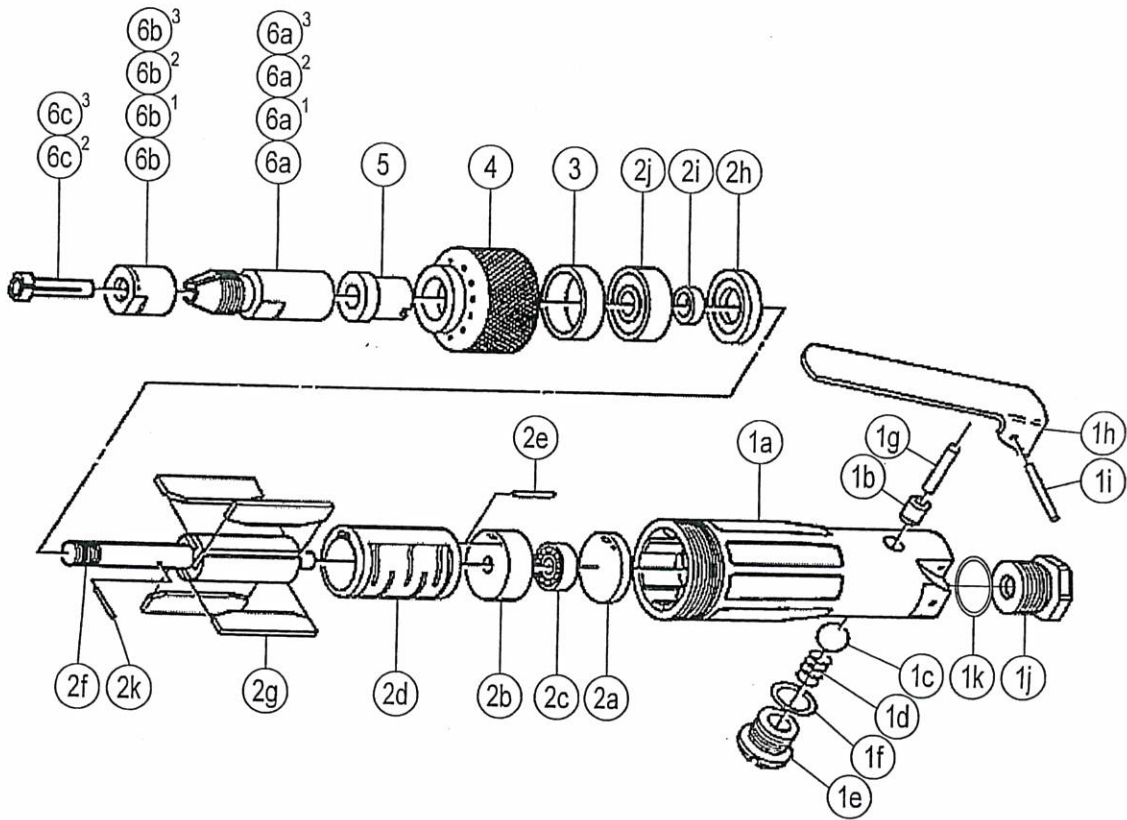




GRINDER

MODELS (YES.No.)	TOOL No.
MG-0A (05)	1009 0000 0500
MG-0A-R (05)	1009 0000 0509

Exploded View



YOKOTA INDUSTRIAL CO., LTD.

Parts List

No.	Name of Parts	Per Set	Parts No.	No.	Name of Parts	Per Set	Parts No.
1	Motor Case Assy.	1set	1009 0011 02 99	Parts for MG-OA-R			
	(a) Motor Case	1	1009 0011 03 00	1'	Motor Case Assy.	1set	1009 0011 02 98
	(b) Throttle Bushing	1	1701 0104 00 00		(g) Pin AF (4×18)	1	8051 2011 00 00
	(c) Ball (3/8)	1	9150 4005 00 00		(h) Throttle Lever (A) Assy.	1set	1009 0110 00 99
	(d) Spring (8×16)	1	8020 1066 00 00		(l) Throttle Lever (A)	1	1009 0110 00 01
	Throttle Cap Assy.	1set	0004 0107 00 99		(m) Throttle Lever (B)	1	1009 0110 00 02
	(e) Throttle Cap	1	※ ↑		(n) Throttle Lever (C)	1	1009 0110 00 03
	(f) O-Ring (P11)	1	9010 1010 00 00		(o) Torsion Coil Spring	1	1009 0125 00 00
	(g) Pin (4×16)	1	8051 1140 00 00	Standard Accessories			
	(h) Throttle Lever	1	1009 0110 00 00	☆ Touch Joint	1	9690 0002 00 00	
	(i) Spring Pin (3×22)	1	9250 1054 00 00	☆ Hose Nipple Assy. (XA-352)	1set	8110 1004 00 99	
	Hose Joint Assy.	1set	4008 0113 00 99	Spanner (H13)	2	8081 0008 00 00	
	(j) Hose Joint	1	4008 0113 02 00	Optional Parts			
	(k) O-Ring (S15)	1	9010 4008 00 00	6 ¹	Collet Chuck Assy. (1/4)	1set	1013 0661 02 99
	2	Motor Assy.	1set		1009 0305 01 99	(a) Collet Chuck (1/4)	1
		(a) Upper Plate Spacer	1	1009 0301 00 00	(b) Collet Nut	1	1001 0660 01 00
		Upper Plate Assy.	1set	1002 0303 00 99	6 ²	Collet Chuck Assy. (1/8)	1set
(b) Upper Plate		1	1002 0303 00 00	(a) Collet Chuck (1/4)		1	1013 0661 00 02
(c) Miniature Bearing (696)		1	9130 0001 00 00	(b) Collet Nut		1	1001 0660 01 00
Cylinder Assy.		1set	1009 0304 01 99	(c) Chuck Bushing (1/8×1/4)	1	1001 0659 00 03	
(d) Cylinder		1	※ ↑	6 ³	Collet Chuck Assy. (3MM)	1set	1013 0661 04 99
(e) Spring Pin (2×14)		1	9250 1017 00 00		(a) Collet Chuck (6MM)	1	1013 0661 00 00
(f) Rotor		1	1009 0305 01 00		(b) Collet Nut	1	1001 0660 01 00
(g) Vane		4	1002 0306 00 00		(c) Chuck Bushing (3×6)	1	1001 0659 00 01
(h) Lower Plate		1	1009 0307 00 00				
(i) Rotor Spacer		1	1003 0310 02 00				
(j) Ball Bearing (628Z)		1	9100 4015 00 00				
(k) Spring Pin (2×12)	1	9250 1015 00 00					
3	Bearing Spacer	1	1009 0624 00 00				
4	Motor Case Cover	1	1009 0001 01 00				
5	Chuck Spacer	1	1009 0667 00 00				
6	Collet Chuck Assy. (6MM)	1set	1013 0661 01 99				
	(a) Collet Chuck (6MM)	1	1013 0661 00 00				
	(b) Collet Nut	1	1001 0660 01 00				

The part "※" can not be supplied individually.
So please order it as a unit of assembly shown by arrow mark(↑).

☆Marked parts; use one of them.