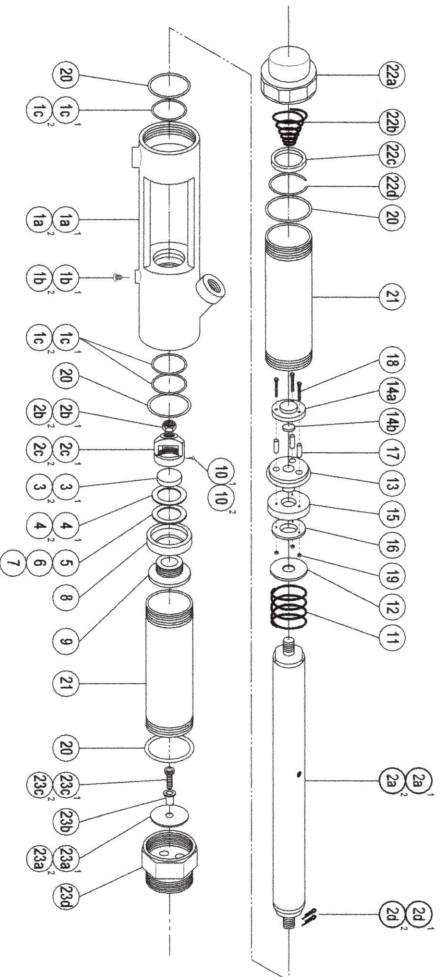


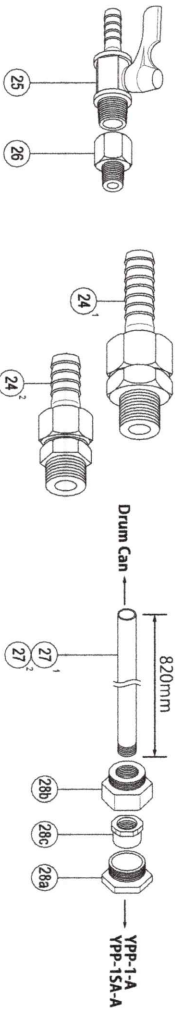
PISTON PUMPS

MODEL (YES.No.)	TOOL No.
YPP-1 (04)	7003 0000 0400
YPP-1-A (04)	7003 0000 0401
YPP-1SA (00)	7005 0000 0000
YPP-1SA-A (00)	7005 0000 0001

Exploded View



Standard Accessories



Parts List

No.	Name of Parts	Per Set	Parts No.
1	Cylinder Case Assy.	1set	7003 1001 01 99
(a)	Cylinder Case (M6×10)	1	9440 2015 00 00
(b)	Screw (P35)	3	9010 1026 00 00
(c)	O-Ring (P35)	1	7003 1011 01 99
2	Piston Rod Assy.	1set	7003 1011 01 99
(a)	Piston Rod (W1/2)	1	9500 2001 00 02
(b)	Hex. Nut (W1/2)	1	7003 1012 00 00
(c)	Discharge Valve Case (3×30)	2	9260 1001 00 00
(d)	Split Pin (30.5×41×2.5)	1	8040 1032 00 00
3	Washer (30.5×41×0.2)	1	8010 1137 00 00
4	C-Packing (30.5×41×0.3)	1	8010 1138 00 00
5	C-Packing (30.5×41×0.3)	1	8010 1139 00 00
6	C-Packing (30.5×41×0.5)	1	7003 1014 00 00
7	Case Packing Step (M4×8)	1	9400 2006 00 00
8	Screw (42×36)	1	8020 1123 00 00
9	Spring (14.5×43×2.5)	1	8040 1032 00 00
10	Washer (14.5×43×2.5)	1	7003 1008 01 00
11	Piston Valve (A) Assy.	1set	7003 1005 01 99
(a)	Piston Valve (A)	1	7003 1005 01 01
(b)	Piston Valve Sheet	1	7003 1006 00 00
12	Piston Packing (B)	1	7003 1009 01 00
13	Piston Valve (B)	1	7003 1005 02 02
14	Piston Valve Spacer (M5×28)	3	8070 3094 00 00
15	Hexagon Socket Bolt (M5)	3	9500 1011 00 01
16	Hexagon Nut (M5)	4	8010 3015 00 00
17	FA-Packing (48×54×1.5)	2	7003 1003 00 00
18	Upper Cylinder	1set	7003 0801 00 00
19	Cylinder Cap Assy.	1	7003 0801 00 00
(a)	Cylinder Cap	1	8020 3047 00 00
(b)	Conical Spring (20×42×35)	1	8040 1065 00 00
(c)	Washer (36×42×6)	1	8030 1016 01 99
(d)	Retaining Ring (40.9×2.3)	1	7003 1016 01 99
20	Induction Valve Assy.	1set	7003 1016 01 99
(a)	Induction Valve	1	7003 1016 01 00
(b)	Collar	1	8070 3033 00 00
(c)	Hexagon Socket Bolt (M6×22×18)	1	7003 0844 00 00
(d)	Induction Valve Assy.	1set	7003 1018 00 99
21	Hose Nipple Assy.	1set	8110 1008 00 99
(a)	Hose Nipple Assy. (PT3/8×PT3/8)	1	9650 0002 00 00
(b)	Air Cock (1/4×3/8)	1	8200 1012 00 00
22	Inlet Thread	1	8200 1012 00 00
23	Drum Can	1	8200 1012 00 00
24	Drum Joint	1	7003 1036 00 99
(a)	Drum Joint	1	7003 1036 00 00
(b)	Drum Joint Inlet Thread	1	7003 1037 00 00
(c)	Drum Joint Bushing	1	7003 1038 00 00

The part "*" can not be supplied individually.
 So please order it as a unit of assembly shown by arrow mark (↑).
 ★Marked parts ; one of them is used.