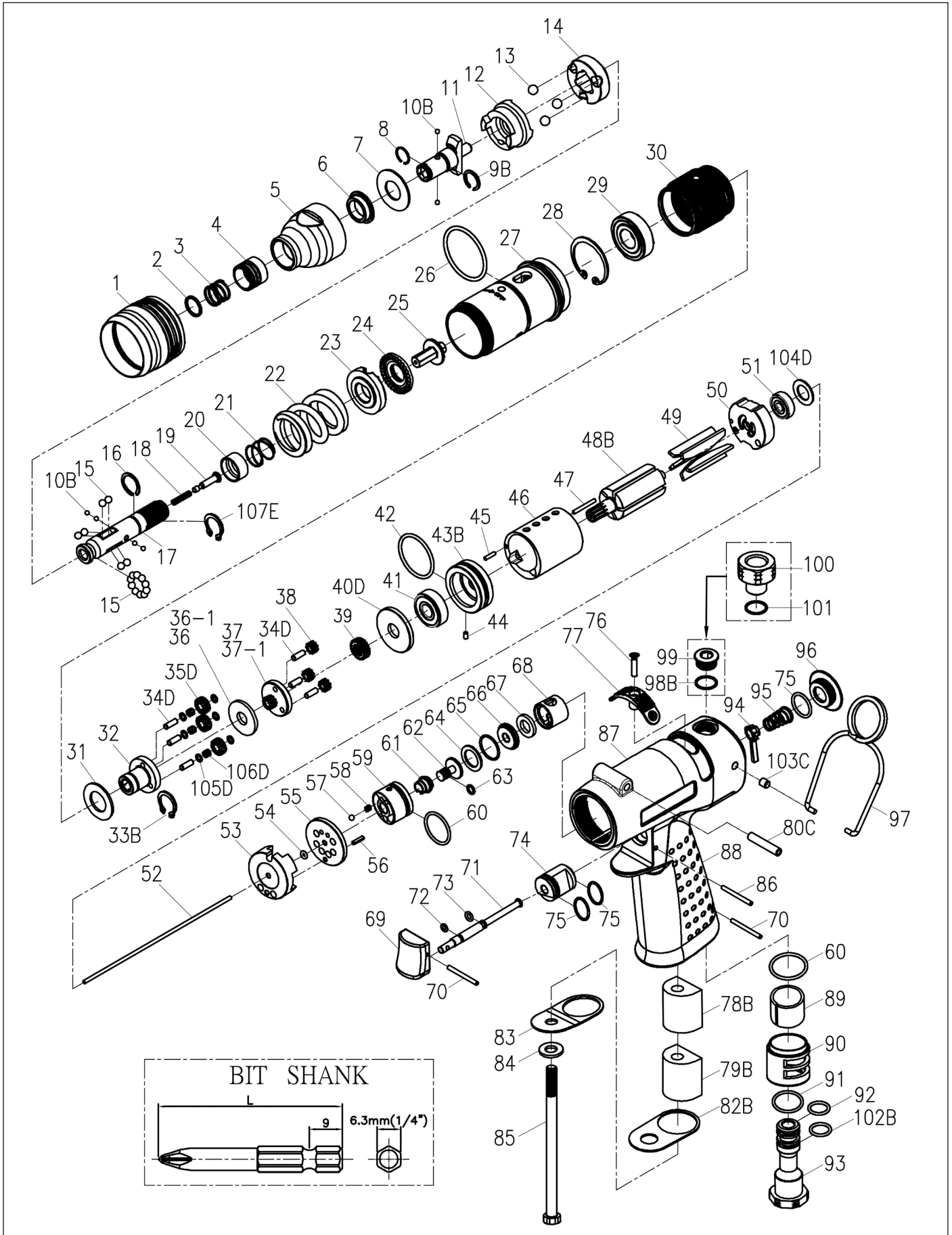


RRI-SP31706

SCREWDRIVER (PISTOL TYPE)

EDITION: E



RRI-SP31706 SCREWDRIVER (PISTOL TYPE)

EDITION: E

Index No.	Part No.	Description	Q'ty
1	B30S-207	Adjusting Cover	1
2	B20S-415	Spring Washer	1
3	B20S-418	Spring	1
4	B20S-417	Quick Change Holder	1
5	B30S-420	Housing Cover	1
6	B20S-202	Anvil Bushing	1
7	00-1516	Washer(12x12x26 x1t)	1
8	B20S-428B	Anvil Collar B	1
9B	B20S-428A	Anvil Collar A	1
10B	00-3835	Steel Ball (Ø 2.5)	6
11	B30S-405	Anvil	1
12	B30S-425	Clutch Ring	1
13	00-3812	Steel Ball (7/32")	3
14	B30S-433	Spring Seat	1
15	00-3815	Steel Ball (5/32")	16
16	B20S-428C	Anvil Collar C	1
17	B30S-416	Transmission Shaft	1
18	B30-524	Spring	1
19	B30S-527	Piston	1
20	B30S-449	Control Ring	1
21	B20S-427	Spring	1
22	B30S-429	Spring	1
23	B30S-431	Adjusting Lock Ring	1
24	B30S-430	Adjusting Nut	1
25	B30S-421	Connecting Shaft	1
26	00-41226	O-Ring (Ø29 x Ø2)	1
27	B30SL-201	Clutch Housing	1
28	00-3113	Snap Ring (R28)	1
29	00-2305A	Ball Bearing (6001)	1
30	C20S-440	Internal Gear	1
31	C20S-441	Washer	1
32	C30S-442A	Front Gear Cage A	1
33B	00-3507	Snap Ring (S12)	1
34D	00-3424	Pin (Ø3 x 8L)	6
35D	C30S-443A	Planet Gear A	6
36-1	C20S-444B	Washer B(2m/m)	1
37-1	C20S-452B	Rear Gear Cage B Assem.	1
40D	C30S-448	Rear Cover	1
41	00-2332	Ball Bearing (608ZZ)	1
42	00-41177	O-Ring (Ø25.12 x Ø1.78)	1
43B	B20S-301	Front Plate	1
44	00-3328	Spring Pin (Ø2 x 4L)	1
45	00-3430	Pin (Ø2 x 8L)	1
46	C30S-302	Cylinder	1
47	00-3404	Pin (Ø2 x 17.8L)	1
48B	CS30S-303A-B	Rotor A	1
49	B30S-304	Rotor Blade	5
50	C30S-305	Rear Plate	1
51	00-2355	Ball Bearing (625Z)	1
52	B30-314	Valve Stem	1
53	B30-519	Transfer Valve	1
54	00-41113	O-Ring (Ø2 x Ø1.5)	1
55	B20-520	Transmission Washer	1
56	00-3325	Spring Pin (Ø2 x 6L)	1

Index No.	Part No.	Description	Q'ty
57	00-3805	Steel Ball (1/8")	1
58	I100-506	Spring	1
59	B20-502	Reverse Valve	1
60	00-41145	O-Ring (Ø18 x Ø1.5)	2
61	B20-526	Guide Ring	1
62	B20-318	Shut Bar	1
63	00-4190	O-Ring (Ø4 x Ø1)	1
64	B20-533	Washer	1
65	00-41211	O-Ring (Ø14 x Ø1)	1
66	B20-522	Washer	1
67	B20-319	Bushing	1
68	B20-521	Bushing	1
69	B20-504	Trigger	1
70	00-3346	Spring Pin (Ø2 x 20L)	2
71	B20-510	Pin	1
72	00-41105	O-Ring (Ø3 x Ø1)	1
73	00-41231	O-Ring (Ø2.5 x Ø2)	1
74	B20-530	Valve	1
75	00-41175	O-Ring (Ø13 x Ø1.5)	3
76	00-0511	Screw (M3 x 14L)	1
77	B20-503	Reverse Knob	1
78B	B20-601D	Muffler	1
79B	B20-601A	Muffler	1
80C	B20-108A	Bushing	1
82B	B20-607-B	Gasket	1
83	B20-608	Deflector Cap	1
84	B20-609	Washer	1
85	00-0149	Screw (M6 x 95L)	1
86	I100-511	Pin	1
87	B20-101	Motor Housing	1
88	B20-103	Housing Rubber	1
89	I40-601	Muffler	1
90	B20-603	Exhaust Deflector	1
91	00-41111	O-Ring (Ø16 x Ø1.5)	1
92	00-41247	O-Ring (Ø10.5 x Ø1.5)	1
93	B20-604A	Air Inlet 1/4" PF-19	1
	B20-604B	Air Inlet 1/4" PT-19	
	B20-604C	Air Inlet 1/4" NPT-18	
94	B20-523	Valve Stem	1
95	C20S-515	Spring	1
96	B20-104	Screw Cap	1
97	I40S-102	Hanger	1
98B	00-41254	O-Ring (Ø8 x Ø1.5)	1
99	B20-107	Set Screw	1
100	C20-604A	Air Inlet 1/4" PF-19	1
	C20-604B	Air Inlet 1/4" PT-19	
	C20-604C	Air Inlet 1/4" NPT-18	
101	00-4118	O-Ring (P10A)	1
102B	00-4107	O-Ring (P9)	1
103C	B20-108B	Bushing	2
104D	BS30R-160-607	Gasket	1
105D	33239-WRCA-05	Washer	12
106D	00-3477	Pin (Ø0.5 x 3L)	132
107E	00-3516	Snap Ring (STW-11)	1