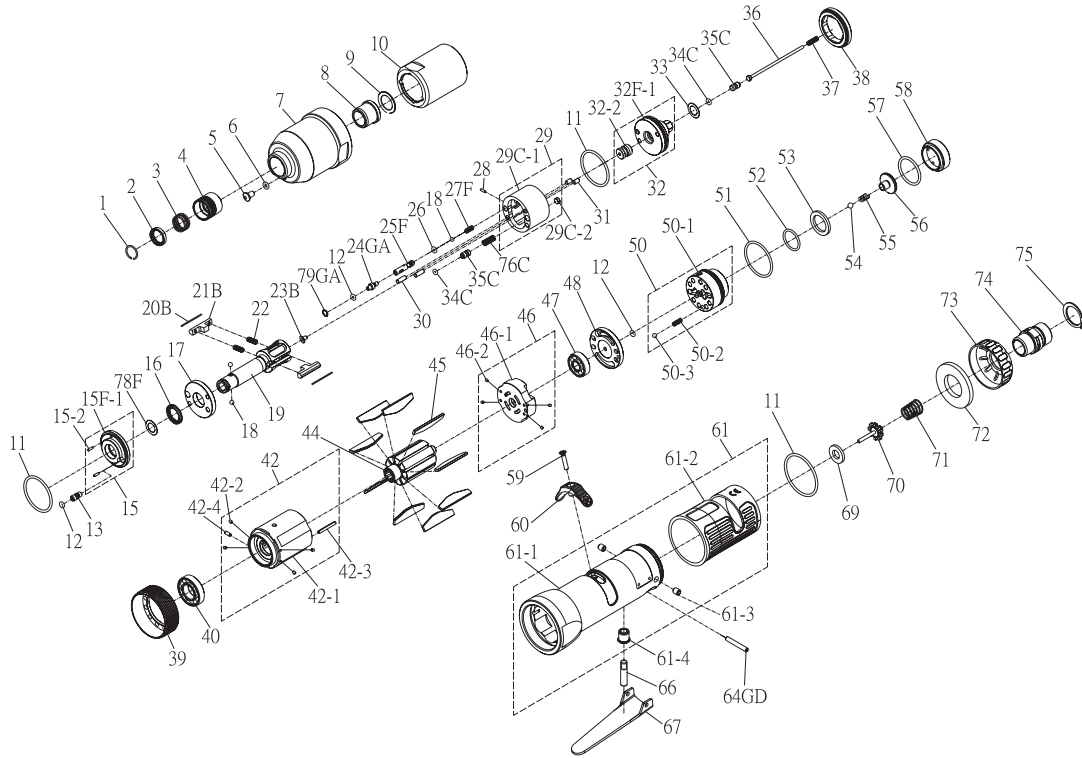


# RRI-40STA IMPULSE WRENCH



Index No.	Part No.	Description	Q'ty
1	757-026	Anvil Collar	1
2	I40SD-419	Hold Spacer	1
3	I40SD-418	Spring	1
4	I40SD-417	Quick Change Hold	1
5	I100-410	Oil Plug	1
6	00-4153	O-Ring (ø3xø1.5)	1
7	I40S-201	Front Housing	1
8	I40S-202	Bushing	1
9	I40S-424	Washer	1
10	I40S-401	Pulse Cylinder Housing	1
11	00-41127	O-Ring (ø27xø1.5)	3
12	00-41113	O-Ring (ø2xø1.5)	3
13	I70-410	Oil Plug	1
15	420-SW40-283-0403-11	Front Plate Cover, Compl.	1
15F-1	I40S-403-B	Front Plate Cover	1
15-2	00-3318	Spring Pin (ø1.6x5)	2
16	00-2602	X-Ring (ø10.77xø16.01x2.62)	1
17	I40S-408	Front Plate	1
18	00-3813	Steel Ball (1/8")	3
19	I40SD-405	Main Shaft	1
20B	I40S-452	Roller	2
21B	I40S-406-B	Drive Blade	2
22	I40S-407	Spring	2
23B	IS40-450	Block Valve	1
24GA	I80-411	Adjust Screw	1
25F	IS40S-412-C	Valve	1
26	00-41130	O-Ring (ø2xø1)	1
27F	IS40SD-425-C	Spring	1
28	00-3436	Pin (ø1.5x5)	1
29	420-SW40-283-0404-11	Pulse Cylinder, Compl.	1
29C-1	I40S-404-B	Pulse Cylinder	1
29C-2	I40S-454	Block Cap	1
30	00-3435	Pin (ø3x9)	2
31	00-3407	Pin (ø3x5)	2
32	420-SW40-183-0415-12	Rear Plate, Compl.	1
32F-1	IS40S-415@	Rear Plate	1
32-2	IS40S-420-B	Block Cover	1
33	I40S-423	Washer	1
34C	00-41173	O-Ring (ø1.42xø1.53)	2
35C	IS40S-421	Pressure Valve	2
36	IS40S-314	Shut Off Stem	1
37	IS40S-317	Spring	1
38	I40S-402	Lock Nut	1
39	I40S-306	Lock Nut	1
40	00-2348	Ball Bearing (6901ZZ)	1
42	420-SW40-283-0302-10	Cylinder, Compl.	1
42-1	I40S-302	Cylinder	1
42-2	I40S-318	Block	4
42-3	00-3326	Spring Pin (ø2x18)	1
42-4	00-3324	Spring Pin (ø2x5)	1

Index No.	Part No.	Description	Q'ty
44	I40S-303	Rotor	1
45	I40S-304	Rotor Blade	9
46	420-SW40-283-0305-10	Rear Plate, Compl.	1
46-1	I40S-305	Rear Plate	1
46-2	I40S-318	Block	4
47	00-2356	Ball Bearing (607ZZ)	1
48	I40S-310	Air Inlet Plate	1
50	420-SW40-183-0502-10	F/R Valve, Compl.	1
50-1	IS40S-502	F/R Valve	1
50-2	305F-034	Spring	1
50-3	00-3813	Steel Ball (1/8")	1
51	00-41146	O-Ring (ø21xø1.5)	1
52	00-4121	O-Ring (ø15xø1.5)	1
53	IS40S-312	Valve Washer	1
54	00-3824	Steel Ball (ø4)	1
55	IS40S-313	Spring	1
56	IS40S-311	Valve	1
57	00-41125	O-Ring (ø20.35xø1.78)	1
58	I40S-309	Seat	1
59	00-0507	Flat Head Screw (M3xP0.5x10L)	1
60	I40S-503	Regulator Knob	1
61	420-SW40-283-0101-20	Motor Housing, Compl.	1
61-1	I40S-101B	Motor Housing	1
61-2	I40S-103	Housing Rubber	1
61-3	I40S-108	Bushing	2
61-4	I40S-509	Bushing	1
64GD	00-3302	Spring Pin (ø3x24)	1
66	IS40S-510	Pin	1
67	I40S-504	Trigger	1
69	I40S-508	Bushing	1
70	305C-021	Valve Stem	1
71	I40S-507	Spring	1
72	I40S-601	Muffler	1
73	I40S-603	Exhaust Deflector	1
74	I40S-604A	Air Inlet 1/4"-19PF	1
	I40S-604B	Air Inlet 1/4"-19PT	1
	I40S-604C	Air Inlet 1/4"-18NPT	1
75	00-3509	C type Retainer Ring (S17)	1
76C	I40S-453	Spring	1
78F	I40-409	Back Up Ring	1
79GA	I80-422	Back Up Ring	1
*	IS40SDRK-YO	Repair kit: Index No- 11(2); 12(2); 16; 22(2); 26; 34C(2); 78F; 79GA	
*	IS40SDSK	Service kit: Index No- 17; 19; 20B(2); 21B(2); 32; 45(9); 55; 69; 70; 71	
*	01-0507B	Impulse Oil (1000c.c.)	
*	01-0508B	Impulse Oil (100c.c.)	

★ Pulse unit includes: IS40SD-400ASM

Index No : 10, 11, 12, 13, 15, 16, 17, 18, 19, 20B, 21B, 22, 23B, 24GA, 25F, 26, 27F, 28, 29, 30, 31, 32, 34C, 35C, 38, 76C, 78F, 79GA