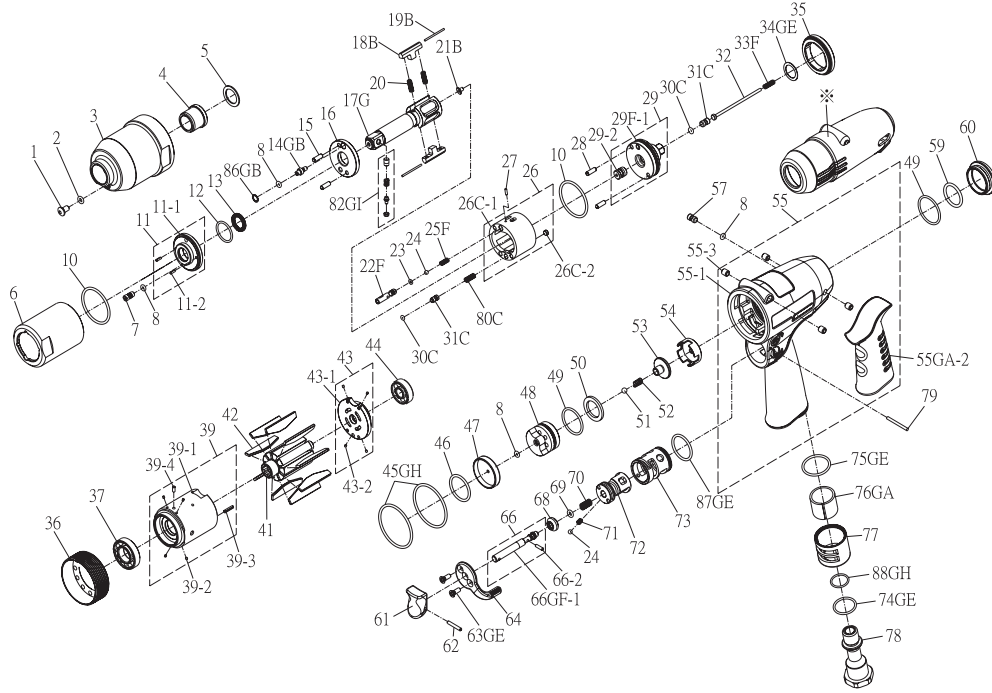


RRI-90T IMPULSE WRENCH



Index No.	Part No.	Description	Q'ty
1	I90-410	Oil Plug	1
2	00-4153	O-Ring (ø3xø1.5)	1
3	I90-201	Front Housing	1
4	I100-202	Bushing	1
5	I100-424	Washer	1
6	I90-401	Pulse Cylinder Housing	1
7	I70-410	Oil Plug	1
8	00-41113	O-Ring (ø2xø1.5)	4
10	00-41163	O-Ring (ø34.65xø1.78)	2
11	420-PW90-284-0403-10	Front Plate Cover, Compl.	1
11-1	I90-403	Front Plate Cover	1
11-2	00-3407	Pin (ø3x5)	2
12	I100-409	Back Up Ring	1
13	00-2601	X-Ring (ø15.54xø20.78x2.62)	1
14GB	I80-411	Adjust Screw	1
15	00-3435	Pin (ø3x9)	2
16	I90-408	Front Plate	1
17G	I90-405-B	Main Shaft	1
18B	I90-406-B	Drive Blade	2
19B	I90-452	Roller	2
20	I90-407	Spring	2
21B	IS40-450	Block Valve	1
22F	IS90-412-C	Valve	1
23	00-41162	O-Ring (ø2.5xø1)	1
24	00-3813	Steel Ball (1/8")	2
25F	IS90-425-C	Spring	1
26	420-PW90-284-0404-11	Pulse Cylinder, Compl.	1
26C-1	I90-404-B	Pulse Cylinder	1
26C-2	I40S-454	Block Cap	1
27	00-3433	Pin (ø2x4.4)	1
28	00-3419	Pin (ø3x6)	2
29	420-PW90-184-0415-12	Rear Plate, Compl.	1
29F-1	IS90-415@	Rear Plate	1
29-2	IS40S-420-B	Block Cover	1
30C	00-41173	O-Ring (ø1.42xø1.53)	2
31C	IS40S-421	Pressure Valve	2
32	IS90-314	Shut Off Stem	1
33F	IS150-317	Spring	1
34GE	I90-423	Washer	1
35	I90-402	Lock Nut	1
36	I90-306	Lock Nut	1
37	00-2351	Ball Bearing (6902ZZ)	1
39	420-PW90-284-0302-10	Cylinder, Compl.	1
39-1	I90-302	Cylinder	1
39-2	I100-318	Block	4
39-3	00-3339	Spring Pin (ø2.5x8)	1
39-4	00-3324	Spring Pin (ø2x5)	1
41	I90-303	Rotor	1
42	I90-304	Rotor Blade	9
43	420-PW90-284-0305-10	Rear Plate, Compl.	1
43-1	I90-305	Rear Plate	1
43-2	I40S-318	Block	4
44	00-2358	Ball Bearing (16001)	1

Index No.	Part No.	Description	Q'ty
45GH	00-41112	O-Ring (ø42xø2)	2
46	00-41138	O-Ring (ø28.3xø1.78)	1
47	IS100-307	Rear Cover	1
48	IS100-524	Valve Seat	1
49	00-41127	O-Ring (ø27xø1.5)	2
50	IS100-312	Valve Washer	1
51	00-3824	Steel Ball (ø4)	1
52	IS100-313	Spring	1
53	IS100-311	Valve	1
54	IS100-518	Seat	1
55	420-PW90-184-0101-10	Motor Housing, Compl.	1
55-1	IS90-101	Motor Housing	1
55GA-2	I90-103	Housing Rubber	1
55-3	I40S-108	Bushing	4
57	IS100-609	Screw	1
59	00-41166	O-Ring (ø24xø2)	1
60	I100-104	Nut	1
61	I130-504	Trigger	1
62	00-3354	Spring Pin (ø2x14)	1
63GE	00-0512	Flat Head Screw (M3x8L)	2
64	I100-503	Regulator Knob	1
66	420-PW100-184-0505-30	Valve Stem, Compl.	1
66GF-1	IS100-505C	Valve Stem	1
66-2	00-3356	Spring Pin (ø2x8)	1
68	I100-508	Bushing	1
69	00-41172	O-Ring (ø2.57xø1.78)	1
70	I100-507	Spring	1
71	I100-506	Spring	1
72	IS100-502	F/R Valve	1
73	I100-501	Valve Sleeve	1
74GE	00-41111	O-Ring (ø16xø1.5)	1
75GE	00-41125	O-Ring (ø20.35xø1.78)	1
76GA	I70-601	Muffler	1
77	I100-603	Exhaust Deflector	1
	I100-604A	Air Inlet 1/4"-19PF	1
	I100-604B	Air Inlet 1/4"-19PT	
	I100-604C	Air Inlet 1/4"-18NPT	
79	I100-511	Pin	1
80C	I90-453	Spring	1
82GI	32055-WRBA-02	Pin Assembly	1
86GB	I80-422	Back Up Ring	1
87GE	00-41117	O-Ring (ø15.5xø1.5)	1
88GH	00-4157	O-Ring (ø10xø1.5)	1
※	I90-109	Tool Cover	1
※	IS90RK-YO	Repair kit: Index No- 8(2); 10(2); 12; 13; 20(2); 23; 30C(2); 86GB	
※	IS90SK	Service kit: Index No- 16; 17G; 18B(2); 19B(2); 29; 42(9); 52; 68; 69; 70	
※	01-0507B	Impulse Oil (1000c.c)	
※	01-0508B	Impulse Oil (100c.c)	

★ Pulse unit includes: IS90-400ASM-WR

Index No : 6, 7, 8, 10, 11, 12, 13, 14GB, 15, 16, 17G, 18B, 19B, 20, 21B, 22F, 23, 24, 25F, 26, 27, 28, 29, 30C, 31C, 35, 80C, 82GI, 86GB