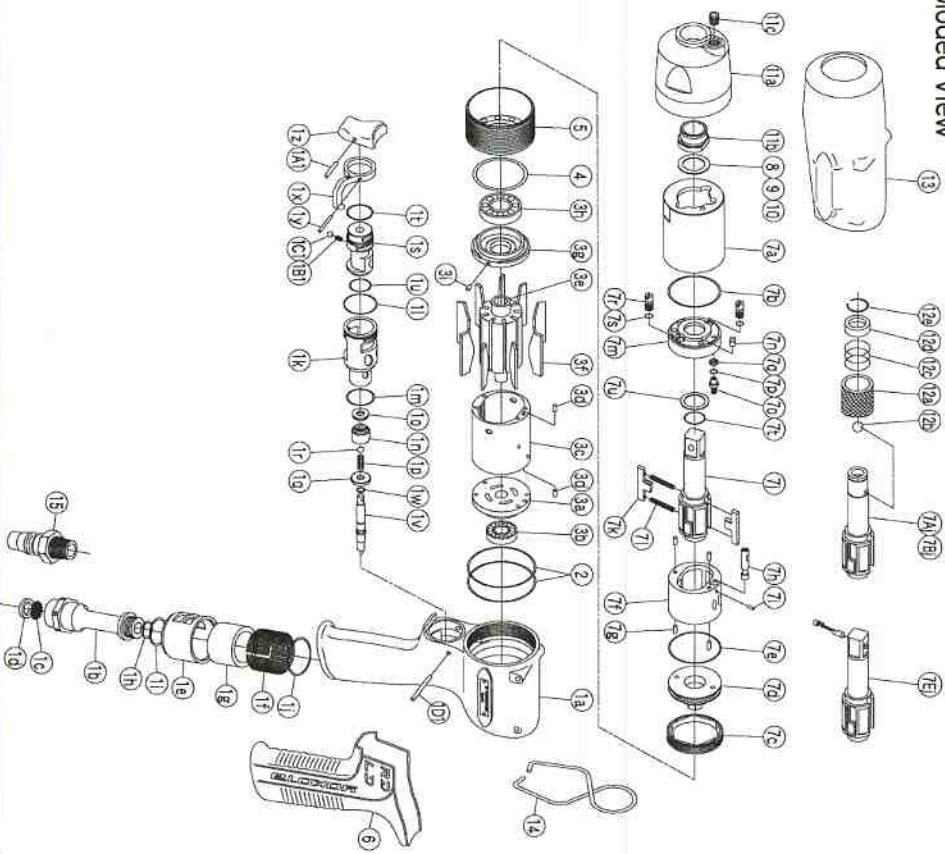


IMPULSE WRENCH

MODEL (YES.No.)	TOOL No.
YLA70 (00)	0189 0000 0000
YLA70A (00)	0189 0000 0001
YLA70B (00)	0189 0000 0002
YLA70E (00)	0189 0000 0009

Exploded View



Parts List

No.	Name of Parts	Per Set	Parts No.
1	Motor Case Assy.	1set	0189 0011 00 99
	(a) Motor Case	1	※ ↑
	Hose Joint Assy.	1set	0186 0113 00 99
	(b) Hose Joint	1	※ ↑
	(c) Strainer	1	0259 0111 00 00
	(d) Washer (7.5X11X2)	1	8042 2008 00 00
	(e) Exhaust Cover	1	0334 0016 00 00
	(f) Silencer Sheet (A)	1	0141 0032 00 01
	(g) Silencer Sheet	1	0334 0032 00 00
	(h) O - Ring	1	9010 4004 00 00
	(i) O - Ring	1	9010 4009 00 00
	(j) O - Ring (1X20X22)	1	9010 6043 00 00
	Throttle Assy.	1set	0181 0186 01 99
	(k) Throttle Bushing	1	0181 0104 00 00
	(l) O - Ring (0.7X17.8X19.2)	1	9010 6030 00 00
	(m) O - Ring (N16)	1	9010 4009 00 00
	Throttle Valve Assy.	1set	0181 0108 00 99
	(n) Throttle Valve	1	※ ↑
	(o) Rubber Pad (3.4X9.7)	1	2331 0678 00 00
	(p) Spring	1	8020 1345 00 00
	(q) Throttle Bushing Cap	1	2331 0180 00 00
	(r) Ball (3.5mm)	1	9150 2005 00 00
	(s) Reverse Valve	1	0181 0005 01 00
	(t) O - Ring (0.8X13.5X15.1)	1	9010 6031 00 00
	(u) O - Ring (N12.5)	1	9010 4006 00 00
	(v) Throttle Rod (0.5X3.7X4.7)	1	9010 6034 00 00
	(w) O - Ring (0.5X3.7X4.7)	1	9010 6034 00 00
	(x) Reverse Lever (2X1.2)	1	0158 0007 00 00
	(y) Spring Pin (1.5X1.4)	1	9250 1015 00 00
	(z) Throttle Knob (3X4)	1	0158 0153 00 00
	(A1) Spring Pin (1.5X1.4)	1	9250 1246 00 00
	(B1) Spring (1/8)	1	8020 1205 00 00
	(C1) Ball (2X22)	1	9150 3009 00 00
	(D1) Pin (JASO 1033)	2	8055 1050 00 00
2	O - Ring (2X22)	1	9011 3004 00 00
3	Motor Assy.	1set	0186 0305 00 99
	Upper Plate Assy.	1set	0186 0303 00 99
	(a) Upper Plate	1	0186 0303 00 00
	(b) Ball Bearing (697MC2)	1	9102 3001 00 00
	Cylinder Assy.	1set	0186 0304 00 99
	(c) Cylinder	2	※ ↑
	(d) Pin (2X4)	1	8673 2001 00 00
	(e) Rotor	1	0186 0305 00 00
	(f) Vane	9	0186 0306 00 00
	Lower Plate Assy.	1set	0186 0307 00 99
	(g) Lower Plate	1	0186 0307 00 00
	(h) Ball Bearing (6901CM)	1	9102 1003 00 00
	(i) Pin (2X4)	1	8673 2001 00 00
4	ST - Packing (27.2X31X0.2)	1	8011 1008 00 00
5	Upper Plate Spacer	1	0189 0311 00 00
6	Rubber Grip	1	0188 0144 00 00
7	Liner Case Assy.	1set	0189 0422 01 99
	(a) Liner Case	1	0189 0422 01 00
	(b) O - Ring (1X28.2X30.2)	1	9010 6036 00 00
	(c) Liner Cap	1	0186 0423 00 00
	(d) Liner Upper Plate	1	0186 0424 00 00
	(e) O - Ring (JASO 1026)	1	9011 3003 00 00
	Liner Assy.	1set	0186 0425 00 99
	(f) Liner	1	※ ↑
	(g) Pin FF (2X4.8 41-44 HRC)	4	8052 1045 00 00
	(h) Relief Valve	1	0186 0245 00 00
	(i) Pin (1.5X4)	1	8051 1314 00 00
	(j) Main Shaft	1	0189 0614 00 01
	(k) Blade (3.1X23)	2	0088 0719 03 00
	(l) Spring	2	8020 1349 00 00
	Liner Lower Plate Assy.	1set	0189 0425 01 99
	(m) Liner Lower Plate	1	0189 0425 00 00
	(n) Dowel Pin	1	0188 0308 00 00
	(o) Adjust Bolt (N2)	1	0188 0522 00 00
	(p) O - Ring	1	9010 4001 00 00
	(q) Back-up Ring (3.2X5X1)	1	9090 1028 00 00
	(r) Oil Plug (N2)	2	0181 0010 00 00
	(s) O - Ring (P12)	2	9010 4001 00 00
	(t) O - Ring (P12)	1	9011 7001 00 00
	(u) Back-up Ring (12X16X0.8)	1	9090 1010 00 00
8	Washer (12.5X18X0.3)	1	8041 5034 00 00
9	Washer (12.5X18X0.5)	1	8041 5011 00 00
10	Washer (12.5X18X1)	1	8041 5021 00 00
11	Hammer Case Assy.	1set	0189 0401 00 99
	(a) Hammer Case	1	0189 0401 00 00
	(b) Main Shaft Bushing	1	0189 0612 00 00
	(c) Socket Plug (1/16-27)	1	8210 4001 00 00
	Parts for YLA70A - YLA70B		
7A	Liner Case Assy.	1set	0189 0422 01 98
	(j) Main Shaft (A-type)	1	0189 0614 00 51
7B	Liner Case Assy.	1set	0189 0422 01 97
	(j) Main Shaft (B-type)	1	0189 0614 00 52
12	Bit Chuck Assy.	1set	2057 0414 00 99
	(a) Bit Chuck	1	2057 0414 00 00
	(b) Ball (1/8)	1	9150 3009 00 00
	(c) Spring (1.3.5X1.0)	1	8020 1340 00 00
	(d) Spring Washer	1	2331 0419 00 00
	(e) Retaining Ring (10X1)	1	8030 1009 00 00
	Parts for YLA70E		
7E	Liner Case Assy.	1set	0189 0422 00 96
	(j) Main Shaft Assy (E-type)	1set	0189 0614 00 99
	Standard Accessories		
13	Protector	1	0189 0029 00 00
14	Hex. Wrench (H1.5X6.5X66)	1	0188 0017 00 00
	Hex. Wrench (H5/32)	1	9610 1012 00 00

The part "※" can not be supplied individually.

So please order it as a unit of assembly shown by arrow mark (↑).

※marked parts: use one of them.



YOKOTA EUROPA BV

P.O. BOX 392 NL-1000 AJ AMSTERDAM, PHONE 020-5318900 FAX 020-5318608
 e-mail info@impulsetools.com http://www.impulsetools.com
 Hydraulic Impulse Wrenches, Impact Wrenches, Drills, Sanders, Screw Drivers, Chippers, Scales, Pumps.