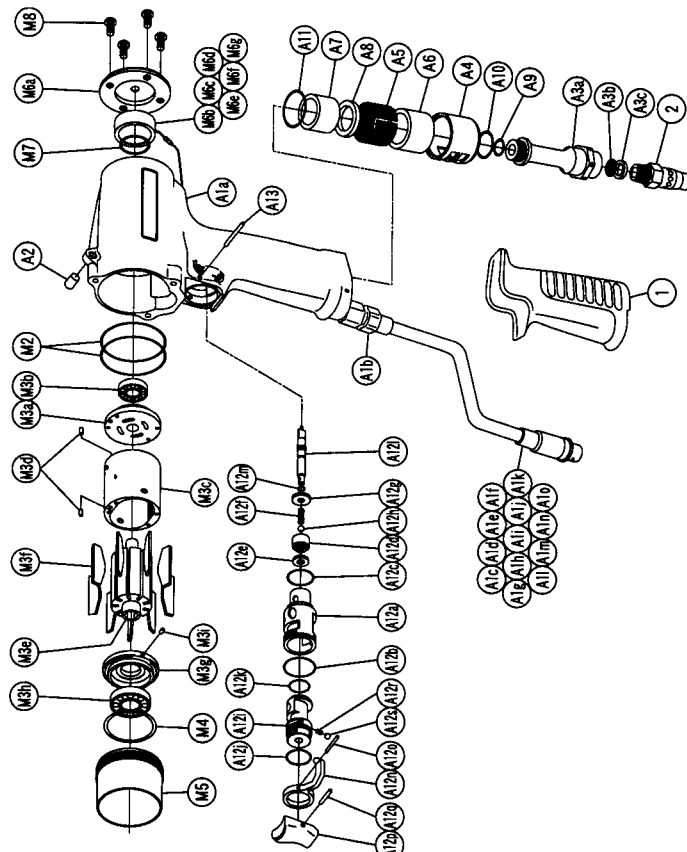


With built-in torque sensor 2 BLADE-SYSTEM WRENCH

MODEL (YES.No.)	TOOL No.
TKa70 (00)	0186 0000 0000
TKa70A (00)	0186 0000 0001

■ Exploded View of Motor Case



Parts for Motor Case

No.	Name of Parts	Per Set	Parts No.
M	Motor Case Assy.	1set	0186 0011 00 99
M1	Motor Case (1) Assy.	1set	0186 0011 00 69
A1	Motor Case (2) Assy.	1set	0186 0011 00 68
(a)	Motor Case	1	*
(b)	Holder Assy.	1set	0181 0717 00 99
(c)	Cable Assy. (DC24V)	1set	0186 0717 00 00
(d)	Connector (R05-JBBM)	1	0270 0900 00 06
(e)	Cable (820mm)	1	0450 3002 00 00
(f)	Shrinkage Tube (φ2.0mm)	1	8521 1001 00 00
(g)	Shrinkage Tube (φ2.0mm)	1	9380 5014 00 00
(h)	O-Ring (P-8)	3	9010 1048 00 00
(i)	Washer (7.3x11.1x1.5)	2	8040 1151 00 00
(j)	Lock Bolt	1	0270 0666 00 00
(k)	Shrinkage Tube (φ2.0mm)	1	9380 5014 00 00
(l)	Shrinkage Tube (φ3x8)	1	9380 5035 00 00
(m)	Shrinkage Tube (φ1.5x8)	4	9380 5028 00 00
(n)	Micro Connector (PM-10)	1	8500 2004 00 00
(o)	Shrinkage Tube (φ5x8)	1	9380 5035 00 00
(p)	Micro Connector (PM-10)	1	8500 2002 00 00
(q)	Cord Cover	1	0181 0648 00 00
A2	Spring Pin (6x10)	1	9250 1082 00 00
A3	Hose Joint Assy.	1set	0186 0113 00 99
(a)	Hose Joint	1	*
(b)	Strainer	1	0259 0111 00 00
(c)	Washer (7.5x11x2)	1	8042 2008 00 00
A4	Exhaust Cover	1	0334 0016 00 00
A5	Silencer Sheet (A)	1	0141 0032 00 01
A6	Silencer Sheet	1	0334 0032 00 00
A7	Silencer Sheet (B)	1	0188 0032 00 02
A8	Silencer Sheet (C)	1	0181 0032 00 03
A9	O-Ring (N10)	1	9010 4004 00 00
A10	O-Ring (N16)	1	9010 4009 00 00
A11	O-Ring (1x20x22)	1	9010 6043 00 00
A12	Throttle Assy.	1set	0181 0186 01 99
(a)	Throttle Bushing	1	0181 0104 00 00
(b)	O-Ring (0.7x17.8x19.2)	1	9010 6030 00 00
(c)	O-Ring (N16)	1	9010 4009 00 00
(d)	Throttle Valve Assy.	1set	0181 0108 00 99
(e)	Throttle Valve	1	*
(f)	Rubber Pad	1	2331 0678 00 00
(g)	Spring (3.4x9.7)	1	8020 1345 00 00
(h)	Throttle Bushing Cap	1	2331 0160 00 00
(i)	Ball (3.5mm)	1	9150 2006 00 00
(j)	Reverse Valve	1	0181 0005 00 00
(k)	O-Ring (0.8x13.5x15.1)	1	9010 6031 00 00
(l)	O-Ring (N12.5)	1	9010 4006 00 00
(m)	Throttle Rod	1	0181 0106 01 00
(n)	O-Ring (0.5x3.7x4.7)	1	9010 6034 00 00
(o)	Reverse Lever	1	0158 0007 00 00
(p)	Spring Pin (2x12)	1	9250 1015 00 00
(q)	Throttle Knob	1	0158 0153 00 00

The part "*" can not be supplied individually.
So please order it as a unit of assembly shown by arrow mark (†).

018600-PO408



YOKOTA EUROPA BV

P.O. BOX 382 NL-1000 AJ AMSTERDAM PHONE 020-5318800 FAX 020-5318808
e-mail info@impulsetools.com http://www.impulsetools.com

Hydraulic Impact Wrenches, Impact Wrenches, Drills, Grinders, Screw Drivers, Choppers, Saws, Pumps



With built-in torque sensor

2 BLADE-SYSTEM WRENCH

MODEL (YES.No.)	TOOL No.
TKa70 (00)	0186 0000 0000
TKa70A (00)	0186 0000 0001

Parts for Liner Case

No.	Name of Parts	Per Set	Parts No.
L	Liner Case Assy.	1set	0186 0422 00 99
L1	Liner Case	1	0186 0422 01 00
L2	O - Ring (1.78X29.87X33.43)	1	9011 2003 00 00
L3	Liner Cap	1	0186 0423 00 00
L4	Liner Upper Plate	1	0186 0424 00 00
L5	O - Ring (JASO 1026)	1	9011 3003 00 00
L6	Liner Assy.	1set	0186 0425 00 99
	(a) Liner	1	※ ↑
	(b) Pin FF (2x4.8 41~44HRC)	4	8652 1041 00 00
L7	Relief Valve	1	0186 0245 00 00
L8	Pin (1.5x4)	1	8051 1314 00 00
L9	Liner Shaft	1	0186 0796 00 00
L10	Blade	2	0088 0719 03 00
L11	Spring (3.1x23)	2	8020 1349 00 00
L12	Liner Lower Plate Assy.	1set	0186 0426 00 99
	(a) Liner Lower Plate	1	※ ↑
	(b) Pin (3x5 41~44HRC)	1	8652 1031 00 00
L13	Adjust Bolt	1	0186 0522 00 00
L14	O - Ring (N2)	1	9010 4001 00 00
L15	Back-up Ring (N2)	1	9090 2001 00 00
L16	Nylon Bushing	1	0270 0431 00 00
L17	Oil Plug	2	0181 0010 00 00
L18	O - Ring (N2)	2	9010 4001 00 00
L19	O - Ring (P12 R-ROG11003V)	1	9011 7001 00 00
L20	Back-up Ring (12X16X0.8)	1	9090 1010 00 00
3	Washer (12X15.8X4.8)	1	8040 1165 00 00
★ 4	Washer (11.5X16X0.5)	1	8041 5022 00 00
★ 5	Washer (11.5X16X0.3)	1	8041 5025 00 00

The part "※" can not be supplied individually.
So please order it as a unit of assembly shown by arrow mark (↑).
★ Marked parts may be not used, in some case.

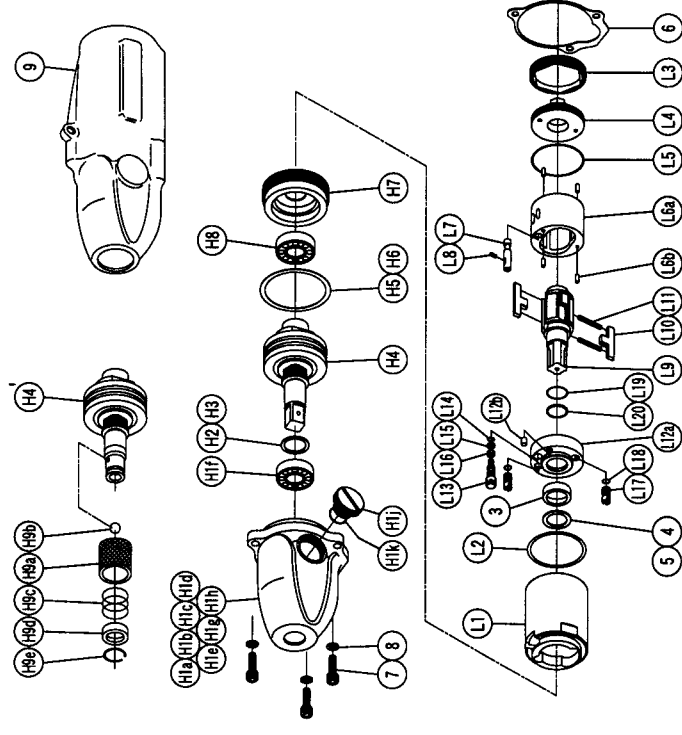
Parts for Hammer Case

No.	Name of Parts	Per Set	Parts No.
H	Hammer Case Assy.	1set	0186 0401 00 99
H1	Hammer Case Assy.(1)	1	0186 0401 00 69
(a)	Hammer Case	1	※ ↑
(b)	Core (A) Assy.	1set	※ ↑
(c)	Core (C)	1	※ ↑
(d)	Spacer (A)	1	※ ↑
(e)	Core (D) Assy.	1set	※ ↑
(f)	Ball Bearing (6801ZZ)	1	※ ↑
(g)	Set Screw (M4 X3)	1	※ ↑
(h)	Shrinkage Tubel (φ 1.5 X 8)	4	※ ↑
(i)	Micro Connector (OY-202)	1	※ ↑
	(j) Regulator Cap	1	0181 0204 00 00
(k)	O - Ring (N10)	1	9010 4004 00 00
★ H2	ST-Packing (12.5X16X0.1)	1	8011 1084 00 00
★ H3	ST-Packing (12.5X16X0.2)	1	8011 1011 00 00
H4	Main Shaft Assy.	1set	0186 0614 00 99
★ H5	C-Packing (35X40.5X0.1)	1	8010 1291 00 00
★ H6	C-Packing (35X40.5X0.2)	1	8010 1292 00 00
H7	Bearing Case	1	0186 0650 00 00
H8	Ball Bearing (6802ZZ)	1	9100 5037 00 00
6	S-Packing	1	0186 0003 00 00
7	Hexagon Socket Bolt(M4 X12)	3	8070 3059 00 00
8	Spring Washer (M4)	3	9200 3004 00 00
Parts for TKa70A			
H'	Hammer Case Assy.	1set	0186 0401 00 89
H1'	Hammer Case (1) Assy.	1set	0186 0401 00 69
H4'	Main Shaft Assy. (A-type)	1set	0186 0614 00 89
H8	Bit Chuck Assy.	1set	2057 0414 00 99
(a)	Bit Chuck	1	2057 0414 00 00
(b)	Ball (1/8)	1	9150 3009 00 00
(c)	Spring (13.5X10)	1	8020 1340 00 00
(d)	Spring Washer	1	2331 0419 00 00
(e)	Retaining Ring (10X1)	1	8030 1009 00 00
Standard Accessories			
	TF Pin (2x90)	1	8051 8001 00 00
	Hanger Ring	1	0217 0018 00 00
9	Protector	1	0186 0029 00 00

The part "※" can not be supplied individually.
So please order it as a unit of assembly shown by arrow mark (↑).
★ Marked parts may be not used, in some case.

018600-PC008

Exploded View of Liner Case and Hammer Case



YOKOTA EUROPA BV
 P.O. BOX 392 NL - 1000 AA AMSTERDAM - PHONE 020-5318800 - FAX 020-5418805
 e-mail: info@impulsetools.com - http://www.impulsetools.com
 Hydraulic, Impact Wrenches, Drills, Compressors, Screw Drivers, Chisels, Sclawers, Pliers.