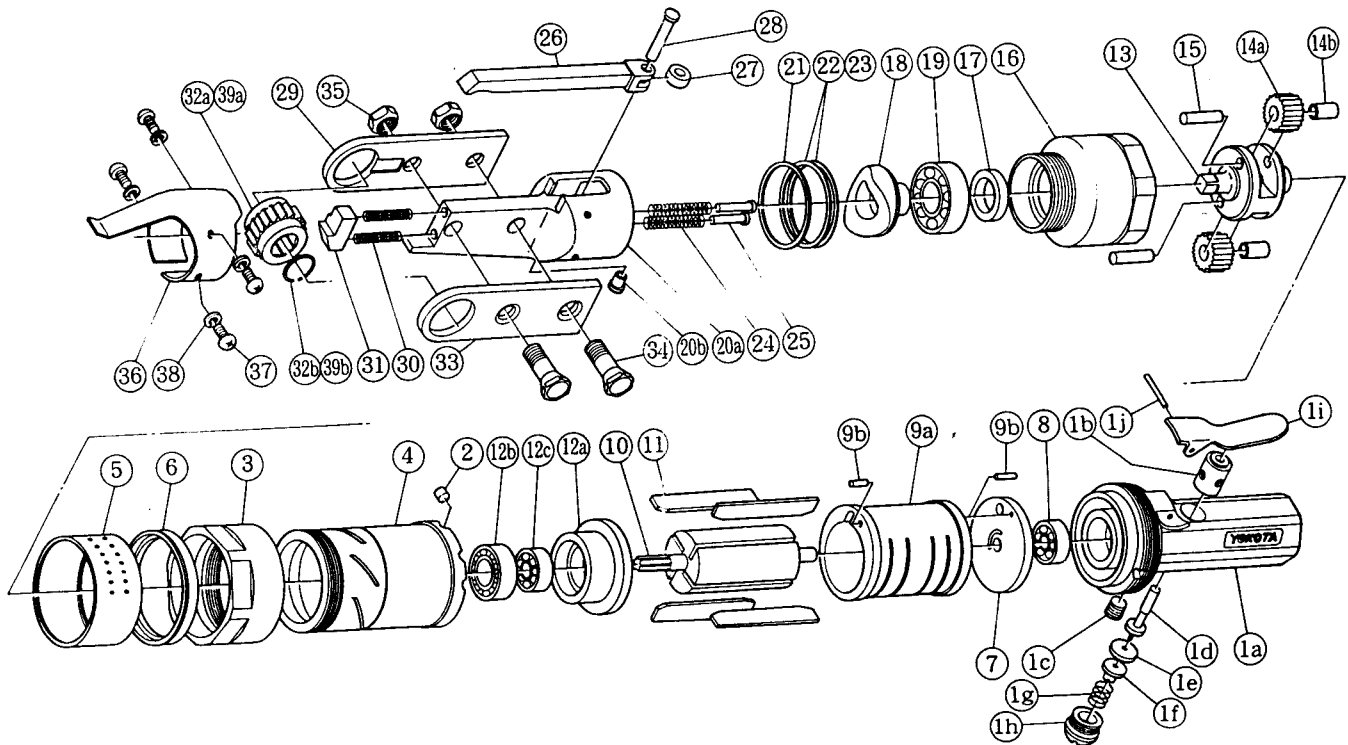


RATCHET WRENCH

MODEL (YES. NO.)	TOOL NO.
YRW - 10N (00)	4032 0000 00 00

EXPLODED VIEW



YOKOTA EUROPA BV

P.O. BOX 392 NL - 1000 AJ AMSTERDAM PHONE 020 - 625 29 53 FAX 020 - 625 35 69

Hydraulic Impulse Wrenches, Impact Wrenches, Drills, Grinders, Screwdrivers, Chippers, Scalars, Pumps.

RATCHET WRENCH

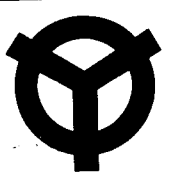
MODEL (YES.NO.)	TOOL NO.
YRW - 10N (00)	4032 0000 00 00

PARTS LIST

No.	Name of Parts	Per Set	Parts No.	No.	Name of Parts	Per Set	Parts No.
1	Handle Assy.	1set	4032 0002 00 99	21	Washer (40.2 × 44 × 1)	1	8040 1130 00 00
	(a) Handle	1	4032 0002 00 00	22	Washer (40.2 × 44 × 0.1)	1	8040 1146 00 00
	(b) Throttle Bushing	1	4032 0104 00 00	23	Washer (40.2 × 44 × 0.2)	2	8040 1129 00 00
	(c) Socket Plug (1/8)	1	8210 2001 00 00	24	Spring (6 × 38)	2	8020 1271 00 00
	Throttle Rod Assy.	1set	4032 0106 00 99	25	Spring Guide	2	4030 0510 00 00
	(d) Throttle Rod	1	* ↑	26	Latch	1	4032 1162 00 00
	(e) Throttle Valve	1	4032 0108 00 00	27	Cam Roller	1	4021 1115 00 00
	(f) Throttle Nut	1	4032 0148 00 00	28	Cam Roller Shaft	1	4032 1117 00 00
	(g) Spring (9 × 18)	1	8020 1272 00 00	29	Side Plate A (R)	1	4032 1159 00 01
	(h) Throttle Cap	1	4032 0107 00 00	30	Spring (4.7 × 32.5)	2	8020 1273 00 00
	(i) Throttle Lever	1	4032 0110 00 00	31	Stopper	1	4032 0314 00 00
(j) Spring Roll Pin (3 × 22)	1	9250 1054 00 00	32	Chuck Gear H17 Assy.	1set	4032 0712 00 99	
2	Lock Rod	1	4032 0066 00 00		(a) Chuck Gear H17	1	* ↑
3	Motor Case Joint	1	4032 0015 00 00		(b) Retaining Ring (19.5 × 0.8)	1	8030 1071 00 00
4	Motor Case	1	4032 0011 00 00	33	Side Plate B (L)	1	4032 1160 00 02
5	Exhaust Cover	1	4032 0016 00 00	34	Lock Bolt	2	4030 0666 00 00
6	Exhaust Cap	1	4032 0071 00 00	35	Lock Nut	2	4030 0819 00 00
7	Upper Plate	1	4032 0303 00 00	36	Latch Spring	1	4030 1161 00 00
8	Ball Bearing (# 627)	1	9100 1008 00 00	37	Screw (M5 × 8)	4	9410 2008 00 00
9	Cylinder Assy.	1	4032 0304 00 99	38	Spring Washer (M5)	4	9200 3005 00 00
	(a) Cylinder	1	* ↑				
	(b) Spring Roll Pin (3 × 8)	2	9250 1045 00 00	Option Parts			
10	Rotor	1	4032 0305 00 00	39	Chuck Gear H14 Assy.	1set	4032 0712 01 99
11	Vane	4	4032 0306 00 00		(a) Chuck Gear H14	1	* ↑
12	Lower Plate Assy.	1set	4032 0307 00 99		(b) Retaining Ring (14.8 × 0.8)	1	8030 1068 00 00
	(a) Lower Plate	1	4032 0307 00 00				
	(b) Ball Bearing (# 608)	1	9100 1004 00 00				
	(c) Ball Bearing (# EE - 4)	1	9100 6003 00 00				
13	Main Shaft	1	4032 0614 00 00				
14	Planet Gear Assy.	2set	4032 0607 00 99				
	(a) Planet Gear	1	* ↑				
	(b) Dry Bearing (MB0610DU)	1	9140 0015 00 00				
15	Pin (6 × 19)	2	8051 1216 00 00				
16	Gear Case	1	4032 0603 00 00				
17	Washer (17 × 26 × 4)	1	8041 6008 00 00				
18	Cam	1	4032 0707 00 00				
19	Ball Bearing (# EN - 15)	1	9101 8001 00 00				
20	Crank Case Assy.	1	4032 0777 00 99				
	(a) Crank Case	1	* ↑				
	(b) Ball Cup (1/4)	1	9680 1002 00 00				

The part marked "*" can not be supplied individually. So please order it as a unit of assembly shown by arrow mark (↑).

P9302



YOKOTA EUROPA BV

P.O. BOX 392 NL - 1000 AJ AMSTERDAM PHONE 020 - 625 29 53 FAX 020 - 625 35 69

Hydraulic Impulse Wrenches, Impact Wrenches, Drills, Grinders, Screwdrivers, Chippers, Scalars, Pumps.