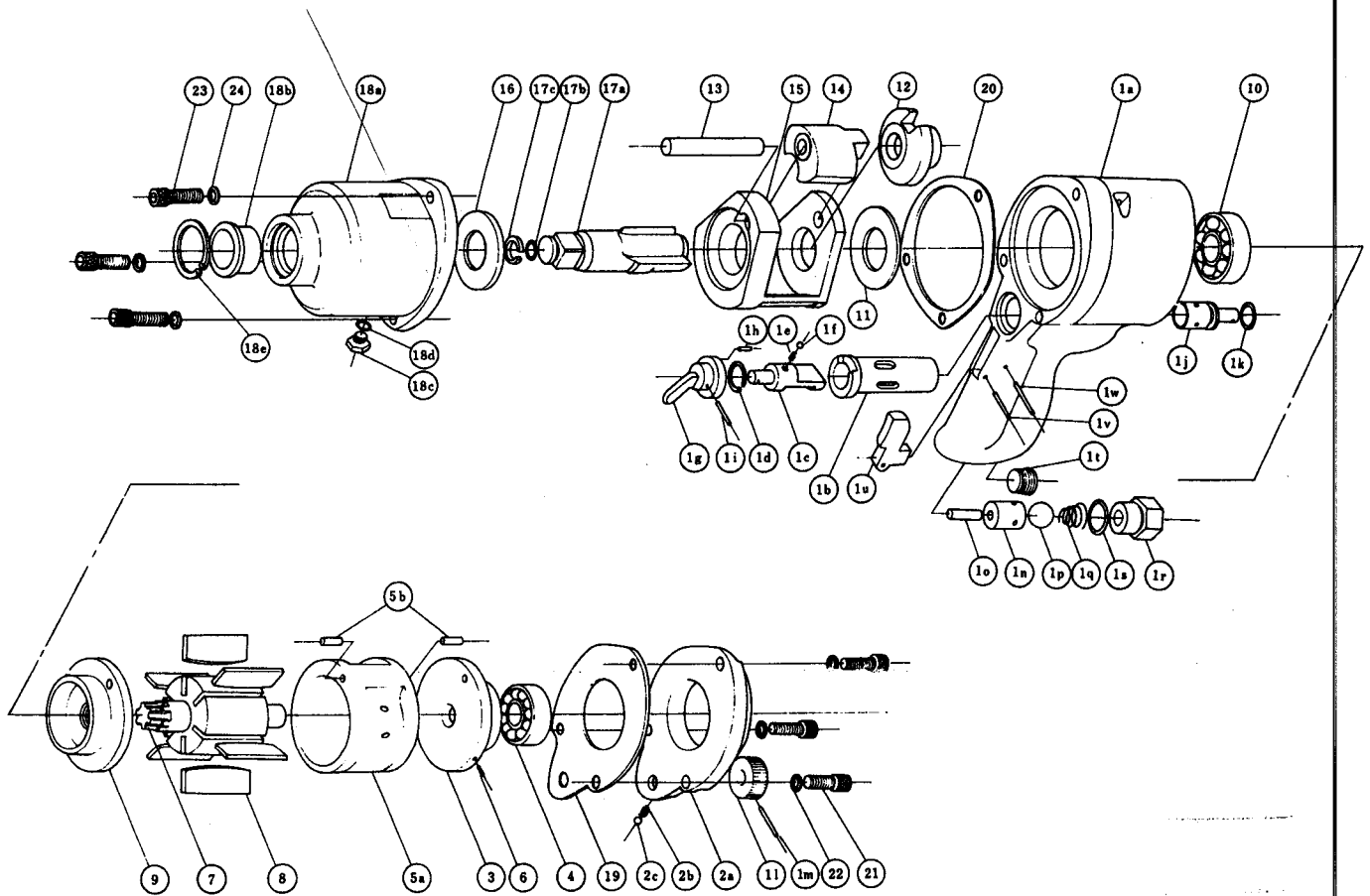


# YOKOTA

## MODEL: V-160P IMPACT WRENCHES (YES-02)

Tool No. 0310 0000 02 00

### ● EXPLODED VIEW



# YOKOTA EUROPA BV

DE RUYTERKADE 142 AMSTERDAM PHONE (020) 25 29 53 TELE XNR 14022

IMPACT WRENCHES, DRIVERS, GRINDERS, HAMMERS, DRILLS, FLUX CHIPPERS, TAPPERS, AIR SCALERS, PUMPS.

# YOKOTA

## MODEL: V-160P IMPACT WRENCHES (YES-02)

### ● PARTS LIST

Tool No. 0310 0000 02 00

Index No.	Name of Parts	Per Set	Parts No.				Index No.	Name of Parts	Per Set	Parts No.			
1	Motor Case Assy.	1set	0310	0011	01	99	5	Cylinder Assy.	1set	0310	0304	00	99
	(a) Motor Case	1	0310	0011	01	00		(a) Cylinder	1	0310	0304	00	00
	(b) Reverse Bushing	1	0310	0004	01	00	(b) Spring Roll pin (4X10)	2	9250	1066	00	00	
	(c) Reverse Valve	1	0310	0005	01	00	6	Spring Roll Pin (3X6)	1	9250	1043	00	00
	(d) Snap Ring (IRTW-14)	1	9040	3004	00	00	7	Rotor	1	0310	0305	01	00
	(e) Spring (4X6)	1	8020	1022	00	00	8	Vane	6	0310	0306	00	00
	(f) Ball (M4)	1	9150	1005	00	00	9	Lower Plate	1	0310	0307	00	00
	(g) Reverse Lever	1	0310	0007	00	00	10	Ball Bearing (# 6202V)	1	9100	2012	00	00
	(h) Spring Roll Pin (2X6)	1	9250	1011	00	00	11	Upper Washer	1	0310	0407	00	00
	(i) Spring Roll Pin (2X12)	1	9250	1015	00	00	12	Driver	1	0310	0405	01	00
	(j) Regulator Valve	1	0310	0202	01	00	13	Hammer Pin	1	0310	0404	00	00
	(k) "O" Ring (P.10A)	1	9010	1009	00	00	14	Hammer	1	0310	0403	00	00
	(l) Regulator Lever	1	0310	0203	00	00	15	Hammer Frame	1	0310	0402	00	00
	(m) Spring Roll Pin (2X20)	1	9250	1021	00	00	16	Lower Washer	1	0310	0408	00	00
	(n) Throttle Bushing	1	0309	0104	00	00	17	S-Anvil Assy.	1set	0310	0410	01	99
	(o) Pin (4X27)	1	8051	1152	00	00		(a) S-Anvil	1	0310	0410	00	21
	(p) Ball (1/2)	1	9150	4008	00	00		(b) "O" Ring (No.6)	1	9010	3005	00	00
	(q) Conical Spring (11.5X14X20)	1	8020	3029	00	00		(c) Stopper Ring (1/2sq.)	1	0208	0416	00	00
	(r) Hose Joint	1	0012	0113	00	00		18	Hammer Case Assy.	1set	0310	0401	00
	(s) "O" Ring (P12.5)	1	9010	1012	00	00	(a) Hammer Case		1	0310	0401	00	00
(t) Socket Oil Plug (1/4)	1	8210	1002	00	00	(b) Anvil Bushing	1		0310	0409	00	00	
(u) Throttle Lever	1	0310	0110	00	00	(c) Hexagon Oil Plug (M6)	1		8230	1001	00	00	
(v) Pin (3X19)	1	8051	1105	00	00	(d) "O" Ring (No.3)	1		9010	3003	00	00	
(w) Spring Roll Pin (3X25)	1	9250	1056	00	00	(e) Snaq (IRTW-28)	1	9040	3014	00	00		
2	Motor Case Cover Assy.	1set	0310	0001	00	99	19	S-Packing (A)	1	0310	0003	00	01
	(a) Motor Case Cover	1	0310	0001	00	00	20	S-Packing (D)	1	0310	0003	00	04
	(b) Spring (4X6)	1	8020	1022	00	00	21	Hexagon Socket Bolt (M5X18)	3	8070	3052	00	00
	(c) Ball (M4)	1	9150	1005	00	00	22	Spring Washer (M5)	3	9200	3005	00	00
3	Upper Plate	1	0310	0303	00	00	23	Hexagon Socket Bolt (M6X20)	3	8070	3034	00	00
4	Ball Bearing (# 6201V)	1	9100	2011	00	00	24	Spring Washer (M6)	3	9200	3006	00	00



# YOKOTA EUROPA BV

DE RUYTERKADE 142 AMSTERDAM PHONE (020) 25 29 53 TELEX NR 14022

IMPACT WRENCHES, DRIVERS, GRINDERS, HAMMERS, DRILLS, FLUX CHIPPERS, TAPPERS, AIR SCALERS, PUMPS.