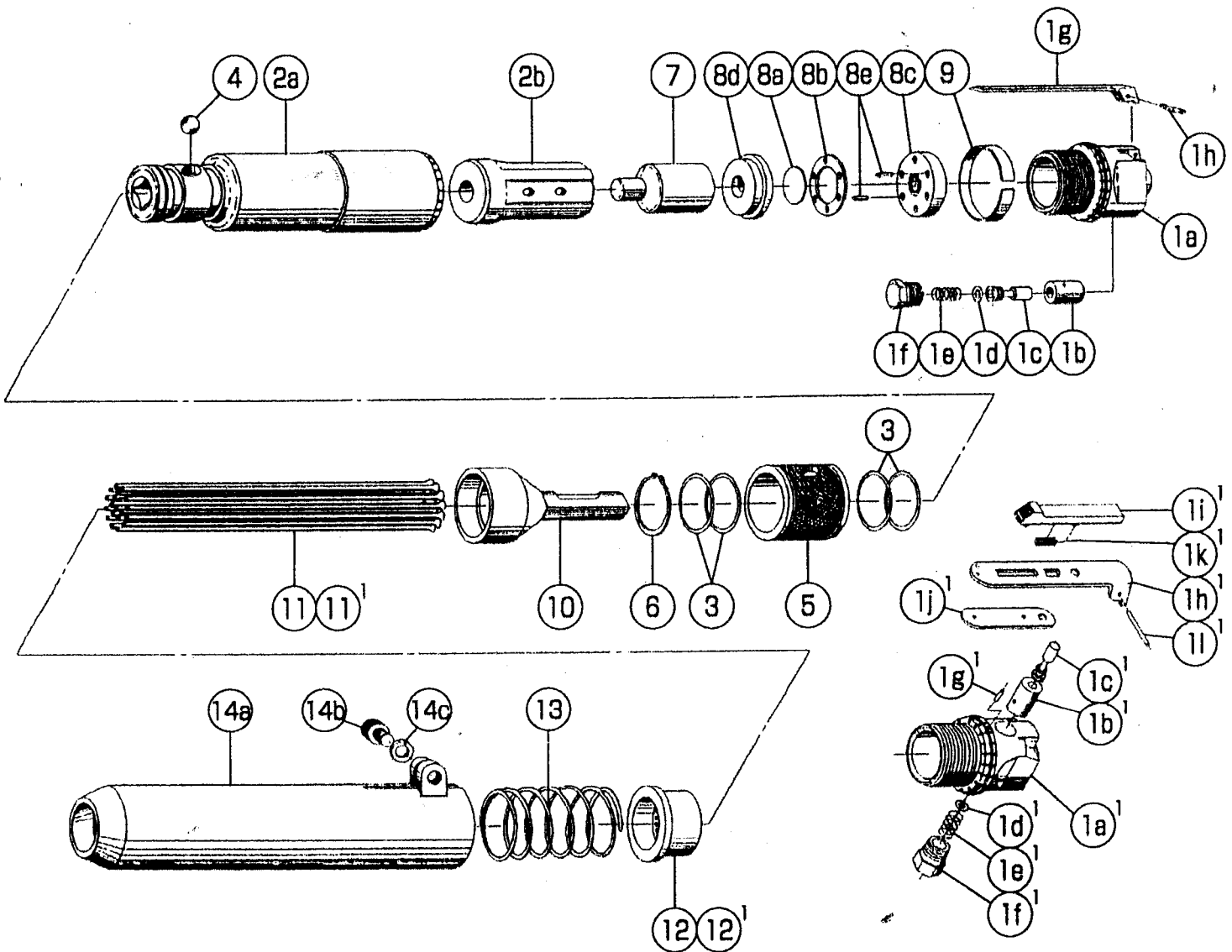


## NEEDLE SCALER

MODEL (YES.No.)	TOOL No.
F-25N (04)	6203 0000 0400

### Exploded View



# YOKOTA EUROPA BV

P.O. BOX 592 NL-1000 AJ AMSTERDAM PHONE 020-5318800 FAX 020-5318808  
 e-mail info@impulsetools.com http://www.impulsetools.com

# Parts List

No.	Name of Parts	Per Set	Parts No.
1	Cylinder Cap Assy.	1set	6201 0801 02 99
	(a) Cylinder Cap	1	6201 0801 01 00
	(b) Throttle Bushing	1	6201 0104 01 00
	Throttle Rod Assy.	1set	6205 0106 00 99
	(c) Throttle Rod	1	* ↑
	(d) O - Ring (No.3)	1	9010 3021 00 00
	(e) Spring (8×16)	1	8020 1066 00 00
	(f) Throttle Cap	1	6201 0107 00 00
	(g) Throttle Lever	1	0004 0110 01 00
(h) Throttle Lever Shaft	1	6206 0158 00 00	
2	Cylinder Body Assy.	1set	6201 0808 02 99
	(a) Cylinder Body	1	6201 0808 02 00
	(b) Piston Sleeve	1	6201 0811 00 00
3	O - Ring (P24)	4	9010 1021 00 00
4	Ball (7/16 S)	1	9150 3007 00 00
5	Chisel Cover	1	6201 0824 01 00
6	Snap Ring (STW-30)	1	9040 2011 00 00
7	Piston	1	6201 0809 00 00
8	Main Valve Assy.	1set	6201 0803 00 99
	(a) Main Valve	1	6201 0803 00 00
	(b) Main Valve Case	1	6201 0804 00 00
	(c) Upper Main Valve	1	6201 0806 00 00
	(d) Lower Main Valve	1	6201 0807 00 00
	(e) Pin (2.8×11)	2	8051 1090 00 00
9	Lock Ring	1	4001 0815 00 00
10	Needle Shank	1	6203 0826 02 00
11	Needle (3°)	19	6203 0827 00 00

No.	Name of Parts	Per Set	Parts No.
12	Needle Flange (3°)	1	6203 0829 02 00
13	Spring (38×83)	1	8020 1122 00 00
14	Needle Cover Assy.	1set	6023 0828 01 99
	(a) Needle Cover	1	* ↑
	(b) Hexagon Bolt (M8×20)	1	8070 3042 00 00
	(c) Spring Washer (M8)	1	9200 3008 00 00
Standard Accessories			
	Touch Joint (1/4-02)	1	9690 0002 00 00
	Hexagon Wrench (H6)	1	9610 1007 00 00
Optional Parts			
11'	Needle (B) (2°)	35	6203 0827 00 02
12'	Needle Flange (B) (2°)	1	6203 0829 00 02
1'	Cylinder Cap Assy.	1set	6203 0801 01 99
	(a) Cylinder Cap	1	6203 0801 00 00
	(b) Throttle Bushing	1	6201 0104 00 00
	Throttle Rod Assy.	1set	6205 0106 00 99
	(c) Throttle Rod	1	6205 0106 00 00
	(d) O - Ring (No.3)	1	9010 3021 00 00
	(e) Spring (8×16)	1	8020 1066 00 00
	(f) Throttle Cap	1	6201 0107 00 00
	(g) RR Pin (2.5×12)	1	8051 5001 00 00
	Throttle Lever (A) Assy.	1	6203 0110 00 99
	(h) Throttle Lever (A)	1	* ↑
	(i) Throttle Lever (B)	1	* ↑
	(j) Throttle Lever (C)	1	* ↑
	(k) Spring (4.5×15)	1	* ↑
(l) Spring Pin (3×22)	1	9250 1054 00 00	

The part "\*" can not be supplied individually.

So please order it as a unit of assembly shown by arrow mark (↑).