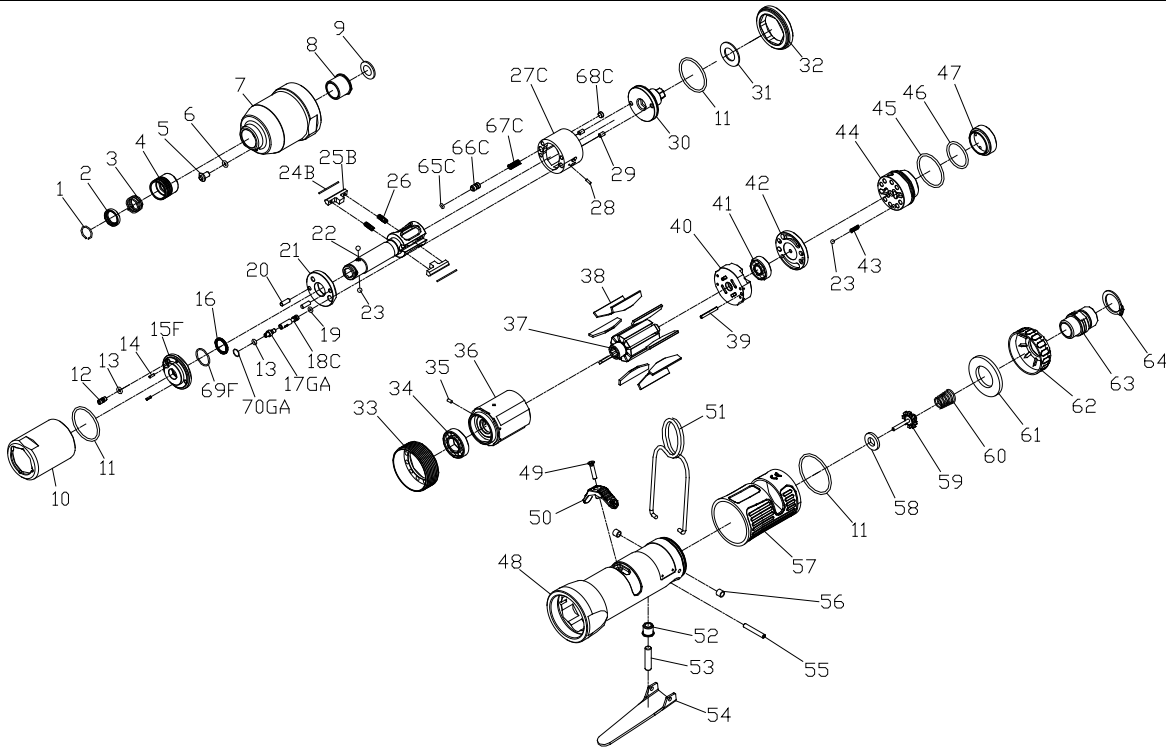


RRI-50SA IMPULSE WRENCH



Edition:07A

Index No.	Part No.	Description	Q'ty	Index No.	Part No.	Description	Q'ty
1	757-026	Anvil Collar	1	40	I50S-305	Rear Plate	1
2	I40SD-419	Hold Spacer	1	41	00-2356	Ball Bearing	1
3	I40SD-418	Spring	1	42	I40S-310	Air Inlet Plate	1
4	I40SD-417	Quick Change Hold	1	43	305F-034	Spring	1
5	I100-410	Plug	1	44	I40S-502	F/R Valve	1
6	00-4153	O-Ring	1	45	00-41146	O-Ring	1
7	I40S-201	Front Housing	1	46	00-41125	O-Ring	1
8	I40S-202	Bushing	1	47	I40S-309	Seat	1
9	I40S-424	Washer	1	48	I40S-101B	Motor Housing	1
10	I40S-401	Pulse Cylinder Housing	1	49	00-0507	Screw	1
11	00-41127	O-Ring	3	50	I40S-503	Regulator Knob	1
12	I70-410	Oil Plug	1	51	I40S-102	Hanger	1
13	00-41113	O-Ring	2	52	I40S-509	Bushing	1
14	00-3318	Spring Pin	2	53	I40S-510	Pin	1
15F	I40S-403-B	Front Plate Cover	1	54	I40S-504	Trigger	1
16	00-2602	X-Ring	1	55	00-3306	Spring Pin	1
17GA	I80-411	Adjust Screw	1	56	I40S-108	Bushing	2
18C	IS40S-412-B	Valve	1	57	I40S-103	Housing Rubber	1
19	00-41130	O-Ring	1	58	I40S-508	Bushing	1
20	00-3435	Pin	2	59	305C-021	Valve Stem	1
21	I40S-408	Front Plate	1	60	I40S-507	Spring	1
22	I40SD-405	Main Shaft	1	61	I40S-601	Muffler	1
23	00-3813	Steel Ball	3	62	I40S-603	Exhaust Deflector	1
24B	I40S-452	Roller	2		I40S-604A	Air Inlet 1/4"PF-19	
25B	I40S-406-B	Drive Blade	2	63	I40S-604B	Air Inlet 1/4"PT-19	1
26	I40S-407	Spring	2		I40S-604C	Air Inlet 1/4"NPT-18	
27C	I40S-404-B	Pulse Cylinder	1	64	00-3509	Snap Ring	1
28	00-3436	Pin	1	65C	00-41173	O-Ring	1
29	00-3407	Pin	2	66C	IS40S-421	Pressure Valve	1
30	I40S-415	Rear Plate	1	67C	I40S-453	Spring	1
31	I40S-423	Washer	1	68C	I40S-454	Block Cap	1
32	I40S-402	Lock Nut	1	69F	I40-409	Back Up Ring	1
33	I40S-306	Lock Nut	1	70GA	I80-422	Back Up Ring	1
34	00-2348	Ball Bearing	1	✳	I50SDRK	Repair kit :Index No-	
35	00-3324	Spring Pin	1			11(2);13(2);16;26(2);65C;69F	
36	I40S-302	Cylinder	1	✳	I50SDSK	Service kit :Index No-	
37	I40S-303	Rotor	1			21; 22;24B(2);25B(2); 30;	
38	I40S-304	Rotor Blade	9			38(9)	
39	00-3326	Spring Pin	1	✳	I40-451	58; 59; 60	
						Impulse Oil	

★ Pulse unit includes:

Index No : 10,11,12,13,14,15F,16,17GA,18C,19,20,21,22,24B,25B,26,27C,28,29,30,32,65C,66C,67C,68C,69F,70GA