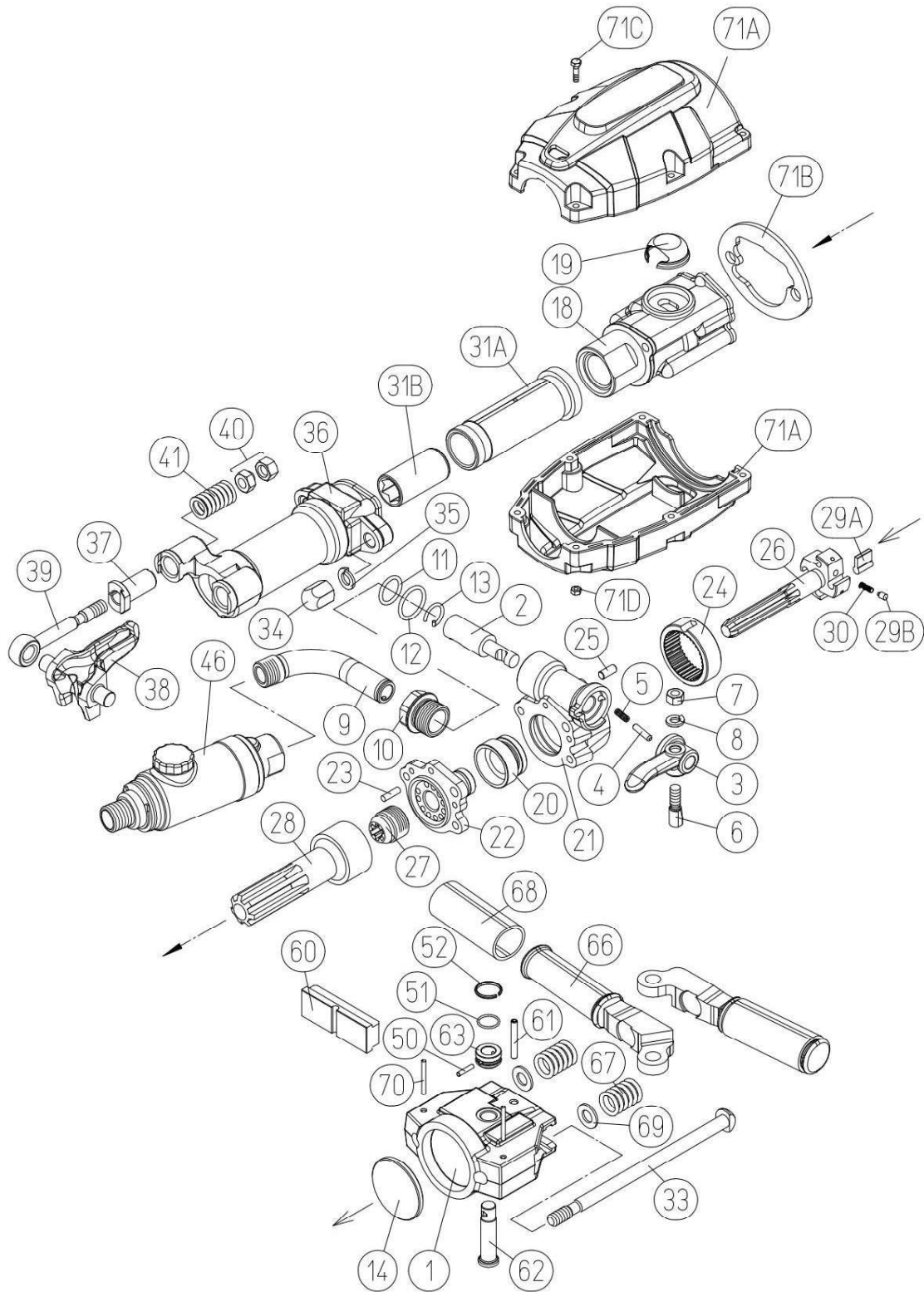


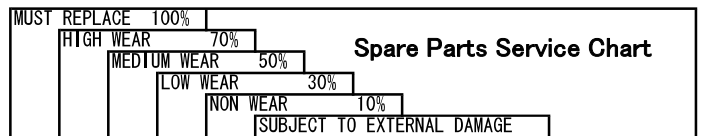
TJ-15SV

Parts List

Exploded View



TJ-15SV



Symbol No.	Parts No.	Q'ty Req.	Description						
1	430115A00	1	Back Head						X
2	430101A40	1	Throttle Valve						X
3	430101A50	1	Throttle Valve Handle						X
4	130403002	1	Throttle Valve Plunger						A
5	130803001	1	Throttle Valve Spring						A
6	430101A70	1	Throttle Valve Bolt						A
7	134401010	1	Hex Nut (M10)						A
8	131301010	1	Spring Washer (M10)						A
9	430101B00	1	Air Connection Tube (PT)						X
10	430101B31	1	Air Connection Nut						X
11	131101023	1	O-Ring P-24		X				
12	131101030	1	O-Ring P-30		X				
13	130803004	1	Air Connection Clamp		X				
14	430115Y50	1	Spacer						X
18	430101C80	1	Cylinder						X
19	430101P60	1	Exhaust Cap		A				
20	430101F80	1	Valve					X	
21	430101F9B	1	Valve Chest CP						X
22	430101G20	1	Valve Guide						X
23	130403001	1	Valve Knock						X
24	430101G60	1	Ratchet		X				
25	130409001	1	Ratchet Key						A
26	430101H01	1	Rifle Bar						X
27	430101H10	1	Rifle Nut		X				
28	430101E50	1	Piston		X				
29A	430101H20	4	Rotation Pawl		X				
29B	136303002	4	Pawl Plunger						X
30	130803006	4	Pawl Plunger Spring		X				
31	430101H5A	1	Rotation Sleeve (S) CP (3/4X3-1/4)					X	
	430102H5A	(1)	Rotation Sleeve (S) CP (7/8X3-1/4)					X	
	430107H6A	(1)	Rotation Sleeve (L) CP (7/8X4-1/4)					X	
31A	430101H50	(1)	Rotation Sleeve(S) (3-1/4)					X	
	430106H60	(1)	Rotation Sleeve(L) (4-1/4)					X	
31B	430101H70	(1)	Sleeve Bushing (S) (3/4X3-1/4)		X				
	430102H70	(1)	Sleeve Bushing (S) (7/8X3-1/4)		X				
	430107H80	(1)	Sleeve Bushing (L) (7/8X4-1/4)		X				
33	131503001	2	Through Bolt					X	
34	430101W10	2	Through Bolt Nut					A	
35	131303032	2	Through Bolt Washer W1/2					A	
36	430101W60	1	Front Head (S) (3-1/4)						X
	430106W70	(1)	Front Head (L) (4-1/4)						X
37	430101W80	2	Front Head Bushing		X				
38	430101K90	1	Steel Holder (3/4)					X	
	430102K90	(1)	Steel Holder (7/8)					X	
39	430101L00	2	Steel Holder Bolt					A	
40	430101M30	2	Steel Holder Nut					A	
41	130803007	2	Steel Holder Spring					A	
46	430101V0J	1	Line Oiler CP (LO-150)						X
50	130400043	1	Parallel Pin 4X19.8						X
51	131117018	1	O-Ring AS568-018		X				
52	130803144	1	Socket Retaining Ring						X
60	410136D60	1	Back Head Cap				X		
61	130606044	1	Spring Pin 6X44						X
62	410136A81	1	Center Pin						X
63	410136C90	1	Center Pin Ring						X
66	430115B60	2	Handle						X
67	130801064	2	Handle Spring				X		
68	136601010	2	Rubber Grip						X
69	131307013	2	Plain Washer W1/2						X
70	130604040	2	Spring Pin 4X40						X
71A	430101Y10	1	muffler(Pair)						X
71B	136301070	1	muffler Bushing						X
71C	132405240	6	Screw W/Washer M5X40						X
71D	134601005	6	Nylon Nut M5		A				

This service chart is a guide to expectant life of component parts. The replacement levels are based on average tool usage over a one year period.

Example : For 10 tools in use : 10 must —replace items will be required per year, 7 high wear items, etc.

Note : Quantities must be increased if the tool is in more service or continuous usage.

LEGEND

X— Type of wear, if no other comments apply.
 A— Easily lost or damaged during disassembly and reassembly.