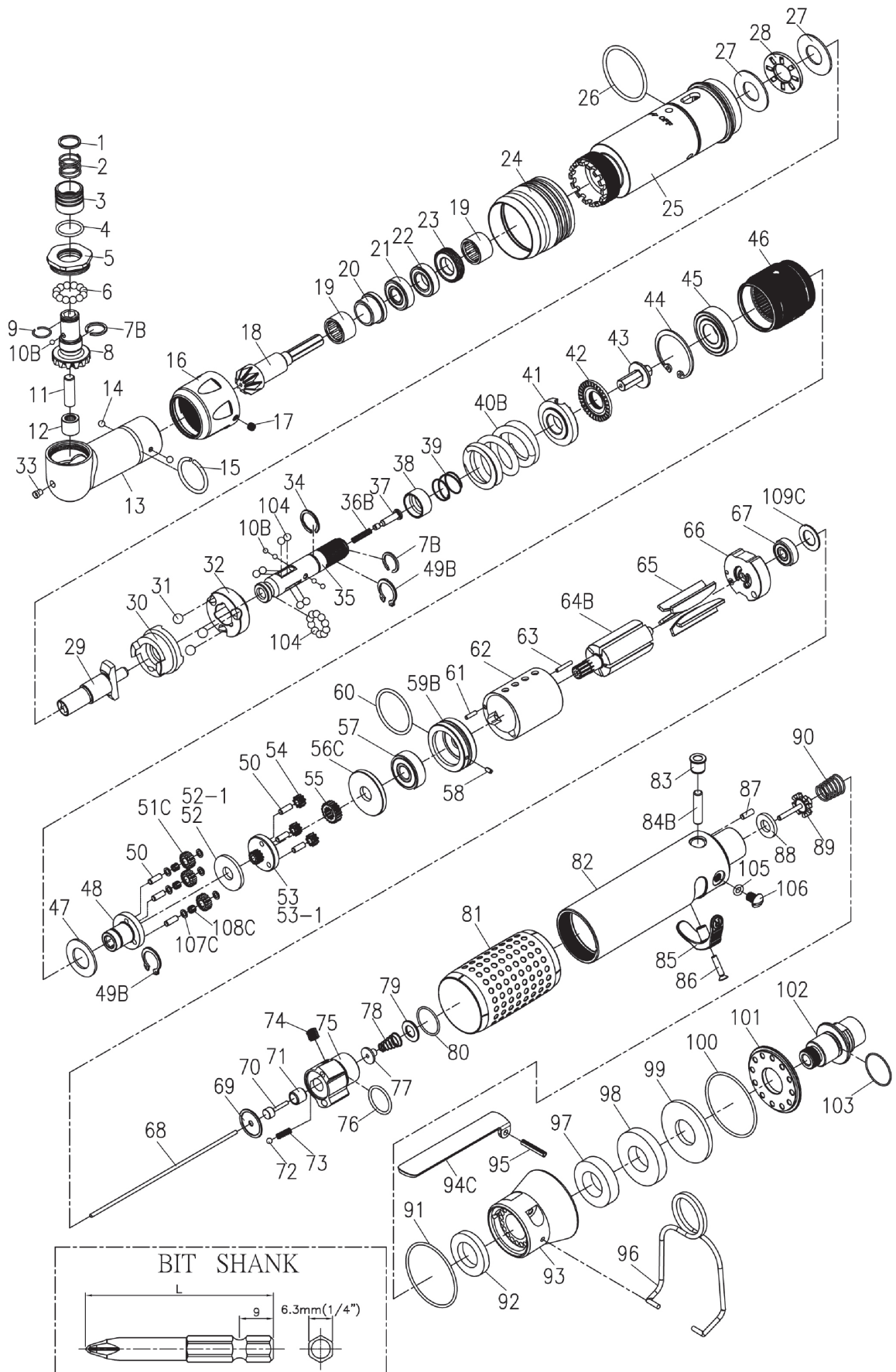


RRI-SA30710

SCREWDRIVER (ANGLE TYPE)

EDITION: C



RRI-SA30710 SCREWDRIVER (ANGLE TYPE)

EDITION: C

Index No.	Part No.	Description	Q'ty
1	B20S-415	Spring Washer	1
2	B20S-418	Spring	1
3	B20S-417	Quick Change Holder	1
4	00-41175	O-Ring (Ø13 x Ø1,5)	1
5	CS30R-706	Lock Nut	1
6	00-3824	Steel Ball (Ø4)	12
7B	B20S-428A	Anvil Collar A	2
8	B30R-705B	Spiral Bevel Gear	1
9	B20S-428B	Anvil Collar B	1
10B	00-3835	Steel Ball (Ø2,5)	5
11	00-3457	Pin (Ø6 x 25L)	1
12	00-2418	Needle Bearing (BK0609)	1
13	CS30R-701	Angle Housing	1
14	00-3826	Steel Ball (Ø3)	2
15	CS20R-708	Anvil Collar	1
16	CS30R-702	Lock Nut	1
17	00-0605	Screw (M4 x 4L)	1
18	B30R-704	Spiral Bevel Gear	1
19	00-2415	Needle Bearing (HK1210)	2
20	CS30R-703	Bushing	1
21	00-2372	Ball Bearing (698Z)	1
22	00-2380	Ball Bearing (6800Z)	1
23	CS30R-709	Lock Nut	1
24	B30S-207	Adjusting Cover	1
25	B30R-201	Clutch Housing	1
26	00-41226	O-Ring (Ø29 x Ø2)	1
27	00-1516	Washer (Ø16 x Ø26 x 1t)	2
28	00-2804	Thrust Bearing (NTB122601)	1
29	B30R-405	Anvil	1
30	B30S-425	Clutch Ring	1
31	00-3812	Steel Ball (7/32")	3
32	B30S-433	Spring Seat	1
33	00-4603	Grease Fitting	1
34	B20S-428C	Anvil Collar C	1
35	B30S-416	Transmission Shaft	1
36B	B30-524	Spring	1
37	B30S-527	Piston	1
38	B30S-449	Control Ring	1
39	B20S-427	Spring	1
40B	B30S-429B	Spring	1
41	B30S-431	Adjusting Lock Ring	1
42	B30S-430	Adjusting Nut	1
43	B30S-421	Connecting Shaft	1
44	00-3113	Snap Ring (R28)	1
45	00-2305A	Ball Bearing (6001)	1
46	C20S-440	Internal Gear	1
47	C20S-441	Washer	1
48	C30S-442A	Front Gear Cage A	1
49B	00-3507	Snap Ring (S12)	2
50	00-3424	Pin (Ø3 x 8L)	6
51C	C30S-443A	Planet Gear A	3
52-1	C20S-444B	Washer B (2 m/m)	1
53-1	C20S-452B	Rear Gear Cage B Assem.	1
54	C20S-443A	Planet Gear A	3
55	C20S-447	Rotor Gear	1
56C	C30S-448	Rear Cover	1

Index No.	Part No.	Description	Q'ty
57	00-2332	Ball Bearing (608ZZ)	1
58	00-3328	Spring Pin (Ø2 x 4L)	1
59B	B20S-301	Front Plate	1
60	00-41177	O-Ring (Ø25,12 x Ø1,78)	1
61	00-3430	Pin (Ø2 x 8L)	1
62	C30S-302	Cylinder	1
63	00-3447	Pin (Ø2 x 12L)	1
64B	CS30S-303A-B	Rotor A	1
65	B30S-304	Rotor Blade	5
66	C30S-305	Rear Plate	1
67	00-2355	Ball Bearing (625Z)	1
60	00-41177	O-Ring (Ø25,12 x Ø1,78)	1
68	B30SL-314	Valve Stem	1
69	C30SL-525	Washer	1
70	CS30SL-527	Piston	1
71	C20SL-526	Guide Ring	1
72	00-3805	Steel Ball (1/8")	1
73	305F-034	Spring	1
74	00-0606	Screw (M6 x 6L)	1
75	C30SL-502	Reverse Valve	1
76	00-41117	O-Ring (Ø15 x Ø1,5)	1
77	CS30SL-514	Shut Block	1
78	CS20SL-515	Spring	1
79	C30SL-533	Washer	1
80	00-41217	O-Ring (Ø16 x Ø1)	1
81	B20S-103	Housing Rubber	1
82	B30SL-101	Motor Housing	1
83	I40S-509	Bushing	1
84B	IS40S-510	Pin	1
85	C30S-503	Reverse Knob	1
86	00-0509	Screw (M3 x 16L)	1
87	00-3448	Pin (Ø2,5 x 8L)	1
88	I40S-508	Bushing	1
89	305C-021	Valve Stem	1
90	C30S-515	Spring	1
91	00-41223	O-Ring (Ø31 x Ø1)	1
92	C30SL-601	Muffler	1
93	B30SL-603	Exhaust Deflector	1
94C	C20SL-504	Trigger	1
95	00-3308	Spring Pin (Ø3 x 18L)	1
96	B20S-102	Hanger	1
97	B30S-601A	Muffler	1
98	B30S-601B	Muffler	1
99	B30S-601C	Muffler	1
100	00-41224	O-Ring (Ø38 x Ø1,5)	1
101	B30S-608	Deflector Cap	1
102	B30S-604A	Air Inlet (1/4" PF-19)	1
	B30S-604B	Air Inlet (1/4" PT-19)	
	B30S-604C	Air Inlet (1/4" NPT-19)	
103	00-41111	O-Ring (Ø16 x Ø1,5)	1
104	00-3815	Steel Ball (5/32")	16
105	00-41156	O-Ring (Ø3,5 x Ø1,5)	1
106	00-1304	Screw (M5 x 6L)	1
107C	33239-WRCA-05	Washer	6
108C	00-3477	Pin (Ø0,5 x 3L)	66
109C	BS30R-160-607	Gasket	1