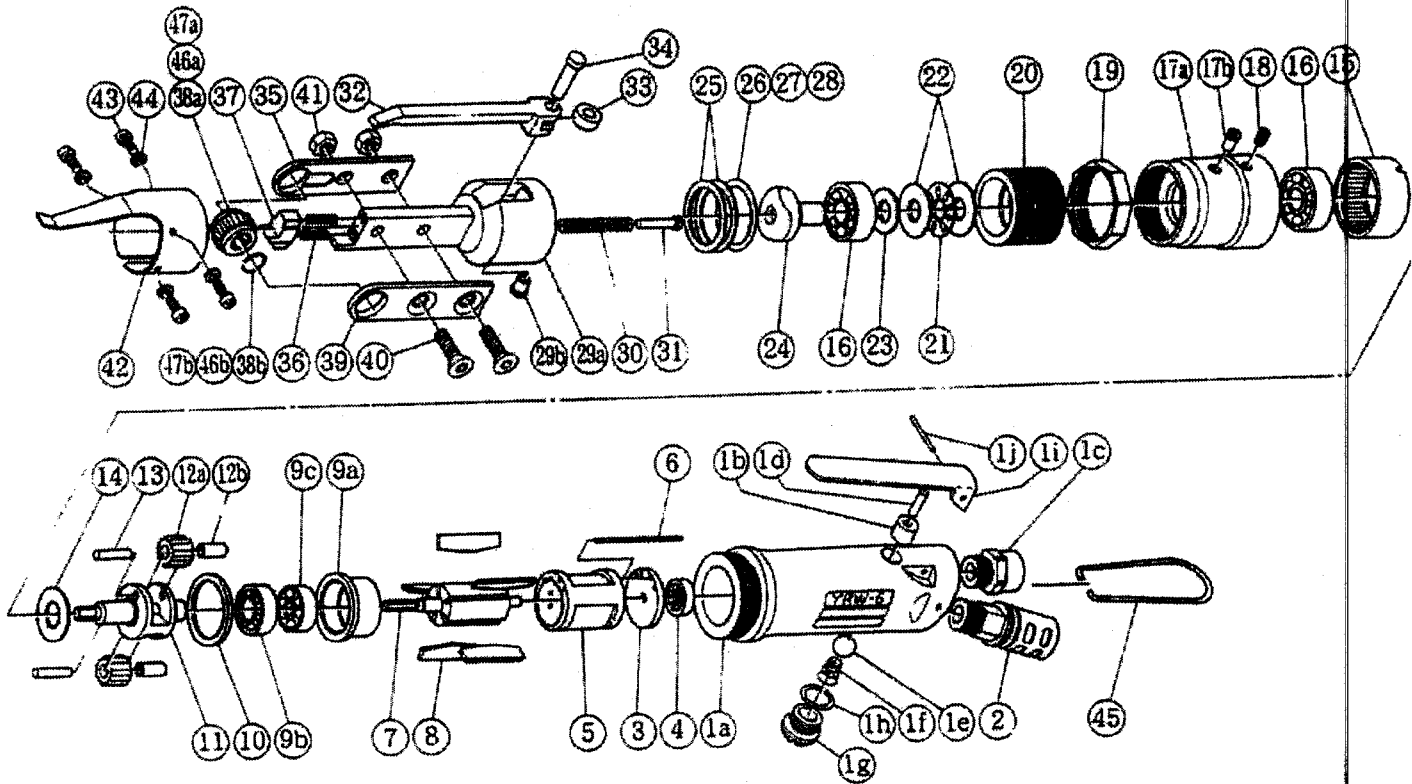


# RATCHET WRENCH

MODEL (YES. NO.)	TOOL NO.
YRW - 6 (00)	4031 0000 00 00

## EXPLODED VIEW



# RATCHET WRENCH

MODEL (YES.NO.)	TOOL NO.
YRW - 6 (00)	4031 0000 00 00

## PARTS LIST

No.	Name of Parts	Per Set	Parts No.	No.	Name of Parts	Per Set	Parts No.
1	Motor Case Assy.	1set	4031 0011 00 99	25	Washer (26 × 31 × 1)	2	8040 1134 00 00
	(a) Motor Case	1	4031 0011 00 00	26	Washer (26 × 31 × 0.1)	1	8040 1135 00 00
	(b) Throttle Bushing	1	4030 0104 00 00	27	Washer (26 × 31 × 0.2)	1	8040 1142 00 00
	(c) Hose Joint	1	0094 0113 00 00	28	Washer (26 × 31 × 0.3)	1	8040 1143 00 00
	(d) Pin (4 × 21AA)	1	8051 3089 00 00	29	Crank Case Assy.	1set	4031 0777 00 99
	(e) Ball (3/8)	1	9150 4005 00 00		(a) Crank Case	1	※ ↑
	(f) Conical Spring (7.5 × 8.5 × 20)	1	8020 3059 00 00		(b) Ball Cup (1/4)	1	9680 1002 00 00
	Throttle Cap Assy.	1set	0004 0107 00 99	30	Spring (5.8 × 40)	1	8020 1269 00 00
	(g) Throttle Cap	1	※ ↑	31	Spring Guide	1	4030 0510 00 00
	(h) "O"Ring (P.11)	1	9010 1010 00 00	32	Latch	1	4031 1162 00 00
	(i) Throttle Lever	1	2104 0110 00 00	33	Cam Roller	1	4021 1115 00 00
(j) Spring Roll Pin (3 × 24)	1	9250 1108 00 00	34	Cam Roller Shaft	1	4021 1117 00 00	
2	Silencer Assy.	1set	0943 0053 01 99	35	Side Plate A (R)	1	4031 1159 00 01
3	Upper Plate	1	4031 0303 00 00	36	Spring (3.6 × 13)	2	8020 1270 00 00
4	Ball Bearing (# 634)	1	9100 1010 00 00	37	Stopper	1	4031 0314 00 00
5	Cylinder	1	4031 0304 00 00	38	Chuck Gear H10 Assy.	1set	4031 0712 00 99
6	Pin (1.8 × 44)	1	8051 1289 00 00		(a) Chuck Gear H10		※ ↑
7	Rotor	1	4031 0305 00 00		(b) Retaining Ring (10.6 × 0.8)		8030 1065 00 00
8	Vane	5	4031 0306 00 00	39	Side Plate B (L)	1	4031 1160 00 02
9	Lower Plate Assy.	1set	4031 0307 00 99	40	Flat Head Socket Bolt (M6 × 18)	2	9490 0007 00 00
	(a) Lower Plate	1	4031 0307 00 00	41	U Nut (M6)	2	9560 2003 00 00
	(b) Ball Bearing (# 626)	1	9100 1007 00 00	42	Latch Spring	1	4031 1161 00 00
	(c) Ball Bearing (# EE - 3)	1	9100 6002 00 00	43	Screw (M4 × 8)	4	9410 2004 00 00
10	Washer (26 × 31.5 × 2)	1	8040 1132 00 00	44	Spring Washer (M4)	4	9200 3004 00 00
11	Main Shaft	1	4031 0614 00 00	45	Hanger	1	0007 0017 00 00
12	Planet Gear Assy.	2set	4031 0607 00 99	Option Parts			
	(a) Planet Gear	1	※ ↑	46	Chuck Gear H8 Assy.	1set	4031 0712 01 99
	(b) Dry Bearing (MB0408DU)	1	9140 0007 00 00		(a) Chuck Gear H8	1	※ ↑
13	Pin (4 × 13.8)	2	8051 1290 00 00	(b) Retaining Ring (8.6 × 0.8)	1	8030 1069 00 00	
14	ST - Packing (12.5 × 24 × 0.4)	1	8011 1065 00 00	47	Chuck Gear H9 Assy.	1set	4031 0712 02 99
15	Internal Gear	1	4031 0605 00 00		(a) Chuck Gear H9	1	※ ↑
16	Ball Bearing (# 6000)	2	9100 1015 00 00	(b) Retaining Ring (9.6 × 0.8)	1	8030 1070 00 00	
17	Gear Case Assy.	1set	4031 0603 00 99				
	(a) Gear Case	1	※ ↑				
	(b) Ball Cup (3/16)	1	9680 1003 00 00				
18	Screw (M5 × 5)	1	9480 1012 00 00				
19	Lock Nut	1	4031 0819 00 00				
20	Crank Case Joint	1	4031 1192 00 00				
21	Thrust Bearing (FN1A - 1024)	1	9110 0012 00 00				
22	Thrust Gauge (FTRA - 1024)	2	9110 0013 00 00				
23	Washer (10 × 20 × 1)	1	8040 1133 00 00				
24	Cam	1	4031 0707 00 00				

The part marked "※" can not be supplied individually. So please order it as a unit of assembly shown by arrow mark (↑).