

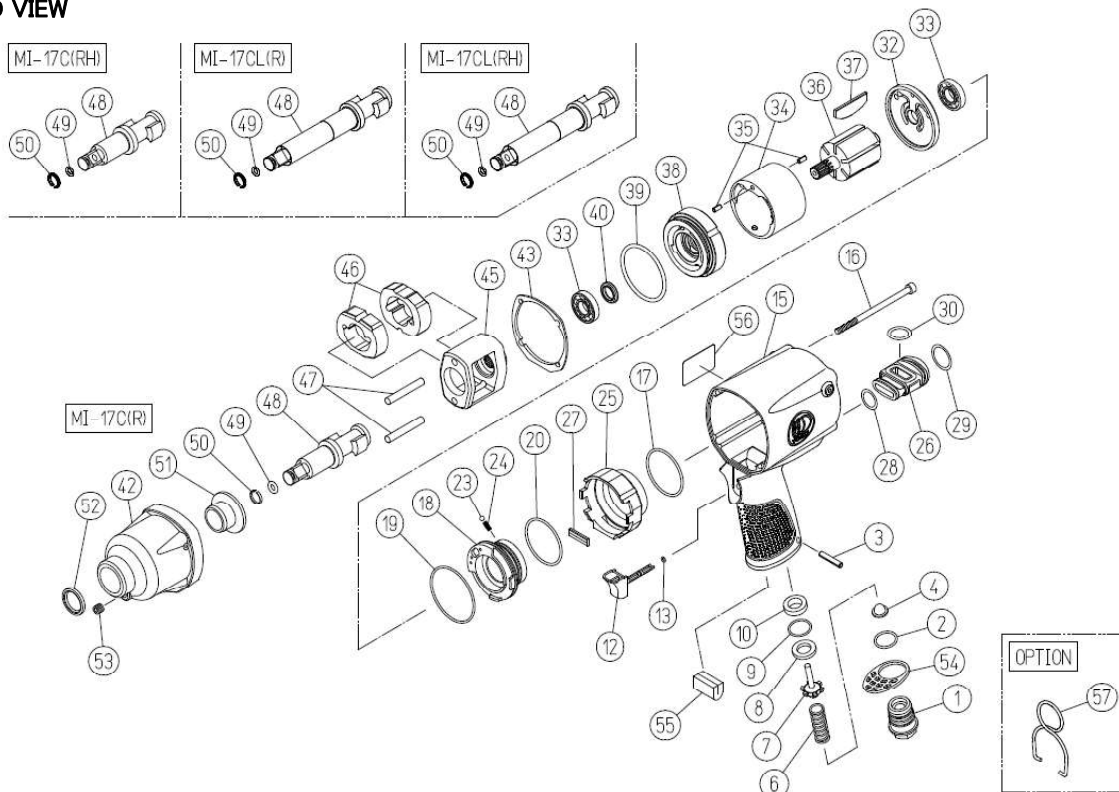
MAINTENANCE INSTRUCTIONS

1/2" IMPACT WRENCH

MODEL MI-17C



EXPLODED VIEW



PARTS LIST

Symbol No.	Parts No.	Description	Q'ty Req'd
MI-17C(R)			
1	43-19-81-840	Air Inlet (PT)	1
2	13-11-01-016	O Ring (P-16)	1
3	13-06-04-020	Spring Pin (4X20)	1
4	13-68-03-049	Air Screen	1
6	13-08-03-181	Throttle Valve Spring	1
7	43-13-94-080	Throttle Valve	1
8	13-68-04-207	Throttle Valve Seat	1
9	13-11-03-015	O Ring (S-18)	1
10	43-13-95-D80	Throttle Valve Spacer	1
12	13-67-03-075	Trigger	1
13	13-11-03-997	O Ring (SS-3.5)	1
15	43-19-81-010	Motor Housing	1
16	13-17-05-095	Hex Socket Head Cap Screw M5X95	4
17	13-11-17-032	O Ring (AS568-032)	1
18	43-19-81-210	Reverse Valve	1
19	13-11-17-032	O Ring (AS568-032)	1
20	13-11-54-138	O Ring (S-38 Teflon)	1
23	13-05-02-008	Steel Ball 1/8	1
24	13-08-03-203	Spring 3.6X8(0,5)	1
25	43-19-81-710	Rear Cover	1
26	43-19-81-J80	Pipe	1
27	43-19-81-J90	Stopper	1
28	13-11-11-115	O Ring (JASO-1015)	1
29	13-11-17-018	O Ring (AS568-018)	1
30	13-11-17-114	O Ring (AS568-114)	1
32	43-19-81-370	Rear End Plate	1
33	13-01-20-004	Bearing EE-4	2
34	43-19-81-360	Liner	1
35	13-06-03-006	Spring Pin 3X6	2
36	43-19-81-390	Rotor	1

Symbol No.	Parts No.	Description	Q'ty Req'd
37	13-71-07-022	Vane	6
38	43-19-81-380	Front End Plate	1
39	13-11-02-006	O Ring (G-50)	1
40	13-12-10-003	Oil Seal (AF-0437HI)	1
42	43-19-81-400	Clutch Housing	1
43	13-61-04-167	Rubber Packing	1
45	43-19-81-440	Hammer Frame	1
46	43-18-01-450	Hammer	2
47	43-18-70-460	Hammer Pin	2
48	43-19-85-500	Anvil Shank (R)	1
49	13-11-05-006	O Ring (6227-6)	1
50	13-08-05-006	Socket Retainer	1
51	43-19-81-490	Shank Bushing	1
52	13-12-02-023	Oil Seal (VB-19.05X25.4X3.2)	1
53	13-49-03-016	GDL Pulg (NPTF 1/16)	1
54	13-74-03-030	Exhaust Deflector	1
55	13-74-03-031	Silencer	1
56	13-73-05-193	Name Plate	1
43-19-81-40C	Clutch Housing CP (Incl. Symbol No. 42, 51, 52)		(1CP)
43-19-85-50C	Anvil Shank (R) CP (Incl. Symbol No. 48, 49, 50)		(1CP)
43-19-81-90C	Anvil Shank (RH) CP (Incl. Symbol No. 48, 49, 50)		(1CP)
Option Parts			
57	13-08-09-054	Hanger	1
MI-17CL(R)			
48	43-18-71-500	Anvil Shank L (R)	1
43-18-71-50C	Anvil Shank L (R) CP (Incl. Symbol No. 48, 49, 50)		(1CP)
43-19-82-90C	Anvil Shank L (RH) CP (Incl. Symbol No. 48, 49, 50)		(1CP)
NPT Screw Version			
1	43-19-81-850	Air Inlet (NPT)	(1)