

※	Sym No.	Code No.	Description	Q'ty Req
	001	426205010	MAIN SPOOL	1
	002	426205780	VALVE BUSH	1
	003	426205870	SHUTTLE	1
	004	426205830	VALVE SEAT R	1
	005	426205840	VALVE SEAT L	1
※	006	426205061	VALVE BODY	1
	007	426205080	SIDE COVER	2
	008	426205850	VALVE PIN	1
	009	426205140	LIMIT LEVER	1
	010	426205100	LIMIT GUIDE	1
	011	426205460	LIMIT SHAFT	1
	012	426205110	CHAIN LEVER	1
	013	426205860	STOPPER	1
	014	426205470	UNDER COVER	1
	015	426205810	EXHAUST PLATE	1
	016	136102151	VALVE PACKING	1
	017	136102153	UNDER PACKING	1
	018	137402022	SILENCER S	4
	019	137402021	SILENCER F	1
※	020	130802208	VALVE SPRING	1
	021	136406025	BUMPER	2
	022	426205880	PROTECTOR	1
	023	131117004	O-RING AS568-004	2
	024	131103003	O-RING S-5	2
	025	131103014	O-RING S-16	4
	026	131103016	O-RING S-20	2
	027	131704030	HEX SOCKET HEAD CAP SCREW M4X30	1
	028	131704035	HEX SOCKET HEAD CAP SCREW M4X35	2
	029	131905008	HEX SOCKET BOTTON SCREW M5X8	2
	030	131904008	HEX SOCKET BOTTON SCREW M4X8	1
	031	132804010	HEX FLAT HEAD MACHINE SCREW M4X10	6
	032	132110008	HEX SOCKET SET SCREW M10X8	2
	033	132104005	HEX SOCKET SET SCREW M4X5	3
※	034	134902003	HEX SOCKET PIPE PLUG 1/8	1
	035	131309008	WASHER M8	1
	036	131309005	WASHER M5	1
	037	130301022	RETAINING RING H-22	2
	038	130790008	SNAP PIN 8	1
	039	130406017	PARALLEL PIN 3X7.5	3
	040	130602112	SPRING PIN 2.5X12	1
	041	134703050	INLET BUSHING (W./SCREEN)	1
	050	426205790	MOTOR CASE	1
	051	426205180	REAR PLATE	1
	052	426205160	CYLINDER	1
	053	426205150	ROTOR	1
	054	426205170	FRONT PLATE	1
	055	137102018	VANE	6
	056	130402049	KNOCK PIN	1
	057	130113003	BEARING 6901	2
	058	131103044	O-RING S-63	1
	059	131705014	HEX SOCKET HEAD CAP SCREW M5X14	3
	060	130302012	RETAINING RING S-12	1
	070	426205410	BRAKE COVER	1
	071	426205400	BRAKE PISTON	1
	072	426205430	BRAKE DISK	1
	073	130408079	KEY	1
	074	130802207	SPRING 12X13.8X1.6	6
	075	131103047	O-RING S-70	1
	076	131103042	O-RING S-56	1
	077	131705030	HEX SOCKET HEAD CAP SCREW M5X30	2
	078	132104005	HEX SOCKET SET SCREW M4X5	1
	090	426205210	WHEEL HOUSING	1
	091	426205350	CHAIN GUIDE	1
	092	136610025	CHAIN SEPARATOR	1

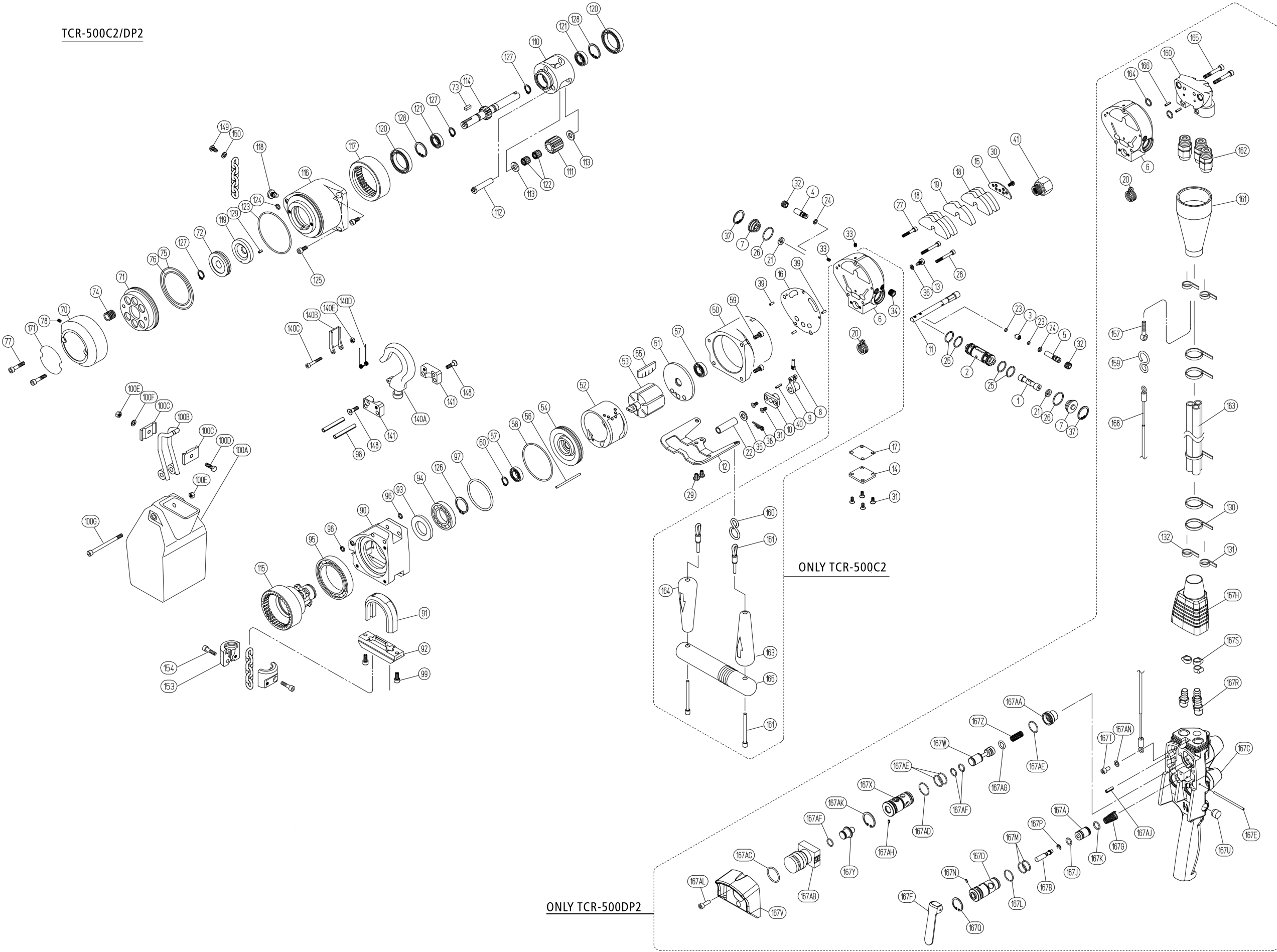
※	Sym No.	Code No.	Description	Q'ty Req
	093	426205230	SPACER	1
	094	130116005	BEARING 16005	1
	095	130113010	BEARING 6910	1
	096	131103004	O-RING S-6	2
	097	131102006	O-RING G-50	1
	098	130606045	SPRING PIN 6X45	2
	099	131705014	HEX SOCKET HEAD CAP SCREW M5X14	2
	100	42621592C	CHAIN BASKET CP	0
	A	139003026	CHAIN BASKET	1
	B	426205920	BUCKET ARM	1
	C	426205820	ARM HOLDER	2
	D	131605016	HEX HEAD SCREW M5X16	1
	E	134501005	U-NUT M5	2
	F	131307005	WASHER M5	1
	G	131705070	HEX SOCKET HEAD CAP SCREW M5X70	1
	101	138040033	LINK CHAIN 4XP12X3.3	0
	110	426205240	CAGE	1
	111	426205250	STAR GEAR	3
	112	426205260	PIN	3
	113	426205270	THRUST COLLAR	6
	114	426205290	PINION	1
	115	426205300	WHEEL	1
	116	426205310	GEAR CASE	1
	117	426205320	RING GEAR	1
	118	426205890	LOCK SCREW	1
	119	426205900	BRAKE PLATE	1
	120	130112806	BEARING 6806	2
	121	130113003	BEARING 6901	2
	122	130170013	NEEDLE BEARING KT-81211	6
	123	131103047	O-RING S-70	1
	124	131103004	O-RING S-6	1
	125	131705014	HEX SOCKET HEAD CAP SCREW M5X14	3
	126	130302025	RETAINING RING S-25	1
	127	130302012	RETAINING RING S-12	3
	128	130301024	RETAINING RING H-24	2
	129	130603006	SPRING PIN 3X6	1
	140	420810PAP	HOOK (W./CLAW)	1
	A	420810PE1	HOOK	1
	B	420645L30	HOOK SAFETY CLAW	1
	C	131704028	HEX SOCKET HEAD CAP SCREW M4X28	1
	D	130802046	HOOK SPRING	1
	E	134501004	U-NUT M4	1
	141	426205570	HOOK END PIECE	1
	148	132805018	HEX FLAT HEAD MACHINE SCREW M5X18	2
	149	131905010	HEX SOCKET BOTTON M5X10	1
	150	131305005	WASHER M5	1
	152	131301006	SPRING WASHER M6	2
	153	426215B30	HANGER	2
	154	131705020	HEX SOCKET HEAD CAP SCREW M5X20	2
※	160	130802081	S-TYPE WIRE	2
※	161	138001015	CHANGE CORD (1.5M)	2
※	163	136602625	GRIP W	1

※	Sym No.	Code No.	Description	Q'ty Req
※	164	136602626	GRIP R	1
※	165	136602627	HANDLE	1
	171	137309270	NAME PLATE	1

TCR-500DP2

	006	426206060	VALVE BODY	1
	020	130802209	VALVE SPRING	1
	130	137502038	BAND 150 RED	5
	131	137502036	BAND 100 WHITE	2
	132	137502037	BAND 100 BLACK	2
	157	131756030	HINGE SCREW M6X30	1
	159	130802081	S-TYPE WIRE	1
	160	426206941	MANIFOLD BLOCK	1
	161	136608250	BOOT	1
	162	137291310	TUBE FITTING HB-8A PT	3
	163	137240927	URETHANE HOSE HR-8R 2M	3
	164	131103008	O-RING S-10	2
	165	131705035	HEX SOCKET HEAD CAP SCREW M5X35	2
	166	130603010	SPRING PIN 3X10	2
	167	420232VRC	PENDANT VALVE ASSY	1
	A	420215VB0	THROTTLE VALVE	2
	B	420215VC0	PUSH ROD	2
	C	420232VR0	VALVE BODY	1
	D	420232VF0	BUSHING	2
	E	130402055	LEVER PIN	1
	F	420218VH0	VALVE LEVER	2
	G	130802030	VALVE SPRING	2
	H	136608255	BOOT	1
	J	131118012	O-RING AS568-012(HS90°)	2
	K	131117013	O-RING AS568-013	2
	L	131103015	O-RING S-18	2
	M	131103014	O-RING S-16	4
	N	130602005	SPRING PIN 2X5	2
	P	130303004	RETAINING RING E-4	2
	Q	130301022	RETAINING RING H-22	2
	R	420232E80	HOSE NIPPLE S	3
	S	137501012	HOSE BAND (5.6-16)	3
	T	131705010	HEX SOCKET HEAD CAP SCREW M5X10	1
	U	431765761	PLUG	2
	V	420232V70	EMERGENCY PANEL	1
	W	420227V60	EMERGENCY VALVE	1
	X	420232V50	EMERGENCY BUSHING	1
	Y	420232V00	EMERGENCY PUSH ROD	1
	Z	130802097	EMERGENCY SPRING	1
	AA	420232V10	EMERGENCY CAP	1
	AB	136690401	EMERGENCY SWITCH	1
	AC	131103019	O-RING S-24	1
	AD	131103016	O-RING S-20	1
	AE	131103015	O-RING S-18	3
	AF	131103009	O-RING S-11.2	3
	AG	131117110	O-RING AS568-110	1
	AH	130602005	SPRING PIN 2X5	1
	AJ	130604015	SPRING PIN 4X15	2
	AK	130301025	RETAINING RING H-25	1
	AL	131705016	HEX SOCKET HEAD CAP SCREW M5X16	2
	AN	131307005	WASHER M5	1
	168	426230F1B	PENDANT WIRE 2M CP	1

※ mark : C TYPE ONLY

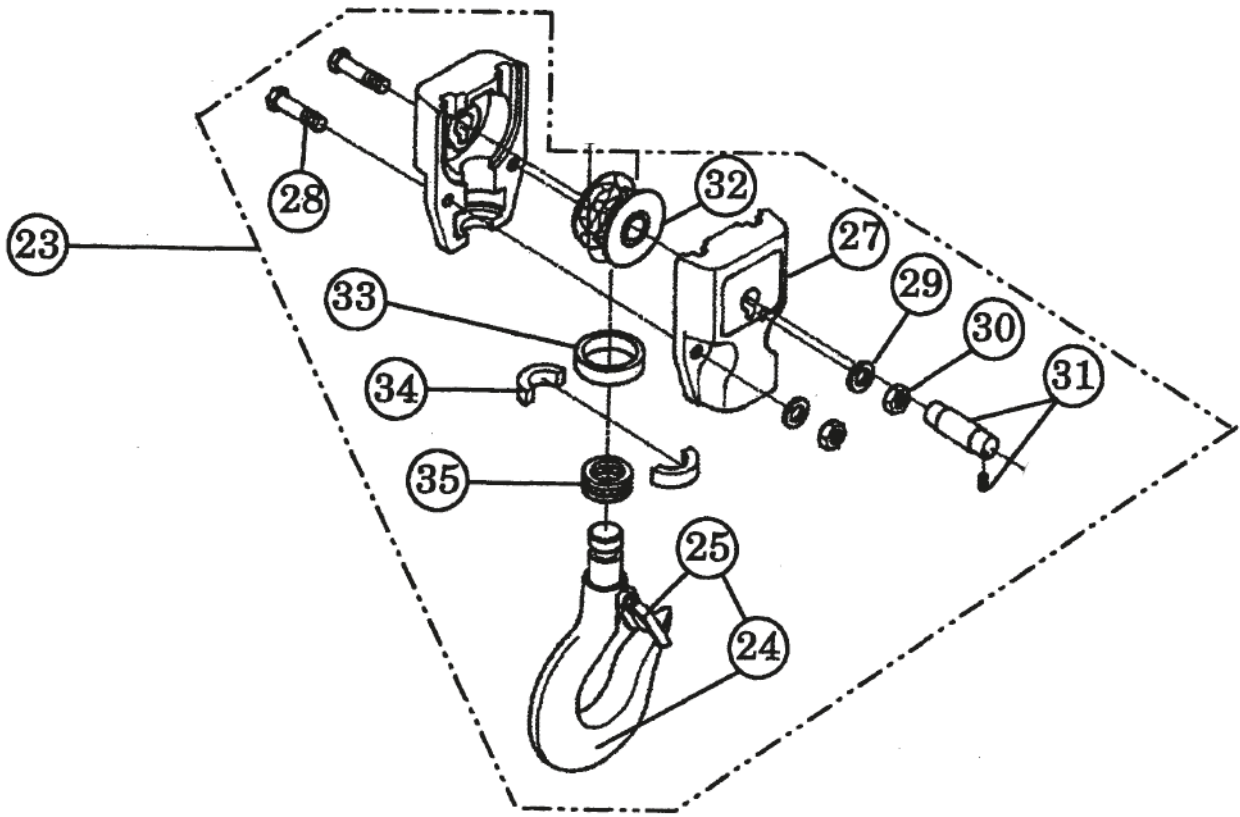


ONLY TCR-500C2

ONLY TCR-500DP2

42-62-05-95C (COMPLETE SET)

BOTTOM HOOK



Index No	Part No.	Description	Nos. per hoist
23	42-62-05-95C	Bottom hook complete set	1
24	E3HX0024A	Bottom hook assembly	1
25	E3HX0025B	Hook latch assembly	1
27	E3HX0027D	Bottom yoke	2
28	E3HX0028E	Bolt	2
29	E3HX0029F	Spring lock washer	2
30	E3HX0030G	Nut	2
31	E3HX0031H	Bottom shaft assembly	1
32	E3HX0032I	Idle sheave assembly	1
33	E3HX0033J	Thrust collar A	1
34	E3HX0034K	Hook stopper	2
35	E3HX0035L	Thrust bearing	1
36	LP20070017	Name plate C	1